



05122
P13 SE MED
HWY 4 & LONE TREE FSU

5705 LONE TREE WAY
 ANTIOCH, CA 94531



SHEET INDEX			
SHEET NUMBER	SHEET NAME	ISSUED FOR BID	ISSUED FOR CONSTRUCTION
0.000	COVER SHEET		
A.100	SITE PLAN		
A.105	REFUSE ENCLOSURE		
A.104	DESERV POINT CANOPY		
A.106	OUTSIDE MEAL DELIVERY CANOPY		
A.201	FLOOR PLAN		
A.301	EXTERIOR ELEVATIONS (COLOR)		
A.304	EXTERIOR ELEVATIONS		
A.302	EXTERIOR PERSPECTIVES		
C1.2	COVER SHEET		
C2.0	COMPREHENSIVE SITE PLAN		
C01	PRELIMINARY SITE PLAN		
C2.2	DRIVE THRU QUELINDS PLAN		
C2.3	DRIVE THRU LANE TURNING PLAN		
C2.4	DRIVE THRU LANE TURNING PLAN		
C2.5	PRELIMINARY SIGNING AND STRIPING PLAN		
C2.6	PRELIMINARY SIGNING AND STRIPING DETAILS		
C3.0	PRELIMINARY GRADING AND DRAINAGE PLAN		
C3.1	PRELIMINARY GRADING AND DRAINAGE PLAN		
C3.2	GRADING ENLARGEMENTS		
C3.3	ENGINEERED CROSS SECTIONS		
C3.4	TRUE CROSS SECTIONS		
C4.0	PRELIMINARY UTILITY PLAN		
C5.0	PRELIMINARY STORMWATER CONTROL PLAN		
C6.0	PRELIMINARY LIGHTING PLAN		
E6.0	PHOTOMETRICS		
L.1	PRELIMINARY LANDSCAPE PLAN		
L.1.1	PRELIMINARY WATER CONSERVATION PLAN		



Chick-fil-A
 5200 Buffington Road
 Atlanta, Georgia
 30349-2998

WARE MALCOMB
 Leading Design for Commercial Real Estate

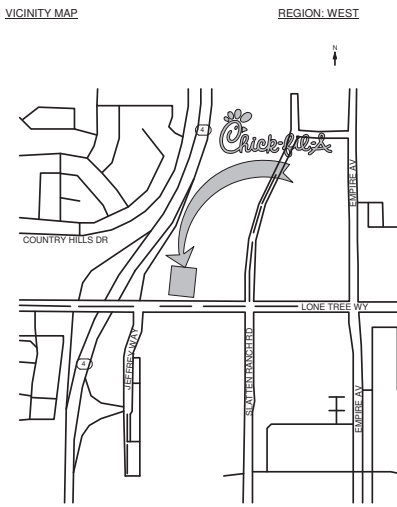
2777 E. Camelback Rd, Suite #325
 PHOENIX, AZ, 85016
 P 480.767.1001

CHICK-FIL-A
HWY 4 & LONE TREE FSU
 5705 LONE TREE WAY
 ANTIOCH, CA 94531

FSR#05122
 BUILDING TYPE (SIZE): P13 SE MED
 RELEASE: 21.11
 PRINTED FOR:
 ENTITLEMENT PACKAGE
 REVISION SCHEDULE
 NO. DATE DESCRIPTION

ENTITLEMENT PACKAGE
 SHEET NUMBER
 CONSULTANT PROJECT # PH022-0188-00
 DATE: 09/20/2024
 DRAWN BY: J.S.A.
 Checked and confirmed on this drawing and all digital files
 attached to this drawing package are correct and approved as
 intended. All other information is for informational purposes
 only. © 2024 WARE MALCOMB, INC. All rights reserved.
 COVER SHEET

G-000

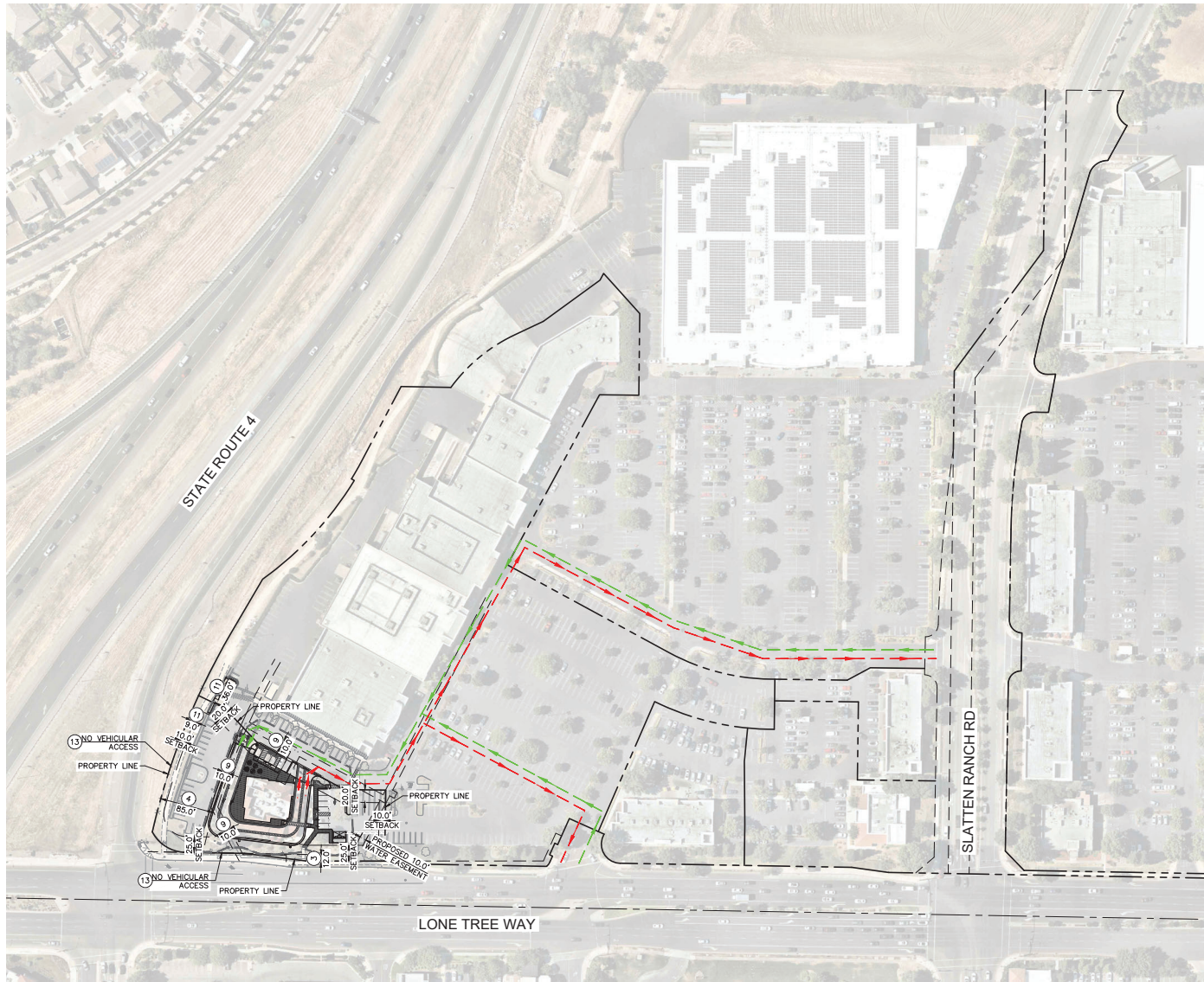


ARCHITECT
 2777 E. Camelback RD,
 Suite #352
 PHOENIX, AZ, 85016
 P. 480.767.1001
 Josh Dickson
 jdickson@waremalcomb.com

ELECTRICAL
 310 W. 20th St Ste 100
 KANSAS CITY, MO, 64108
 P. 816.997.9575
 Bo Osborn
 bo.osborn@dialecticeng.com

CIVIL
 4637 Chabot Drive, Ste 350
 Pleasanton, CA 94588
 P. 669.800.4168
 Jennifer Kirby, P.E.
 jennifer.kirby@kimley-horn.com

15 MAY 2022 10:58 AM (GMT-07:00) C:\Users\jcm\OneDrive\Documents\2022\03\CHICK-FIL-A\CHICK-FIL-A-COMPREHENSIVE SITE PLAN.dwg
 This document, together with the drawings and reports prepared hereon, is the property of Kimley-Horn and Associates, Inc. and shall remain the property of Kimley-Horn and Associates, Inc. without liability to Kimley-Horn and Associates, Inc.



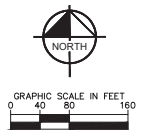
VICINITY MAP
N.T.S.

LEGEND

- PROPERTY LINE
- - - - - RIGHT OF WAY LINE
- - - - - APPROXIMATE CIVIL LIMIT OF WORK LINE
- - - - - EASEMENT LINE
- - - - - SETBACK LINE
- → → SITE CIRCULATION ACCESS FROM LONE TREE WAY AND SLATTEN RANCH ROAD

EASEMENT NOTES

- ③ AN EASEMENT FOR IRRIGATION DITCH, MAINTENANCE, INGRESS AND EGRESS AND INCIDENTAL PURPOSES, RECORDED MARCH 23, 1926 AS BOOK 32 PAGE 30 OF OFFICIAL RECORDS.
IN FAVOR OF: J. C. LLOYD
AS DESCRIBED THEREIN
- ④ AN EASEMENT FOR WATER PIPE LINE AND INCIDENTAL PURPOSES, RECORDED JULY 17, 1995 AS INSTRUMENT NO. 95-112548 AND SEPTEMBER 11, 1995 AS INSTRUMENT NO. 95-151436, BOTH OF OFFICIAL RECORDS.
IN FAVOR OF: CONTRA COSTA WATER DISTRICT
AS DESCRIBED THEREIN
- ⑨ AN EASEMENT FOR WATER LINE AND INCIDENTAL PURPOSES, RECORDED NOVEMBER 20, 2003 AS INSTRUMENT NO. 2003-567104 OF OFFICIAL RECORDS.
IN FAVOR OF: THE CITY OF ANTIOCH
AS DESCRIBED THEREIN
- ⑩ AN EASEMENT FOR PUBLIC UTILITY PURPOSES AND INCIDENTAL PURPOSES, RECORDED NOVEMBER 20, 2003 AS INSTRUMENT NO. 2003-567117 OF OFFICIAL RECORDS.
IN FAVOR OF: THE CITY OF ANTIOCH
AS DESCRIBED THEREIN
- ⑪ AN EASEMENT FOR PEDESTRIANS AND ACCESS AND INCIDENTAL PURPOSES, RECORDED NOVEMBER 20, 2003 AS INSTRUMENT NO. 2003-567121 OF OFFICIAL RECORDS.
IN FAVOR OF: THE CITY OF ANTIOCH
AS DESCRIBED THEREIN
- ⑬ ABUTTER'S RIGHTS OF INGRESS AND EGRESS TO OR FROM FREEWAY HAVE BEEN REINQUISHED IN THE DOCUMENT RECORDED FEBRUARY 06, 2006 AS INSTRUMENT NO. 2006-38566 OF OFFICIAL RECORDS.



No.	REVISIONS	DATE	BY

Kimley-Horn
 4637 CHADOT DRIVE, SUITE 200, PLEASANTON, CA 94686
 PHONE: 925-255-3950-3955-4849
 WWW.KIMLEY-HORN.COM



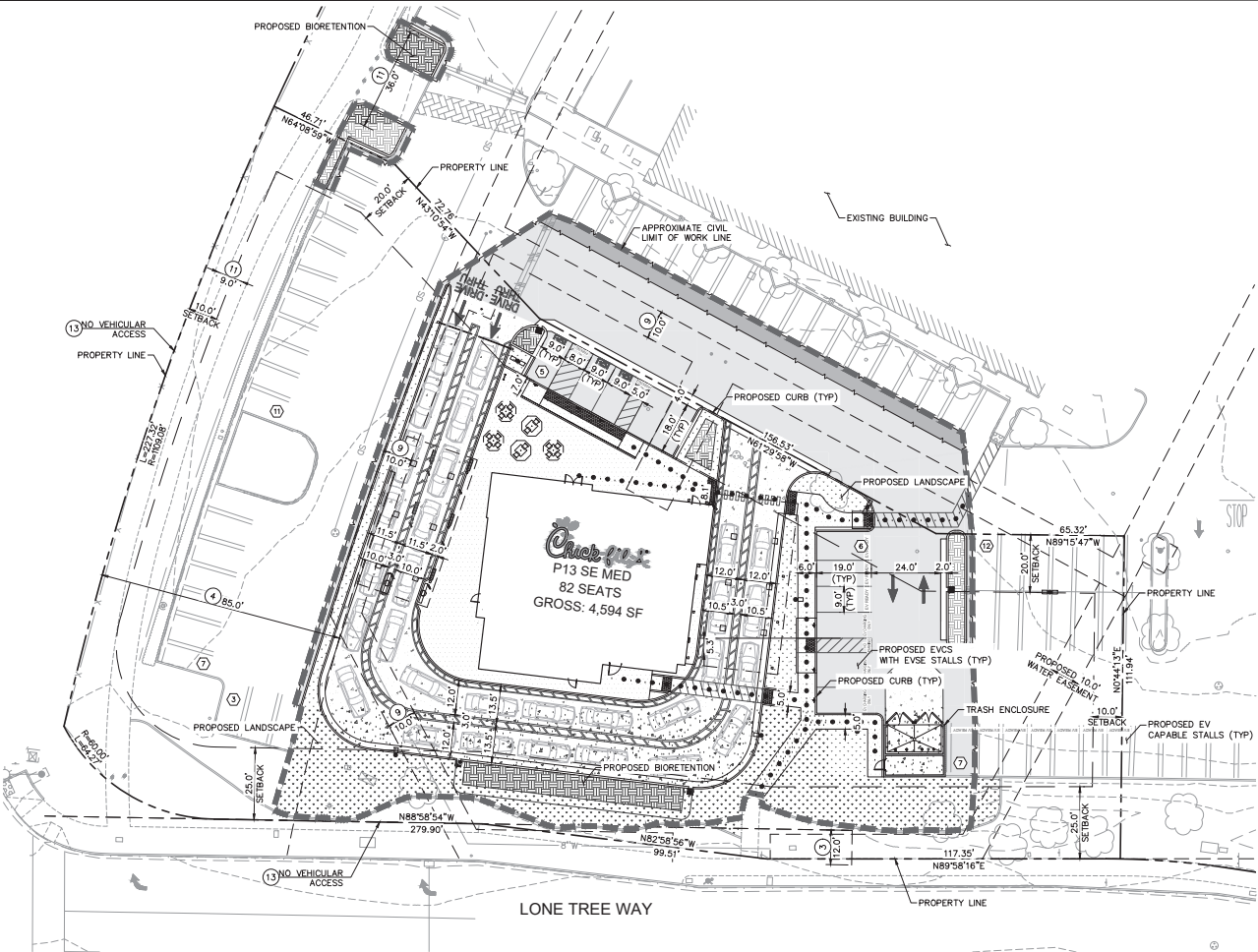
KHA PROJECT	DATE	DESIGNED BY	CHECKED BY
CHICK-FIL-A	09/27/2022	SAL	JMK
5705 LONE TREE WAY	SCALE AS SHOWN	DRAWN BY	
ANTIOCH, CA 94531			

CHICK-FIL-A
 5705 LONE TREE WAY
 ANTIOCH, CA 94531

CHICK-FIL-A
 5705 LONE TREE WAY
 ANTIOCH, CA 94531

COMPREHENSIVE
 SITE PLAN
 SHEET NUMBER
 C2.0

KIMLEY-HORN AND ASSOCIATES, INC. 15000 SHILOH ROAD, SUITE 200, FLEMING, CA 94608
 PROJECT NO. 2022-0010 PRELIMINARY SITE PLAN FOR CHICK-FIL-A RESTAURANT AND DRIVE THRU AT THE INTERSECTION OF LONE TREE WAY AND ANTIPOCH ROAD, ANTIPOCH, CA 94501
 DATE: 09/27/2022
 DRAWN BY: SAJ
 CHECKED BY: JAK
 SCALE: AS SHOWN
 SHEET NO. 01 OF 02



LEGEND

- PROPERTY LINE
- - - - - APPROXIMATE CIVIL LIMIT OF WORK LINE
- - - - - EASEMENT LINE
- - - - - SETBACK LINE
- - - - - SAWCUT LINE
- ACCESSIBLE PATH OF TRAVEL (FOR REFERENCE ONLY, DO NOT PAINT)
- ⊗ ROW PARKING COUNT
- ▭ PROPOSED ASPHALT CONCRETE PAVEMENT
- ▭ PROPOSED MILL AND OVERLAY
- ▭ PROPOSED CONCRETE SIDEWALK
- ▭ PROPOSED HEAVY DUTY CONCRETE
- ▭ PROPOSED LANDSCAPE AREA
- ▭ PROPOSED BIORETENTION OR FLOW-THROUGH PLANTER
- ▭ PROPOSED RIPRAP

OVERALL PARKING SUMMARY TABLE

STALL TYPE	*REQUIRED	PROVIDED
STANDARD PARKING STALL (9'x18')	32	48
ADA PARKING	2 (1 VAN)	3 (1 VAN)
TOTAL	34	51

*ONE (1) PARKING SPACE PER 3 SEATS PER TITLE 9, CHAPTER 5, ARTICLE 17, SECTION 9-5.1703.1, TABLE 9-5.1703.117.008, OF CITY OF ANTIOCH MUNICIPAL CODE. > RESTAURANT > 28 SPACES
 PLUS
 OUTDOOR SEATING -- 1 ADDITIONAL SPACE/3 SEATS > 6 SPACES

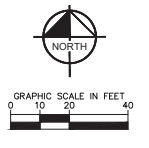
CAL GREEN PARKING REQUIREMENTS

STALL TYPE	REQUIRED	PROVIDED
EV CAPABLE STALLS	13*	13 (10 EV CAPABLE, 3 EVCS WITH EVSE STALLS INSTALLED UPON OCCUPANCY)
EVCS WITH EVSE STANDARD STALLS	3* (1 ADA)	3 (2 ADA)
EVCS WITH EVSE ADA STALLS	1 (1 VAN)	2 (1 VAN, 1 STD)
SHORT TERM BIKE PARKING	2**	2

*REQUIRED NUMBER OF EV CAPABLE STALLS AND EVCS WITH EVSE STALLS ARE CALCULATED PER THE 2022 CALGREEN BUILDING CODE AND ARE BASED ON THE PROVIDED QUANTITIES IN THE OVERALL PARKING SUMMARY TABLE ABOVE.
 **ONE (1) BICYCLE PARKING SPACE PER 50 OFF-STREET VEHICLE PARKING SPACES REQUIRED PER TITLE 9, CHAPTER 5, ARTICLE 17, SECTION 9-5.1707 OF CITY OF ANTIOCH MUNICIPAL CODE. > RESTAURANT > 2 SPACES

EASEMENT NOTES

- 3 AN EASEMENT FOR IRRIGATION DITCH, MAINTENANCE, INGRESS AND EGRESS AND INCIDENTAL PURPOSES, RECORDED MARCH 23, 1926 AS BOOK 32 PAGE 30 OF OFFICIAL RECORDS. IN FAVOR OF: J.C. LLOYD. AFFECTS: AS DESCRIBED THEREIN
- 4 AN EASEMENT FOR WATER PIPE LINE AND INCIDENTAL PURPOSES, RECORDED JULY 17, 1995 AS INSTRUMENT NO. 95-112948 AND SEPTEMBER 11, 1995 AS INSTRUMENT NO. 95-151435, BOTH OF OFFICIAL RECORDS. IN FAVOR OF: CONTRA COSTA WATER DISTRICT. AFFECTS: AS DESCRIBED THEREIN
- 9 AN EASEMENT FOR WATER LINE AND INCIDENTAL PURPOSES, RECORDED NOVEMBER 20, 2003 AS INSTRUMENT NO. 2003-567104 OF OFFICIAL RECORDS. IN FAVOR OF: CITY OF ANTIOCH. AFFECTS: AS DESCRIBED THEREIN
- 10 AN EASEMENT FOR PUBLIC UTILITY PURPOSES AND INCIDENTAL PURPOSES, RECORDED NOVEMBER 20, 2003 AS INSTRUMENT NO. 2003-567117 OF OFFICIAL RECORDS. IN FAVOR OF: THE CITY OF ANTIOCH. AFFECTS: AS DESCRIBED THEREIN
- 11 AN EASEMENT FOR PEDESTRIANS AND ACCESS AND INCIDENTAL PURPOSES, RECORDED NOVEMBER 20, 2003 AS INSTRUMENT NO. 2003-567121 OF OFFICIAL RECORDS. IN FAVOR OF: CITY OF ANTIOCH. AFFECTS: AS DESCRIBED THEREIN
- 13 ABUTTER'S RIGHTS OF INGRESS AND EGRESS TO OR FROM FREEWAY HAVE BEEN RELINQUISHED IN THE DOCUMENT RECORDED FEBRUARY 06, 2006 AS INSTRUMENT NO. 2006-38566 OF OFFICIAL RECORDS.



NO. _____
REVISIONS _____
DATE _____

Kimley-Horn
 4637 CHADOT DRIVE, SUITE 200, FLEMING, CA 94608
 PHONE: 925-796-3963-4849
 WWW.KIMLEY-HORN.COM

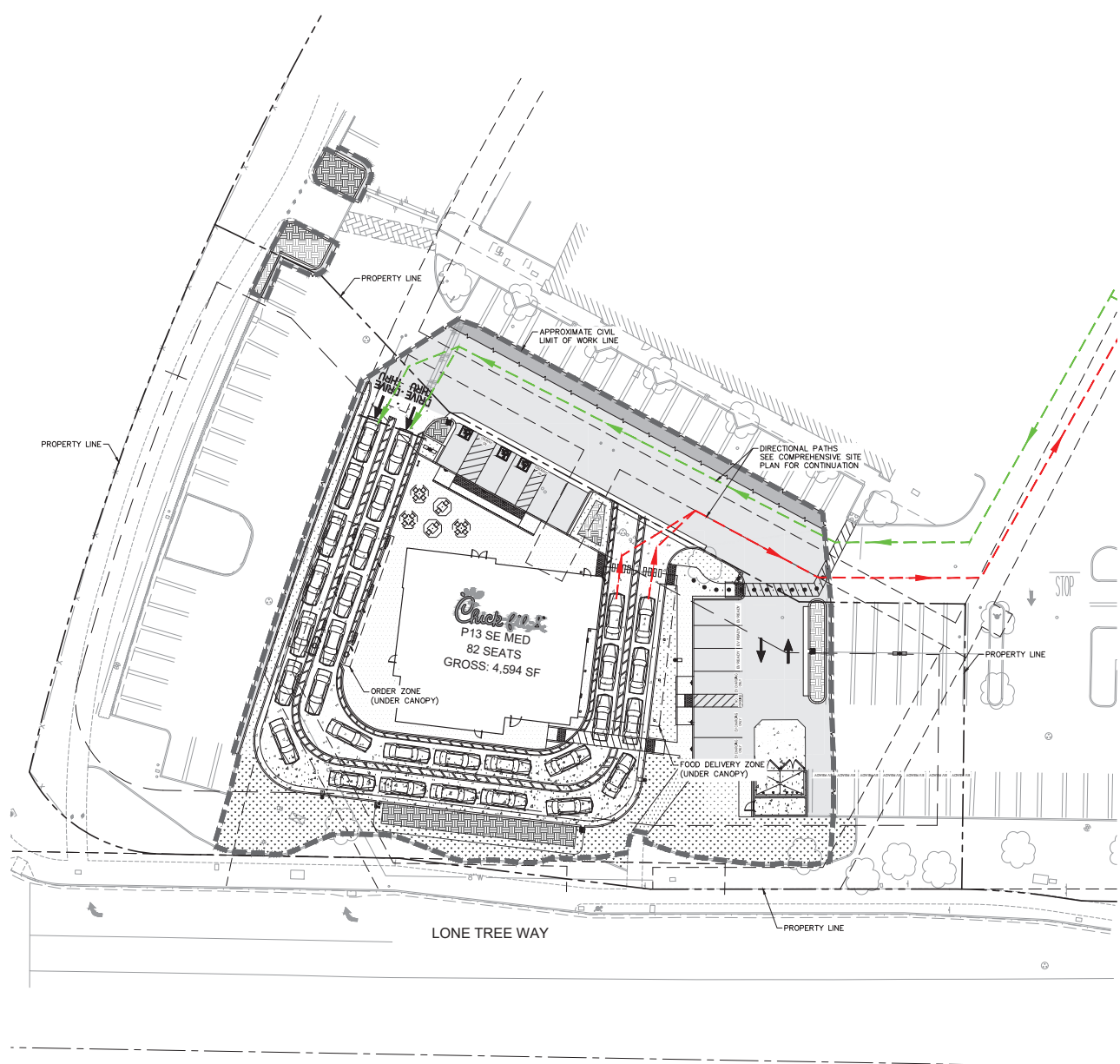
CITY OF ANTIOCH
 CALIFORNIA

CHICK-FIL-A
 5705 LONE TREE WAY
 ANTIPOCH, CA 94531

PRELIMINARY SITE PLAN

SHEET NUMBER
C2.1

KIMLEY-HORN AND ASSOCIATES, INC. 6500 BAYVIEW AVENUE SUITE 200 SAN DIEGO, CA 92121 TEL: 619-592-2222 FAX: 619-592-2223 WWW.KIMLEY-HORN.COM
 THIS DOCUMENT IS THE PROPERTY OF KIMLEY-HORN AND ASSOCIATES, INC. IT IS TO BE USED ONLY FOR THE PROJECT AND SITE SPECIFICALLY IDENTIFIED HEREON. IT IS NOT TO BE REPRODUCED OR TRANSMITTED IN ANY FORM OR BY ANY MEANS, ELECTRONIC OR MECHANICAL, WITHOUT WRITTEN PERMISSION FROM KIMLEY-HORN AND ASSOCIATES, INC.

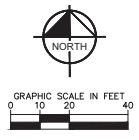



LEGEND

- — — — — PROPERTY LINE
- — — — — APPROXIMATE CIVIL LIMIT OF WORK LINE
- - - - - EASEMENT LINE
- - - - - SETBACK LINE
- - - - - SAWCUT LINE
- [Pattern] PROPOSED ASPHALT CONCRETE PAVEMENT
- [Pattern] PROPOSED MILL AND OVERLAY
- [Pattern] PROPOSED CONCRETE SIDEWALK
- [Pattern] PROPOSED HEAVY DUTY CONCRETE
- [Pattern] PROPOSED LANDSCAPE AREA
- [Pattern] PROPOSED BIORETENTION OR FLOW-THROUGH PLANTER
- [Pattern] PROPOSED RIPRAP

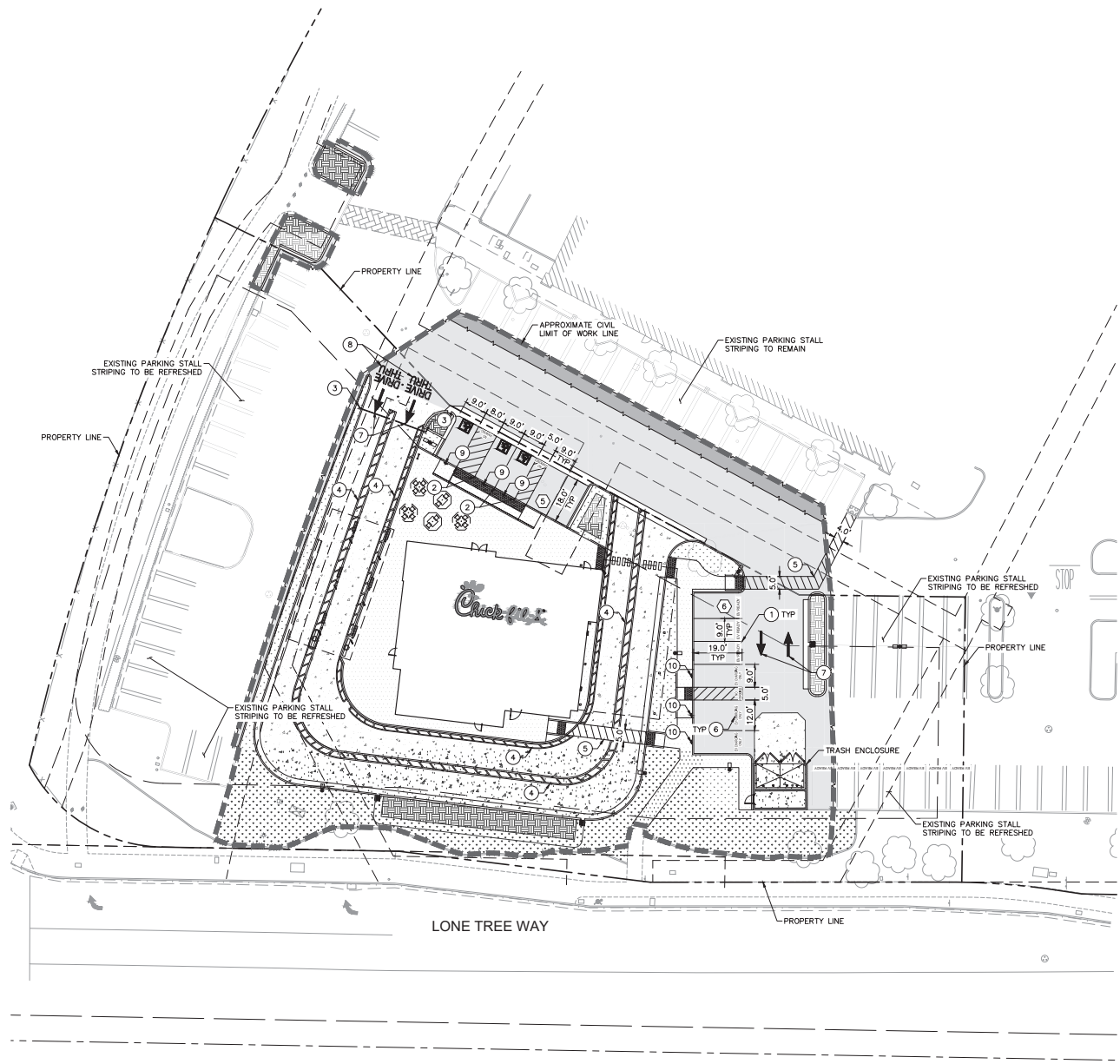
SITE STATISTICS

51 SPACES TOTAL
 PROPOSED PARCEL AREA: 58,147 SF
 30 CAR STACK
 ORDER POINT: 5TH CAR AT INNER LANE



Kimley-Horn	4637 CHADOT DRIVE, SUITE 300, PLEASANTON, CA 94686 PHONE: 925-396-3965 FAX: 925-396-4849 WWW.KIMLEY-HORN.COM			
				
KHA PROJECT: CHICK-FIL-A DATE: 09/27/2022 SCALE: AS SHOWN DESIGNED BY: SAL DRAWN BY: CIC CHECKED BY: JMK	CHICK-FIL-A 5705 LONE TREE WAY ATLANTA, GA 30349			
CHICK-FIL-A 5705 LONE TREE WAY ANTIPOCH, CA 94531		DRIVE THRU QUEUING PLAN		
SHEET NUMBER		C2.2		
No.	REVISIONS	DATE	BY	

KIMLEY-HORN AND ASSOCIATES, INC. 15000 E. WINDY HILLS ROAD, SUITE 200, DENVER, CO 80238
 TEL: 303.751.1000 FAX: 303.751.1001 WWW.KIMLEY-HORN.COM
 PROJECT NO. 2022-0010 PRELIMINARY PLAN NO. 1 OF 1
 DATE: 09/27/2022
 SCALE: AS SHOWN
 DESIGNED BY: SAL
 DRAWN BY: CIC
 CHECKED BY: JMK

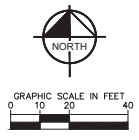


LEGEND

- — — — — PROPERTY LINE
- - - - - APPROXIMATE CIVIL LIMIT OF WORK LINE
- - - - - EASEMENT LINE
- - - - - SETBACK LINE
- - - - - SAWCUT LINE
- - - - - ACCESSIBLE PATH OF TRAVEL (FOR REFERENCE ONLY, DO NOT PAINT)
- ⊗ PARKING COUNT FOR PROPOSED PARKING STALLS
- ▭ PROPOSED ASPHALT CONCRETE PAVEMENT
- ▭ PROPOSED MILL AND OVERLAY
- ▭ PROPOSED CONCRETE SIDEWALK
- ▭ PROPOSED HEAVY DUTY CONCRETE
- ▭ PROPOSED LANDSCAPE AREA
- ▭ PROPOSED BIORETENTION OR FLOW-THROUGH PLANTER
- ▭ PROPOSED RIPRAP

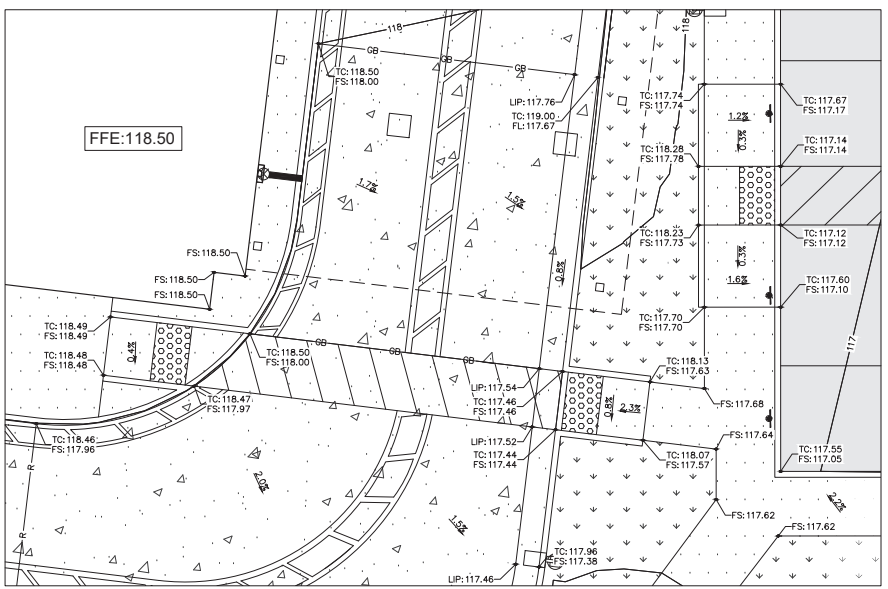
CONSTRUCTION NOTES

1. INSTALL STANDARD 90° PARKING STALL STRIPING PER DETAIL 5 ON SHEET C2.6.
2. INSTALL ACCESSIBLE ADA PARKING STALL STRIPING PER DETAIL 5 ON SHEET C2.6.
3. CLEARANCE BAR FOR DRIVE-THROUGH LANE.
4. PAINT YELLOW DRIVE-THRU STRIPING PER CHICK-FIL-A DRIVE-THROUGH STANDARDS.
5. INSTALL CROSSWALK PER DETAIL 7 ON SHEET C2.6.
6. PAINT "EV CHARGING" IN 12" WHITE LETTERS.
7. INSTALL DIRECTIONAL ARROW PER DETAIL 1 ON SHEET C2.6.
8. INSTALL DRIVE-THRU GRAPHICS PER DETAIL 2 ON SHEET C2.6.
9. INSTALL ACCESSIBLE ADA PARKING STALL SIGNAGE PER DETAIL 6 ON SHEET C2.6.
10. INSTALL ELECTRICAL VEHICLE CHARGING PARKING STALL SIGNAGE PER ARCHITECTURAL PLANS.

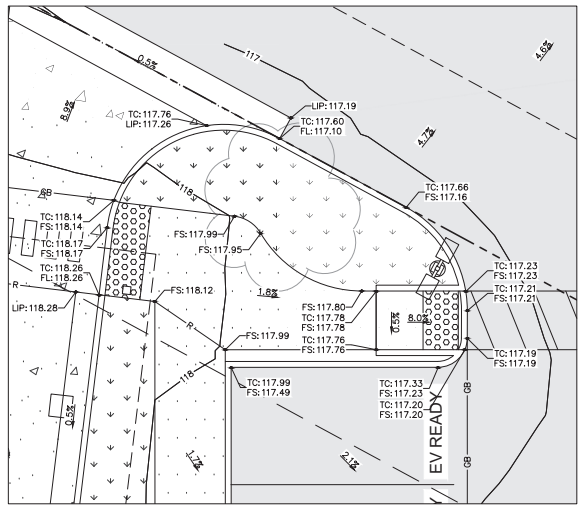


 4637 CHADOT DRIVE, SUITE 200, PLEASANTON, CA 94686 PHONE: 925.306.3900 FAX: 925.306.4849 WWW.KIMLEY-HORN.COM		KHA PROJECT 09/27/22 DATE 09/27/2022 SCALE AS SHOWN DESIGNED BY SAL DRAWN BY CIC CHECKED BY JMK	CHICK-FIL-A 5705 LONE TREE WAY ANTIPOCH, CA 94531	PRELIMINARY SIGNING AND STRIPING PLAN	SHEET NUMBER C2.5	REVISIONS No. DATE BY
	(Empty revision table)					

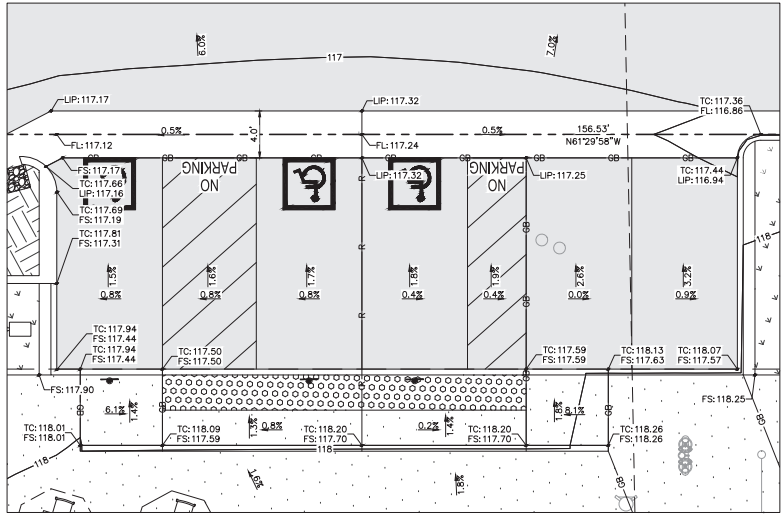
KIMLEY-HORN AND ASSOCIATES, INC. 5000 DUFFERIN ROAD, SUITE 300, PLEASANTON, CA 94566
 PROJECT NO. 2022022155 - CHICK-FIL-A 5705 LONE TREE WAY, ANTIPOCH, CA 94531
 SHEET NO. 3 OF 3
 DATE 09/21/2022
 SCALE AS SHOWN
 DESIGNED BY SAL
 DRAWN BY CIC
 CHECKED BY JMK
 KIMLEY-HORN AND ASSOCIATES, INC. 5000 DUFFERIN ROAD, SUITE 300, PLEASANTON, CA 94566
 PROJECT NO. 2022022155 - CHICK-FIL-A 5705 LONE TREE WAY, ANTIPOCH, CA 94531
 SHEET NO. 3 OF 3
 DATE 09/21/2022
 SCALE AS SHOWN
 DESIGNED BY SAL
 DRAWN BY CIC
 CHECKED BY JMK



ENLARGED GRADING DETAIL 1
SCALE: 1" = 5'



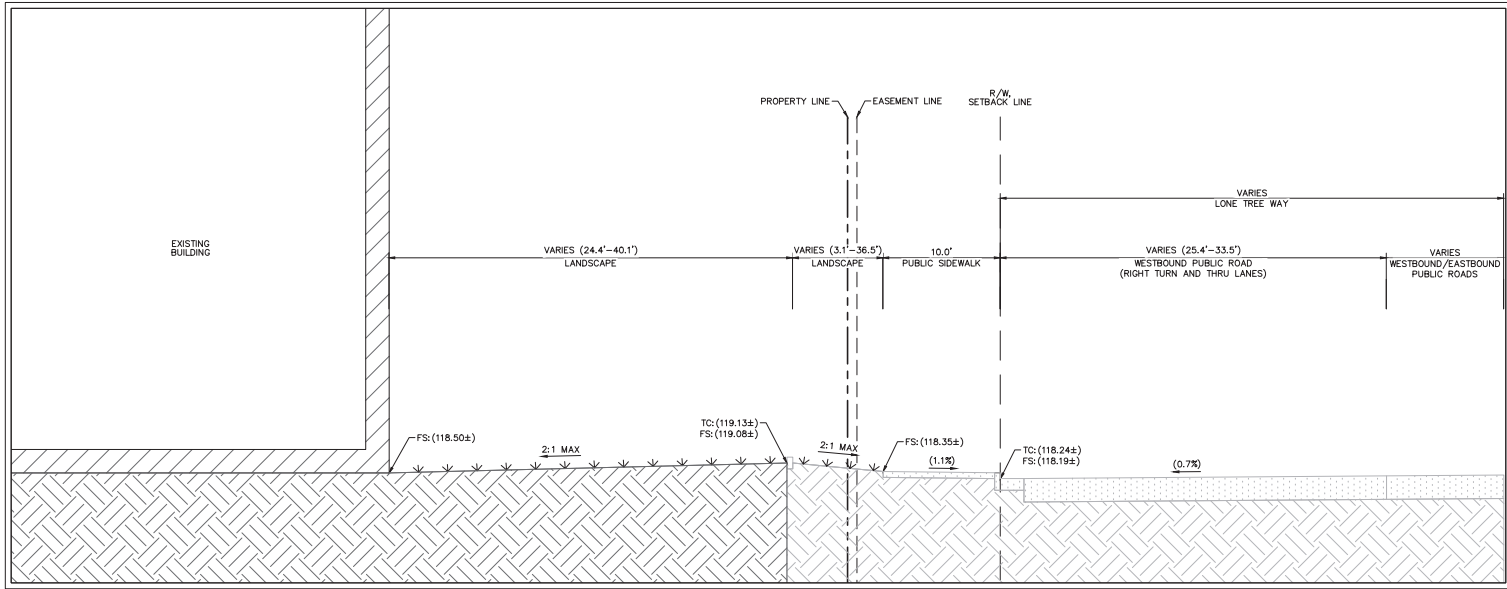
ENLARGED GRADING DETAIL 2
SCALE: 1" = 5'



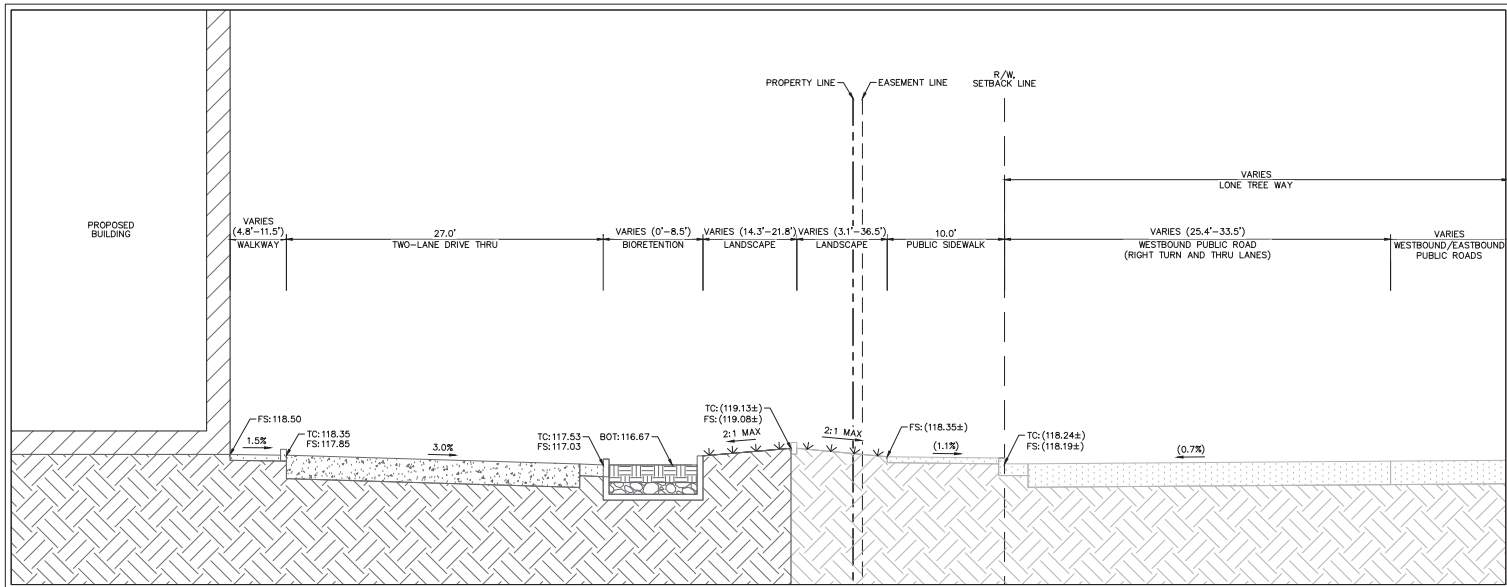
ENLARGED GRADING DETAIL 3
SCALE: 1" = 5'

KIMLEY-HORN 4637 CHADOT DRIVE, SUITE 300, PLEASANTON, CA 94566 PHONE: 925-398-3985 FAX: 925-398-4849 WWW.KIMLEY-HORN.COM		NO.	DATE
		REVISIONS	BY
KHA PROJECT	DATE	SCALE	DESIGNED BY
2022022155	09/21/2022	AS SHOWN	SAL
CHICK-FIL-A	5705 LONE TREE WAY	ANTIOCH, CA 94531	DRAWN BY
CHICK-FIL-A	5705 LONE TREE WAY	ANTIOCH, CA 94531	CIC
GRADING ENLARGEMENTS			CHECKED BY
			JMK
SHEET NUMBER	C3.2		

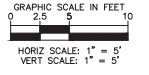
KIMLEY-HORN, INC. 6500 WILSON AVENUE, SUITE 200, FLEMINGTON, NJ 08822
 TEL: 908.239.7300 FAX: 908.239.7301 WWW.KIMLEY-HORN.COM
 THIS DOCUMENT, TOGETHER WITH THE CONTRACT AND ANY PREVIOUS REVISED CONTRACTS, IS THE SOLE AGREEMENT OF THE PARTIES. NO OTHER CONTRACTS, AGREEMENTS, OR CORRECTIONS SHALL BE APPLIED TO THIS PROJECT WITHOUT THE WRITTEN AUTHORIZATION AND APPROVAL OF KIMLEY-HORN AND ASSOCIATES, INC.



LONE TREE WAY TYPICAL SECTION
AS NOTED



PROPOSED LONE TREE WAY TYPICAL SECTION
AS NOTED



No.	REVISIONS	DATE	BY

Kimley-Horn
 4637 CHADOT DRIVE, SUITE 200, FLEMINGTON, NJ 08822
 PHONE: 908.239.7300 FAX: 908.239.7301
 WWW.KIMLEY-HORN.COM



KHA PROJECT	CHICK-FIL-A
DATE	09/21/2022
SCALE	AS SHOWN
DESIGNED BY	SAL
DRAWN BY	CJC
CHECKED BY	JMK

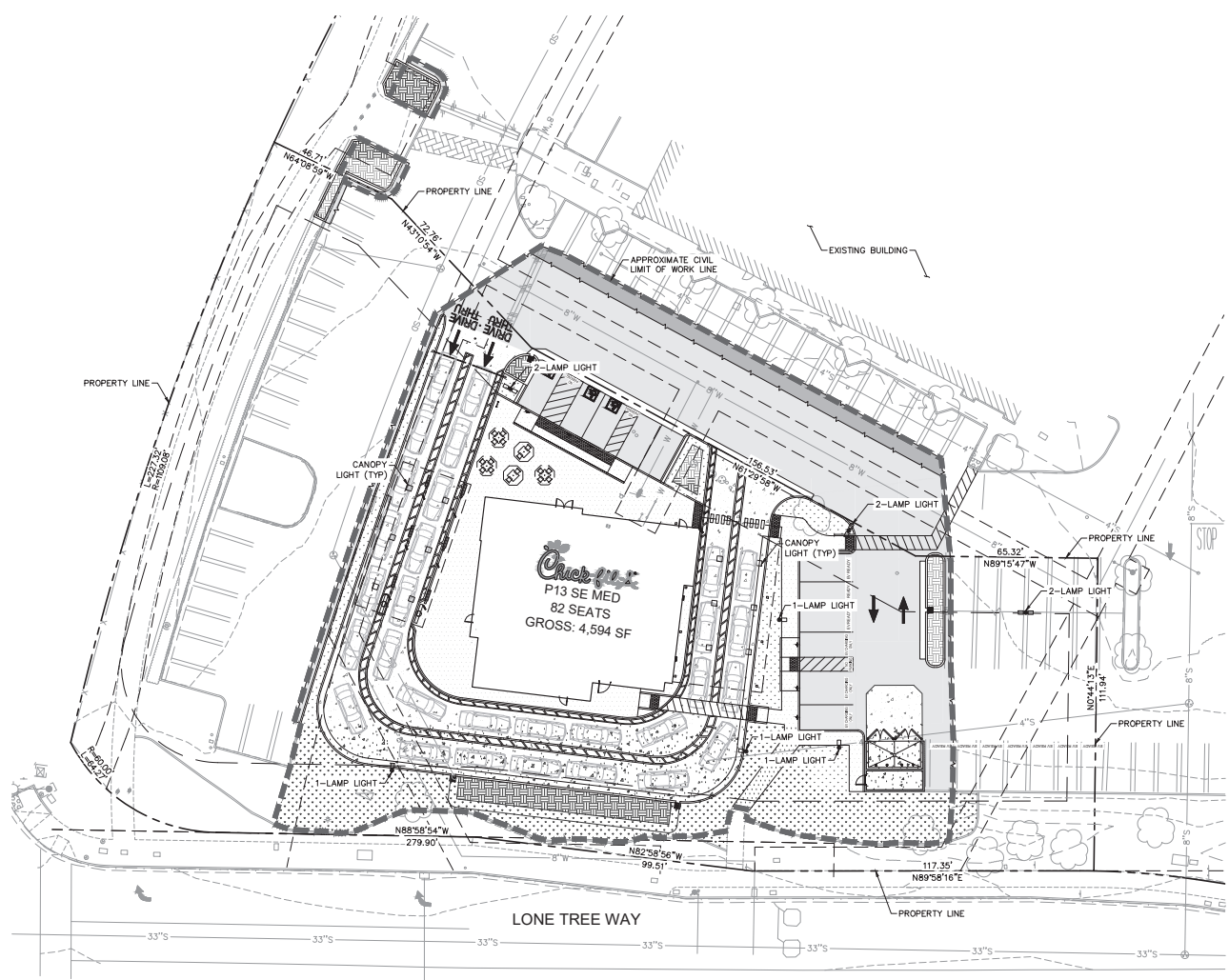
CHICK-FIL-A
 5705 LONE TREE WAY
 ANTIPOCH, CA 94531

CHICK-FIL-A
 5705 LONE TREE WAY
 ANTIPOCH, CA 94531

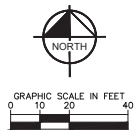
TRUE CROSS SECTIONS

SHEET NUMBER
C3.4

1. ALL WORK SHALL BE IN ACCORDANCE WITH THE CITY OF ANTIPOCH, CALIFORNIA, AND THE STATE OF CALIFORNIA. THE DESIGNER SHALL BE RESPONSIBLE FOR OBTAINING ALL NECESSARY PERMITS AND APPROVALS FROM THE CITY OF ANTIPOCH AND THE STATE OF CALIFORNIA. THE DESIGNER SHALL BE RESPONSIBLE FOR OBTAINING ALL NECESSARY PERMITS AND APPROVALS FROM THE CITY OF ANTIPOCH AND THE STATE OF CALIFORNIA. THE DESIGNER SHALL BE RESPONSIBLE FOR OBTAINING ALL NECESSARY PERMITS AND APPROVALS FROM THE CITY OF ANTIPOCH AND THE STATE OF CALIFORNIA.



- LEGEND**
- PROPERTY LINE
 - APPROXIMATE CIVIL LIMIT OF WORK LINE
 - - - EASEMENT LINE
 - - - SETBACK LINE
 - - - SAWCUT LINE
 - ACCESSIBLE PATH OF TRAVEL (FOR REFERENCE ONLY, DO NOT PAINT)
 - ROW PARKING COUNT
 - ▭ PROPOSED ASPHALT CONCRETE PAVEMENT
 - ▭ PROPOSED MILL AND OVERLAY
 - ▭ PROPOSED CONCRETE SIDEWALK
 - ▭ PROPOSED HEAVY DUTY CONCRETE
 - ▭ PROPOSED LANDSCAPE AREA
 - ▭ PROPOSED BIORETENTION OR FLOW-THROUGH PLANTER
 - ▭ PROPOSED RIPRAP



	4637 CHADOT DRIVE, SUITE 300, PLEASANTON, CA 94886 PHONE: 925-398-3985 FAX: 925-398-4849 WWW.KIMLEY-HORN.COM			
KHA PROJECT 09/27/22 DATE 09/27/2022 SCALE AS SHOWN DESIGNED BY SAL DRAWN BY CIC CHECKED BY JAK	CHICK-FIL-A 5705 LONE TREE WAY ANTIPOCH, CA 94531			
CHICK-FIL-A 5705 LONE TREE WAY ANTIPOCH, CA 94531		PRELIMINARY LIGHTING PLAN		
SHEET NUMBER C6.0				
			REVISIONS No. DATE BY	



Chick-fil-A
5200 Buffington Road
Atlanta, Georgia
30349-2998



CHICK-FIL-A
HWY 4 & LONE TREE WAY
5705 HWY 4 & LONE TREE WAY
ANTIOCH, CA 94531

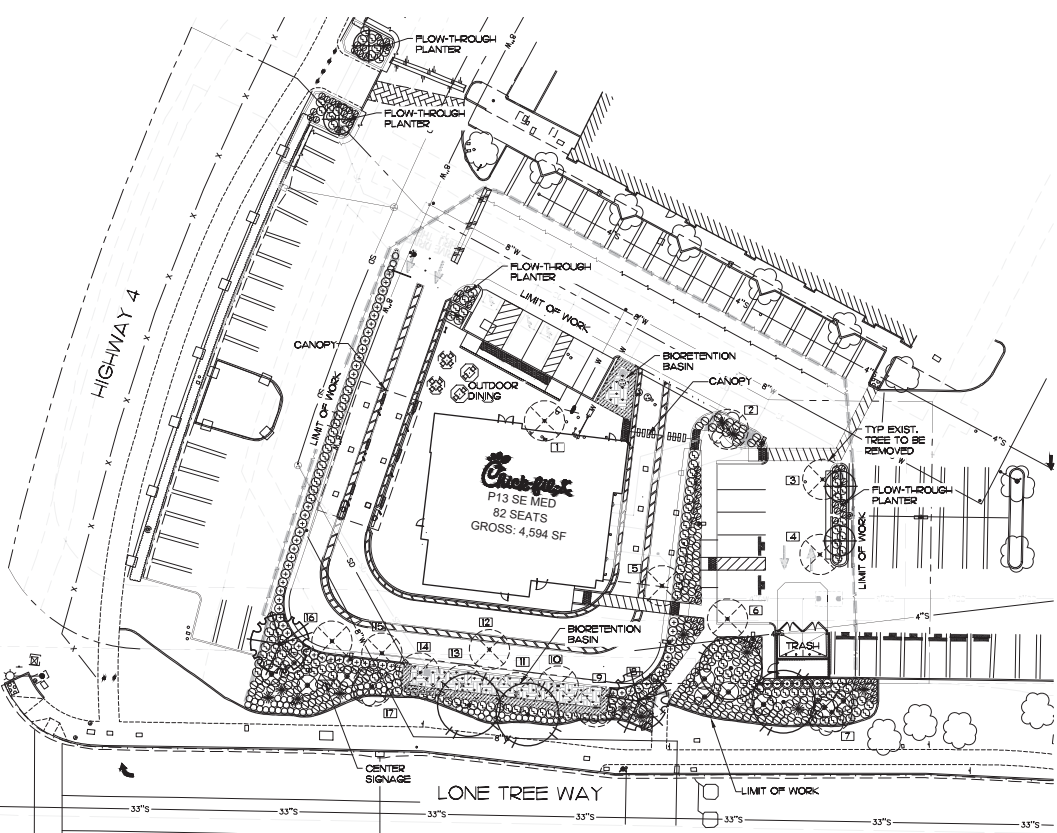
FSR#05122

BUILDING TYPE: P13 SE MED
RELEASE: 21.11
PROJECT STATUS
REVISION SCHEDULE
NO. DATE DESCRIPTION

CONSULTANT PROJECT #
DATE: 6-20-22
DRAWN BY: R66047

PRELIMINARY
LANDSCAPE PLAN
SHEET NUMBER

L1.0



I PRELIMINARY LANDSCAPE PLAN
SCALE: 1" = 20'-0"

PLANTING LEGEND

SYMBOL	BOTANICAL NAME	COMMON NAME	SIZE	QTY.	REMARKS	WUCOLS IV REGION I
(Symbol)	ABUTILUS VARINA'	STRAWBERRY TREE	24" BOX	4	MULTI-TRUNK	L
(Symbol)	LAGERSTROEMIA X NATCHEZ	GRAPE MYRTLE	24" BOX	2	MULTI-TRUNK	L
(Symbol)	TYP. EXISTING TREE TO BE REMOVED (7) TOTAL					

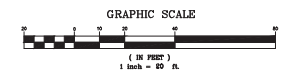
SYMBOL	BOTANICAL NAME	COMMON NAME	SIZE	QTY.	REMARKS	WUCOLS IV REGION I
(Symbol)	AGAVE VILMORIANA	OCTOPUS AGAVE	5 GAL.	12	AS SHOWN	L
(Symbol)	ARISTIDA PURPUREA	PURPLE THREE-AWN	5 GAL.	40	2'-6" O.C.	L
(Symbol)	CASALPINA PLUCHERRIMA	RED BIRD OF PARADISE	15 GAL.	9	AS SHOWN	L
(Symbol)	HESPERALOE PARVIFLORA YELLOW	YELLOW YUCCA	5 GAL.	15	3'-0" O.C.	L
(Symbol)	LEYMUS CONDENSATUS 'CANTON PRINCE'	WILD RYE	5 GAL.	148	3'-0" O.C.	L
(Symbol)	LIGULSTRUM SINENSE 'SUNSHINE'	SUNSHINE CHINESE PRIVET	5 GAL.	56	3'-6" O.C.	L
(Symbol)	LOMANDRA HYBRIDA 'LONLON'	LIME TUFF MAT RUSH	5 GAL.	60	2'-6" O.C.	L
(Symbol)	MULLENBERGIA CAPILLARIS 'REGAL NEST'	PINK MILLY	5 GAL.	147	3'-6" O.C.	L
(Symbol)	PODOCARPUS M. MAKI	SHRUBBY TEW PINE	15 GAL.	7	4'-0" O.C.	M
BIORETENTION BASINS (2) - BOTTOM						
(Symbol)	JUNCUS PATENS	CALIFORNIA GRAY RUSH	1 GAL.	717 SF.	24" O.C.	L
BIORETENTION BASINS (2) - SLOPED SIDES						
(Symbol)	ARISTIDA PURPUREA	PURPLE THREE-AWN	1 GAL.	431 SF.	18" O.C.	L
(Symbol)	SCOTELLOA GRACIOSA 'BLOND AMBITION'	BLUE GRAMA	1 GAL.	431 SF.	18" O.C.	L
FLOW-THROUGH PLANTERS (4)						
(Symbol)	ARISTIDA PURPUREA	PURPLE THREE-AWN	1 GAL.	39	24" O.C.	L
(Symbol)	MULLENBERGIA CAPILLARIS	PINK MILLY	5 GAL.	25	3'-0" O.C.	L
(Symbol)	FRAXINUS LUCIFOLIA SPP LYONII	CAROLINA LAUREL CHERRY	15 GAL.	4	STANDARD	L

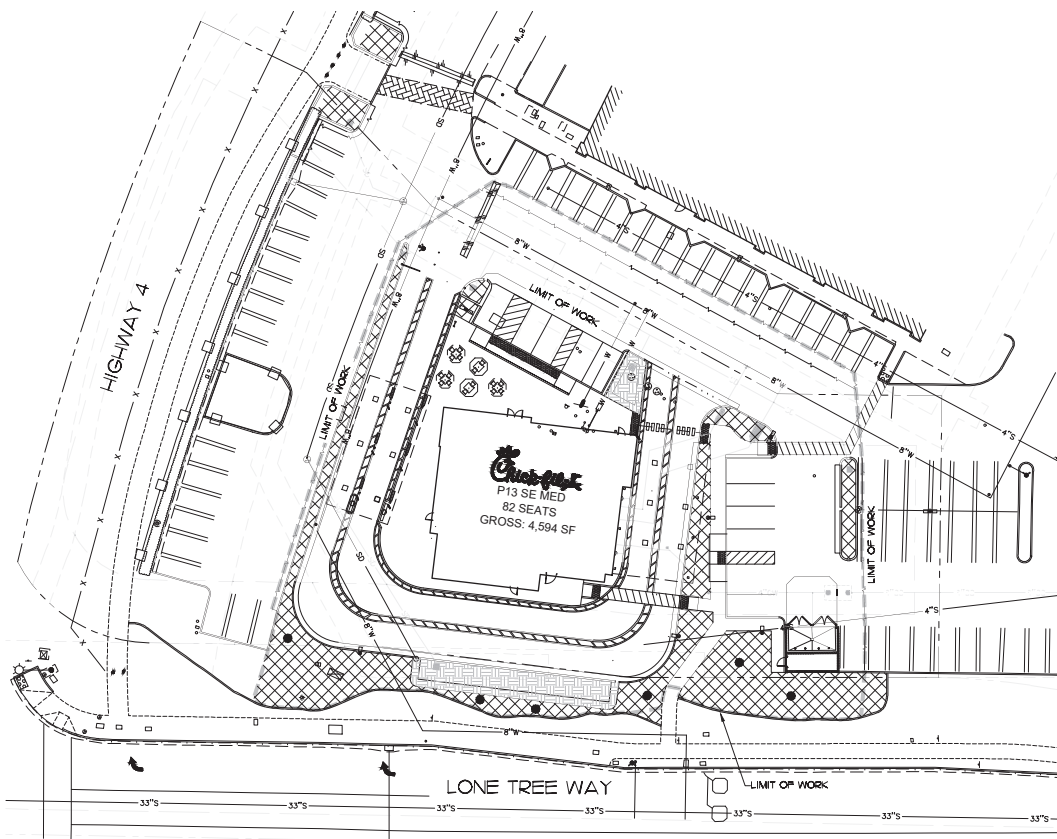
PLANTING NOTES

- CONTRACTOR IS TO REVIEW PLANS, VERIFY SITE CONDITIONS AND PLANT QUANTITIES PRIOR TO INSTALLATION. CONFLICTS BETWEEN THE SITE AND THESE PLANS OR WITHIN THESE PLANS SHALL BE BROUGHT TO THE ATTENTION OF THE OWNER'S AUTHORIZED REPRESENTATIVE PRIOR TO LANDSCAPE INSTALLATION. ANY DEVIATIONS FROM THE PLANS OR SPECIFICATIONS IS TO HAVE WRITTEN APPROVAL.
- ALL PLANT MATERIAL SHALL BE IN ACCORDANCE WITH THE LATEST EDITION OF AMERICAN NURSERY AND LANDSCAPE ASSOCIATION STANDARDS. WWW.ALANA.ORG
- LANDSCAPE ARCHITECT SHALL APPROVE PLANT MATERIAL PLACEMENT BY CONTRACTOR PRIOR TO INSTALLATION.
- CONTRACTOR TO INCLUDE IN HIS BID THE REPAIR OF ANY AND ALL DAMAGE RESULTING FROM INSTALLATION OF PLANTING ITEMS. CONFORM TO BUSINESS CONDITIONS.
- PERIMETER OF ALL RAISED PLANTERS TO HAVE A ROOT BARRIER TO REDIRECT ROOT GROWTH PER MANUFACTURER'S SPECIFICATIONS.
- FINISH GRADE TO BE 2" BELOW TOP OF CURB OR SIDEWALK FOR PLANTING AREAS.
- FERTILIZER FOR ALL PLANTING AREAS SHALL BE AS SPECIFIED WITHIN THE SOILS REPORT.
- ALL PLANTING AND IRRIGATION ON THIS PROJECT TO MEET OR EXCEED CITY LANDSCAPE BUSINESS STANDARDS AND AGENCY REQUIREMENTS.
- ALL PLANTER AREAS SHALL BE TOP DRESSED WITH 3" MINIMUM MULCH COVER.
- ALL PLANTING AREAS SHALL BE IRRIGATED WITH SUB-GRADE BUBBLERS FOR TREES AND DRIPLINE OR DRIP EMITTERS FOR SUB-GRADE COVERS. CONNECTED TO AUTOMATIC REMOTE CONTROL VALVES AND TIED INTO AN AUTOMATIC IRRIGATION 'SMART' CONTROLLER.
- THE LANDSCAPE CONTRACTOR SHALL MAINTAIN ALL PLANTED AREAS BY MEANS OF CONTINUOUS WATERING. FERTILIZING, WEEDING, AND/OR OTHER OPERATIONS NECESSARY FOR PROPER CARE AND UPGRADE. THE LANDSCAPE CONTRACTOR SHALL MAINTAIN ALL PLANTINGS AS SPECIFIED ABOVE FOR A PERIOD OF NINETY (90) DAYS. ALL PLANTER BEDS TO BE AMENDED WITH SOIL. PREPARATION PER SPECIFICATIONS. NO DEVIATIONS ARE ALLOWED.

LANDSCAPE CALCULATIONS

SUBS E GROUND COVER AREA:	6,277 SF.
TURF AREA:	0 SF.
BIORETENTION BASINS:	1,050 SF.
FLOW-THROUGH PLANTERS:	646 SF.
TOTAL LANDSCAPE AREA:	7,023 SF.





I PRELIMINARY LANDSCAPE PLAN
SCALE: 1" = 20'-0"

LEGEND	
	SHRUBS - LOW WATER USE - 5,713 SF, IRRIGATION - HIGH EFFICIENCY DRIP TUBING, PERCENTAGE OF LANDSCAPED AREA - 81%
	TREES - LOW WATER USE - 150 SF, IRRIGATION - HIGH EFFICIENCY BUBBLER NOZZLES, PERCENTAGE OF LANDSCAPED AREA - 2%
	BIO-RETENTION - LOW WATER USE - 1,150 SF, IRRIGATION - HIGH EFFICIENCY DRIP TUBING, PERCENTAGE OF LANDSCAPED AREA - 17%
TOTAL LANDSCAPED AREA - 7,013 SF.	

WATER CONSERVATION STATEMENT

- ALL PLANT MATERIALS SELECTED FOR THIS SITE WERE APPROPRIATE FOR THE GEOGRAPHICAL LOCATION AND LOCAL CLIMATE. THEIR ADAPTABILITY TO DROUGHT DATA FROM WUCOLS II HAS BEEN USED FOR DETERMINING SPECIES PLANT FACTORS FOR THE WATER USE CALCULATIONS.
- PLANTS WITH SIMILAR WATER USE REQUIREMENTS WERE GROUPED TOGETHER.
- SHRUB AREAS ARE PLANTED WITH LOW WATER USE PLANTS.
- IRRIGATION SECTIONS/HYDROZONES ARE SEPARATED BY CONSIDERING PLANT SPECIES FACTOR, PLANT DENSITY AND MICROCLIMATE. IF LOW WATER USE PLANTS ARE MIXED WITH MODERATE WATER USE PLANTS IN THE SAME HYDROZONE, THE MODERATE WATER USE FACTOR IS USED FOR THE WATER USE CALCULATION. SEE MWELD CALC. SHEETS.
- THE IRRIGATION SYSTEM UTILIZES LOW-VOLUME DISTRIBUTION W/ A MASTER VALVE, FLOW SENSOR, CHECK VALVES, ET BASED AUTOMATIC CONTROLLER W/ WATER BUDGETING TECHNOLOGY & RAIN SHUT-OFF.
- SPECIAL LANDSCAPE AREAS (CRUSHED ROCK) ARE UTILIZED TO REDUCE WATER USE AREAS.

WATER EFFICIENT LANDSCAPE WORKSHEET (1/3)
SECTION A. HYDROZONE INFORMATION TABLE—Please complete the hydrozone table(s) for each hydrozone. Use as many tables as necessary to provide the square footage of landscape area per hydrozone.

Hydrozone *	Zone or Valve	Irrigation Method **	Area (sq. ft.)	% of Landscape Area
LOW SHRUBS	1	DRIP	5,713	81%
LOW TREES	2	BUBBLER	150	2%
LOW BIO-RET.	3	DRIP	1,150	17%
Total				100%

* Hydrozone
HW = High Water Use Plants
MW = Moderate Use Plants
LW = Low Water Use Plants

** Irrigation Method
MS = Micro-spray
S = Spray
B = Bubbler
D = Drip
O = Other

WATER EFFICIENT LANDSCAPE WORKSHEET (2/3)
SECTION B. WATER BUDGET CALCULATIONS
SECTION B1. Maximum Applied Water Allowance (MAWA)

The project's Maximum Applied Water Allowance shall be distributed into the equation:
MAWA = (ETo) (0.62) (0.7 x LA) + (0.3 x SLA)

where:
MAWA = Maximum Applied Water Allowance (gallons per year)
ETo = Reference Evapotranspiration from Appendix A (inches per year) 48.3
0.7 = ET Adjustment Factor (ETAF) 0.45
LA = Landscaped Area (square feet)
0.62 = Conversion factor (to gallons per square foot)
SLA = Portion of the landscape area identified as Special Landscape Area (square feet)
0.3 = the additional ET Adjustment Factor for Special Landscape Area (1.0 - 0.7 = 0.3)
Maximum Applied Water Allowance = 94,518 gallons per year

Show calculations:
48.3 x 0.62(0.45 x 7,013)
29.95 (3,155.85)
94,518

Effective Precipitation (Epp)
If considering Effective Precipitation, use 25% of annual precipitation. Use the following equation to calculate Maximum Applied Water Allowance:
MAWA = (ETo - Epp) (0.62) (0.7 x LA) + (0.3 x SLA)

Maximum Applied Water Allowance = _____ gallons per year

Show calculations:

WATER EFFICIENT LANDSCAPE WORKSHEET (3/3)
SECTION B. WATER BUDGET CALCULATIONS
SECTION B2. Estimated Total Water Use (ETWU)

The project's Estimated Total Water Use is calculated using the following formula:
 $ETWU = (ETo)(0.62) \left(\frac{PF \times HA}{0.71} + SLA \right)$

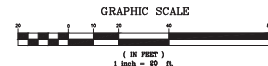
where:
ETWU = Estimated total water use per year (gallons per year)
ETo = Reference Evapotranspiration (inches per year) - see table below for Antioch

ETo	Jan	Feb	Mar	Apr	May	Jun	Jul	Aug	Sep	Oct	Nov	Dec	Annual at ETo
Antioch	1.0	1.5	2.9	4.5	6.1	7.1	7.9	6.7	5.2	3.2	1.4	0.7	48.3

PF = Plant Factor from WUCOLS (see Definitions)
HA = Hydrozone Area (high, medium, and low water use areas) (square feet)
SLA = Special Landscape Area (square feet)
0.62 = Conversion Factor (to gallons per square foot)
IE = Irrigation Efficiency (minimum 0.7) 0.75 BUBBLER - 0.81 DRIP

Hydrozone	Plant Water Use Type(s)	Plant Factor (PF)	Area (HA) (square feet)	PF x HA (square feet)
1	LOW SHRUBS	0.3	5,713	1,713.9
2	LOW TREES	0.3	150	45
3	LOW BIO-RET.	0.3	1,150	345
Sum				
SLA				

Hydrozone Table for Calculating ETWU
DRIP SHRUB & BIO-RET = 48.3 x 0.62 (0.3 x 6,863.01)
29.95 (3,058.901)
29.95 (2,541.85) = 76,128 GAL
TREES = 48.3 x 0.62 (0.3 x 1,150.75)
29.95 (349.73)
29.95 (469) = 13,777 GAL
TOTAL ETWU = 89,905 GAL



Chick-fil-A
5200 Buffington Road
Atlanta, Georgia
30349-2998



CHICK-FIL-A
HWY 4 & LONE TREE WAY
5705 HWY 4 & LONE TREE WAY
ANTIOCH, CA 94531

FSR#05122
BUILDING TYPE: P13 SE MED
RELEASE: 21.11
PRINTED FOR:
PROJECT STATUS
REVISION SCHEDULE
NO. DATE DESCRIPTION

CONSULTANT PROJECT #
DATE: 9-20-22
DRAWN BY: RAUH
PRELIMINARY WATER CONSERVATION PLAN
SHEET NUMBER
L1.1



Chick-fil-A

Chick-fil-A
5200 Buffington Road
Atlanta, Georgia
30349-2998

WARE MALCOMB
Leading Design for Commercial Real Estate

2777 E. Camelback Rd. Suite #325
Phoenix, AZ 85016
P 480.767.1001

CHICK-FIL-A
HWY 4 & LONE TREE FSU
5705 LONE TREE WAY
ANTIOCH, CA 94531

FSR#05122

BUILDING TYPE / SIZE: P13 SE MED
RELEASE: 21.11
PRINTED FOR:
ENTITLEMENT PACKAGE
REVISION SCHEDULE
NO. DATE DESCRIPTION

CONSULTANT PROJECT # PH022-0188-00

DATE: 10/20/2022
DRAWN BY: J.M.A.
CHECKED BY: J.M.A.
REVISION SCHEDULE

REVISION SCHEDULE

NO. DATE DESCRIPTION

REVISION SCHEDULE

NO. DATE DESCRIPTION

REVISION SCHEDULE

NO. DATE DESCRIPTION

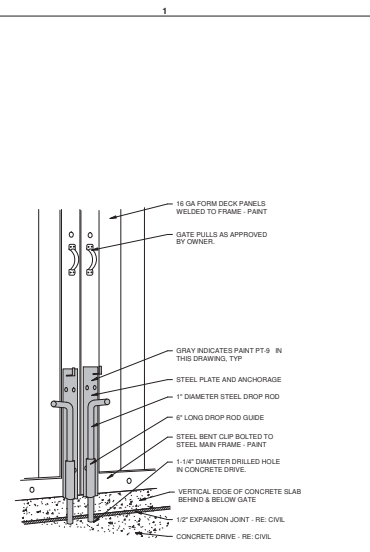
REVISION SCHEDULE

NO. DATE DESCRIPTION

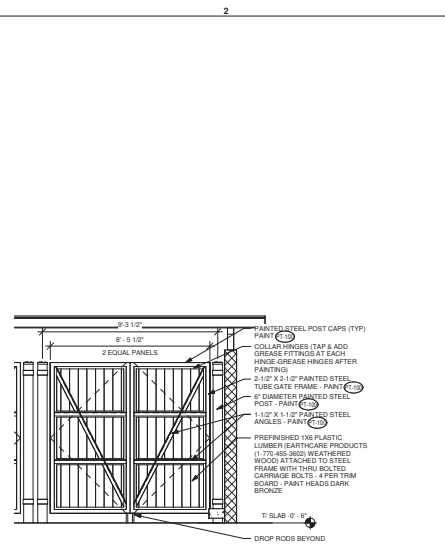
REVISION SCHEDULE

A-103

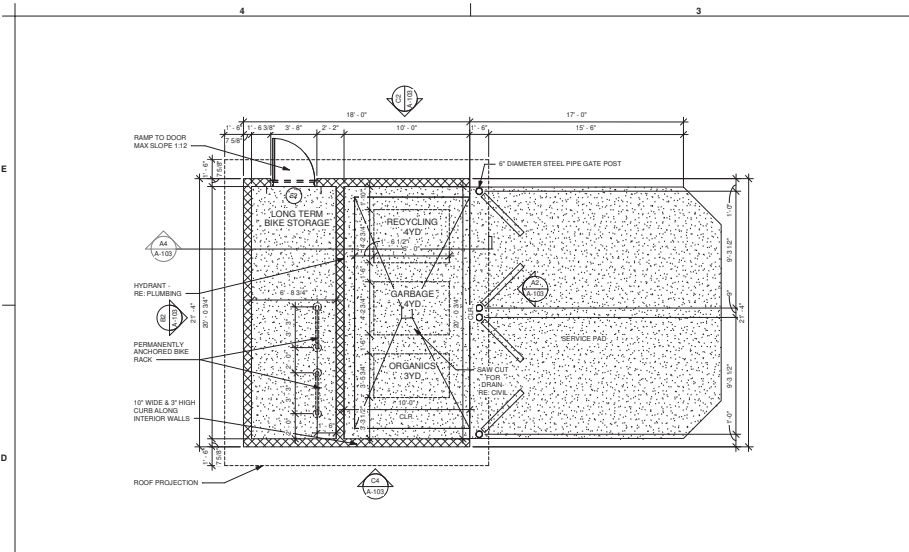
ENTITLEMENT PACKAGE
SHEET NUMBER



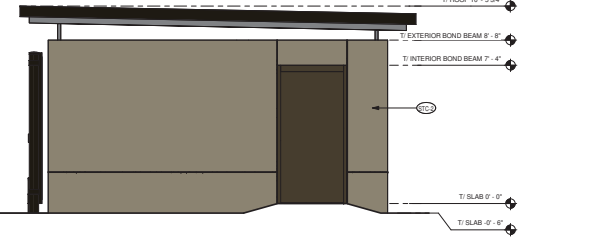
D1 REFUSE ENCLOSURE DROP ROD 3-D DETAIL
1/2" = 1'-0"



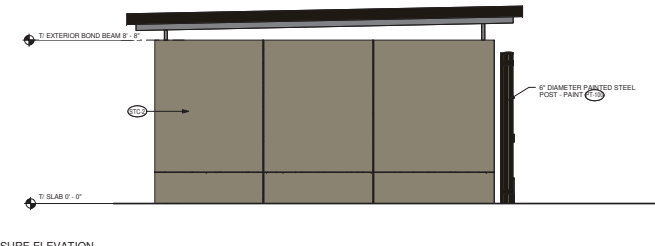
D2 REFUSE ENCLOSURE GATE REAR ELEVATION
3/8" = 1'-0"



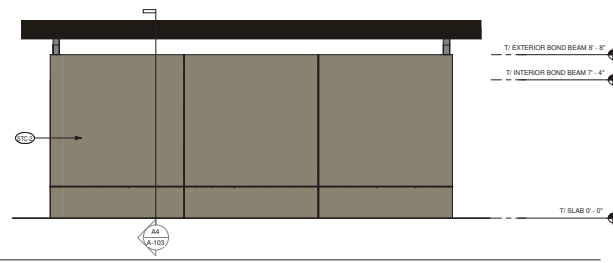
D4 REFUSE ENCLOSURE PLAN
1/4" = 1'-0"



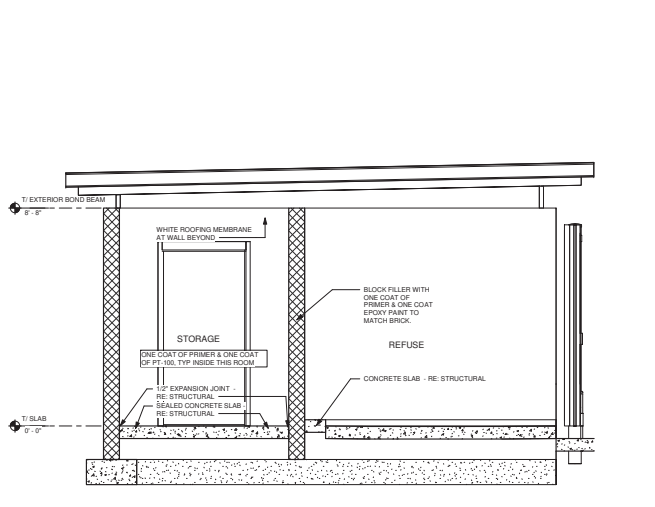
C2 REFUSE ENCLOSURE ELEVATION
3/8" = 1'-0"



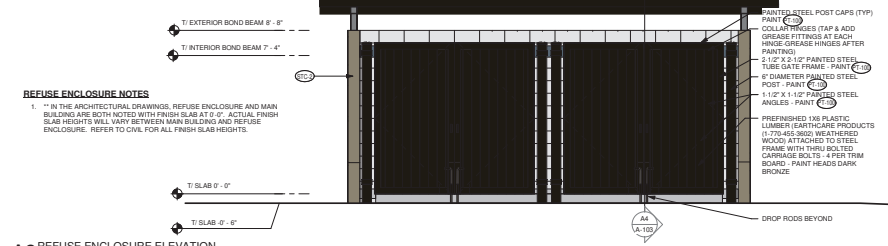
C4 REFUSE ENCLOSURE ELEVATION
3/8" = 1'-0"



B2 REFUSE ENCLOSURE ELEVATION
3/8" = 1'-0"



A4 REFUSE ENCLOSURE SECTION
1/2" = 1'-0"



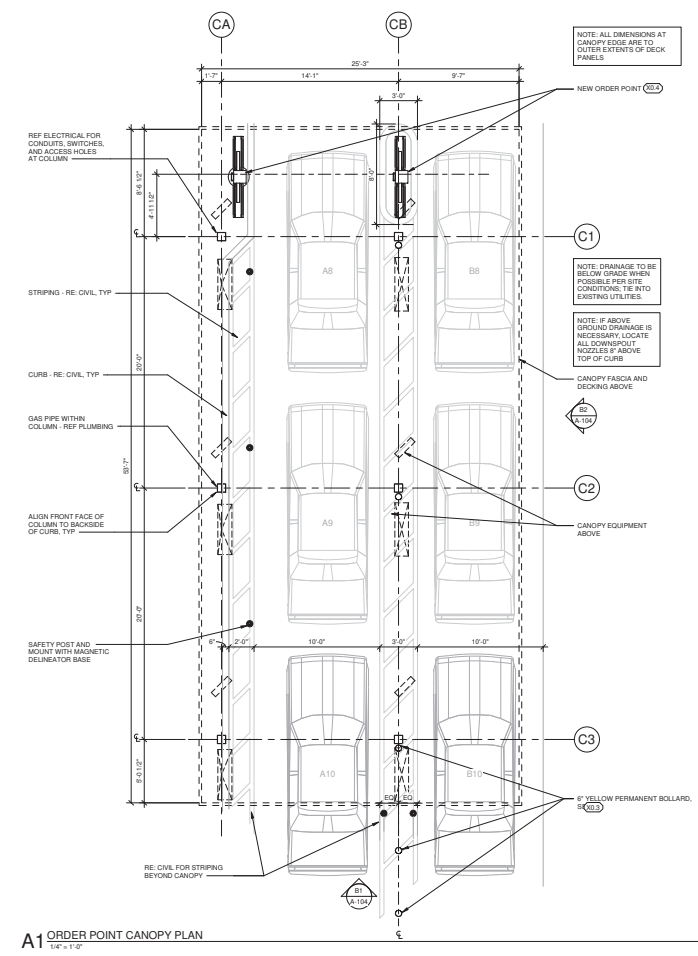
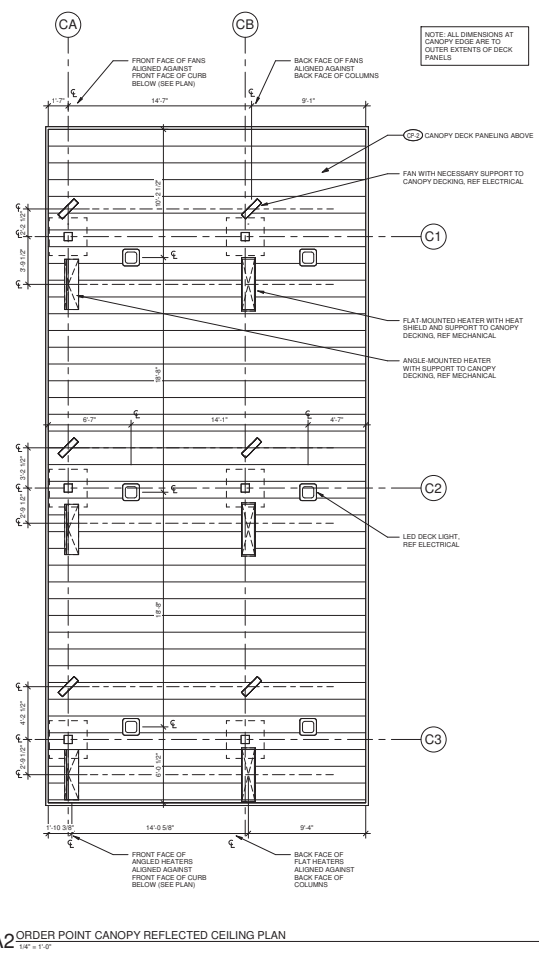
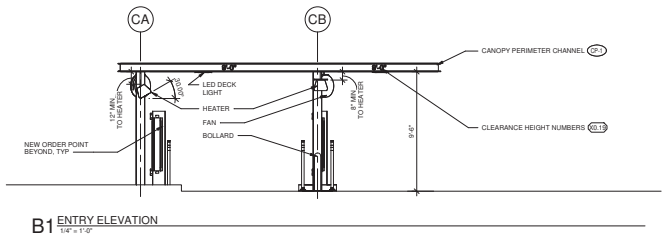
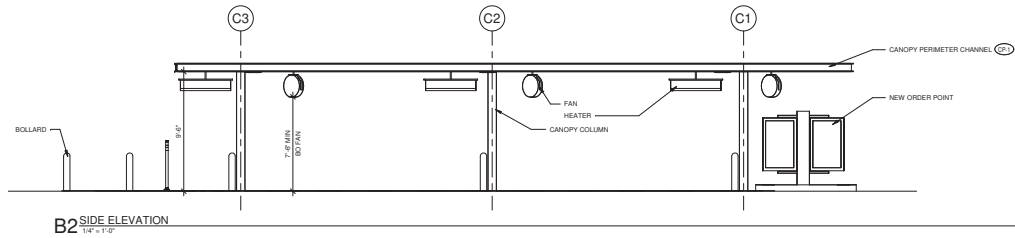
A2 REFUSE ENCLOSURE ELEVATION
3/8" = 1'-0"

REFUSE ENCLOSURE NOTES
1. ** IN THE ARCHITECTURAL DRAWINGS, REFUSE ENCLOSURE AND MAIN BUILDING ARE BOTH NOTED WITH FINISH SLAB AT 0'-0\"/>

10/20/2022 6:17:18 PM
BM 390/CAL_05122_Hwy 4 & Lone Tree Way FSU_2022_6_FSR#05122_Hwy 4 & Lone Tree Way FSU_ARC.rvt
10-SE-05122-A-103-REFUSE ENCLOSURE

9/22/2022 12:27:34 PM BM 360/CAL_0512_Hwy 4 & Lone Tree Way FSU_2022_6_FSR/0512_Hwy 4 & Lone Tree Way FSU_ARC.rvt
 10-SE-0512-A-10-ORDER POINT CANOPY

ORDER POINT EQUIPMENT SCHEDULE								
EQUIPMENT	APPLICABLE TIER			SUPPLIER	CONTACT	MANUFACTURER	MODEL NUMBER	COMMENTS
	1	2	3					
X0.3 BOLLARD SLEEVE	-	X	X	GC		INTERSTATE PRODUCTS OR EQUAL	1726VRS - EAGLE 6"	
X0.4 C7 ORDER POINT W/O CANOPY	-	X	X	UNISTRUCTURES OR CHANDLER SIGNS	Carroll Ward (678 974-1759) carroll@unistructures.com OR Kristen Hamilton, Amy McCann, or Christi Quinlan (210-348-3864) c7@chick-fil-a.com	UNISTRUCTURES OR CHANDLER SIGNS		8' L x 15' W x 77" H. See shop drawings for more information. Dark Bronze textured finish. Route conduit from building to order point as indicated on drawings
X0.5 C7 DOUBLE CLEARANCE BAR	-	BY SITE	BY SITE	UNISTRUCTURES OR CHANDLER SIGNS	SEE X0.4	UNISTRUCTURES OR CHANDLER SIGNS		14' 6" L x 9' 0" H. See shop drawings for more information. Dark Bronze textured finish
E X0.15 CLEARANCE TEXT	-	X	X	LANE OR FASHION	Jerry Tolbert (706-546-3515) jtolb@lanesupply.com OR Jason Helms (786-243-8111) jtolb@lanesupply.com	LANE OR FASHION		



Chick-fil-A
 Chick-fil-A
 5200 Buffington Road
 Atlanta, Georgia
 30349-2998

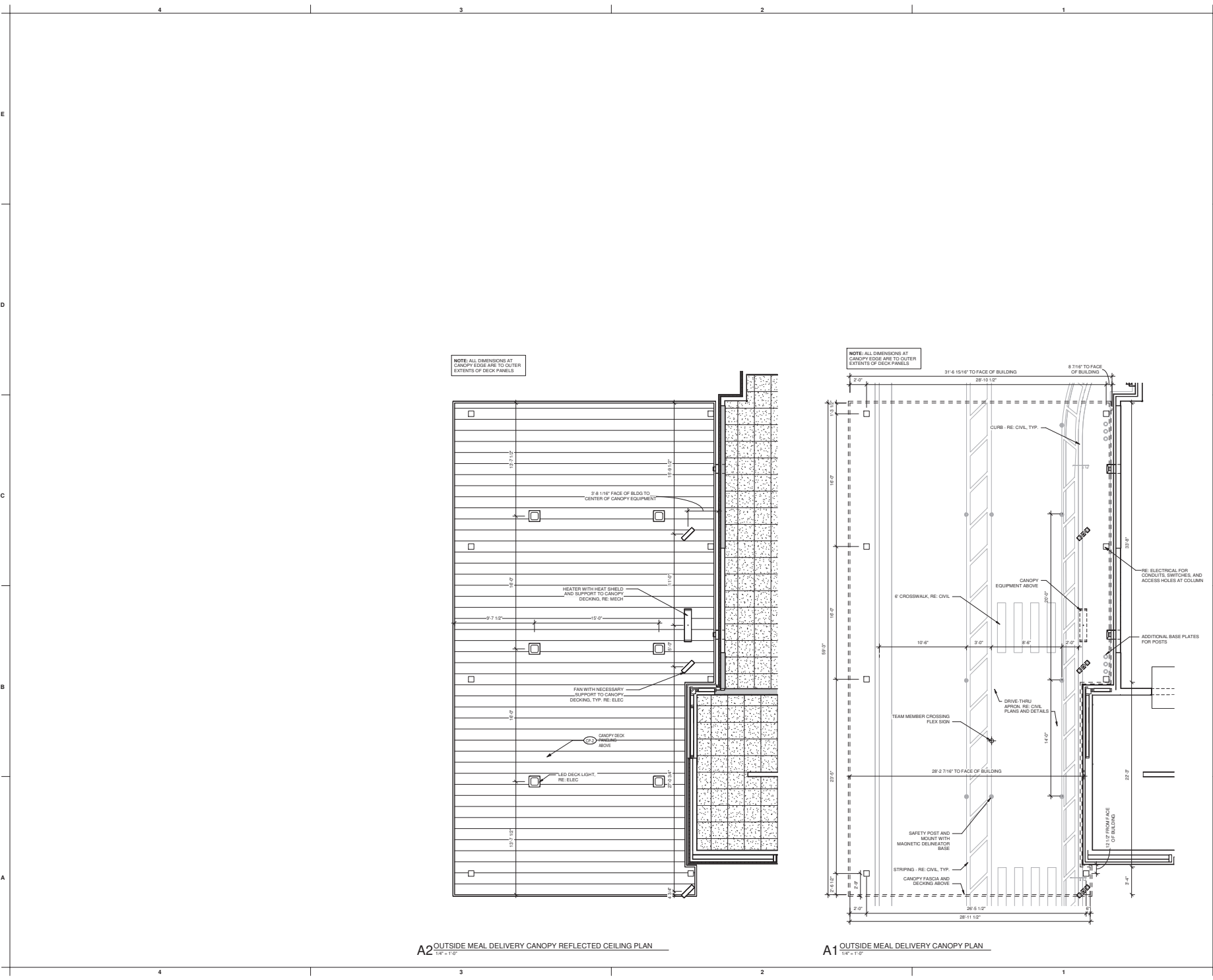
WARE MALCOMB
 Leading Design for Commercial Real Estate
 2777 E. Camelback RD, Suite #325
 PHOENIX, AZ, 85016
 P 480.767.1001

CHICK-FIL-A
 HWY 4 & LONE TREE WAY
 5705 LONE TREE WAY
 ANTIPOCH, CA 94531

FSR#05122
 BUILDING TYPE (SIC): P13 SE MED
 RELEASE: 21 11
 PRINTED FOR
 ENTITLEMENT PACKAGE
 REVISION SCHEDULE
 NO. DATE DESCRIPTION

ENTITLEMENT PACKAGE
 CONSULTANT PROJECT # PH022-0188-00
 DATE: 09/22/2022
 DRAWN BY: JJA
 APPROVED: [Signature]
 ORDER POINT CANOPY
 SHEET NUMBER
 A-104

9/23/2022 12:35 PM BM 360/CAL_05122_Hwy 4 & Lone Tree Way FSU_2022_6_FSR05122_Hwy 4 & Lone Tree Way FSU_ARC.rvt
 10-SE-05122-A-105-OUTSIDE MEAL DELIVERY CANOPY



A2 OUTSIDE MEAL DELIVERY CANOPY REFLECTED CEILING PLAN
 1/4" = 1'-0"

A1 OUTSIDE MEAL DELIVERY CANOPY PLAN
 1/4" = 1'-0"



Chick-fil-A
 5200 Buffington Road
 Atlanta, Georgia
 30349-2998

WARE MALCOMB
 Leading Design for Commercial Real Estate

2777 E. Camelback Rd. Suite #325
 Phoenix, AZ 85016
 P 480.767.1001

CHICK-FIL-A
 HWY 4 & LONE TREE WAY FSU
 5705 LONE TREE WAY
 ANTIPOCH, CA 94531

FSR#05122
 BUILDING TYPE / DATE: P13 SE MED
 RELEASE: 21.11
 PRINTED FOR
 ENTITLEMENT PACKAGE
 REVISION SCHEDULE
 NO. DATE DESCRIPTION

ENTITLEMENT PACKAGE
 CONSULTANT PROJECT # PH022-0168-00
 DATE: 09/20/2022
 DRAWN BY: JJA
 I warrant that the information contained on this drawing and in all digital files associated with this drawing is true and correct to the best of my knowledge and belief, and that I am a duly licensed professional engineer in the State of California.
 OUTSIDE MEAL DELIVERY CANOPY
 SHEET NUMBER



Chick-fil-A
 Chick-fil-A
 5200 Buffington Road
 Atlanta, Georgia
 30349-2998

WARE MALCOMB
 Leading Design for Commercial Real Estate

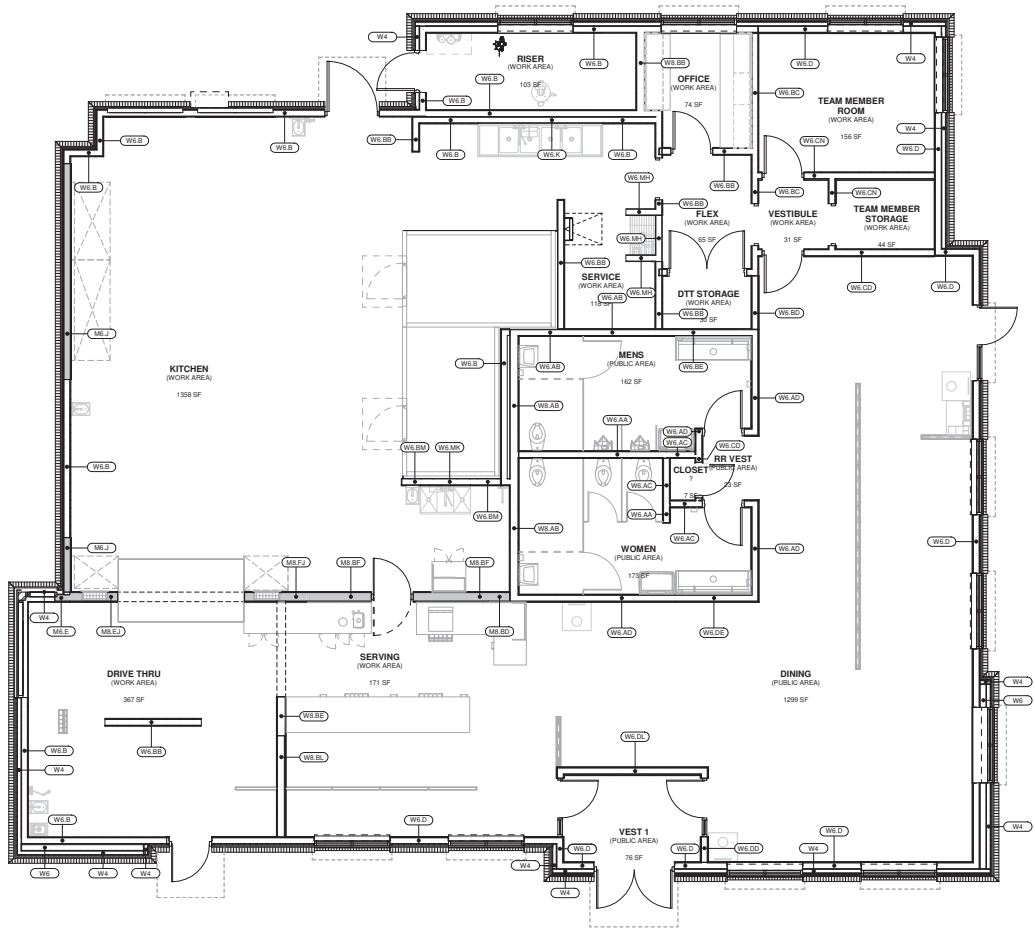
2777 E. Camelback Rd, Suite #325
 Phoenix, AZ 85016
 P 480.767.1001

CHICK-FIL-A
 HWY 4 & LONE TREE FSU
 5705 LONE TREE WAY
 ANTIPOCH, CA 94531

FSR#05122
 BUILDING TYPE (SIZE): P13 SE MED
 RELEASE: 21.11
 PRINTED FOR: ENTITLEMENT PACKAGE
 REVISION SCHEDULE
 NO. DATE DESCRIPTION

ENTITLEMENT PACKAGE
 CONSULTANT PROJECT # PH022 01 88 00
 DATE: 09/20/2023
 DRAWN BY: J.M.A.
 CHECKED BY: J.M.A.
 APPROVED BY: J.M.A.
 FLOOR PLAN

A-201



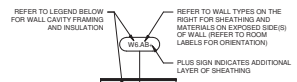
FLOOR PLAN LEGEND:
 CT CABINET
 RE ELECTRICAL
 MOP RE ELECTRICAL
 STEEL WALL BY OWNER RE OWNER FOR EXACT LOCATIONS
 ITEM BY OWNER
 SOFFIT OR BULKHEAD ABOVE RE REFLECTED CEILING PLAN
 2 SIDED BRAND ICON RE OWNER DRAWINGS
 RECESSED PAN AND SLEEVE BOX RE AA620 & ME8 DRAWINGS
 ELECTRICAL PANEL RE ELECTRICAL

INSULATION SCHEDULE		
LOCATION	R-VALUE	THICKNESS
ROOF	R-17.4	3" RIGID
WALL (CONTIGUOUS)	R-5	1" RIGID
WALL (CAVITY)	R-19	6" BATT
SLAB	R-10	2" RIGID

NOTES:
 1. REFER TO FLOOR PLAN AND WALL SECTION SHEETS FOR INSULATION EXTENTS AND LOCATIONS.
 2. REFER TO SPECIFICATIONS FOR INSULATION PRODUCT INFORMATION.

FLOOR PLAN GENERAL NOTES
 A.1 ALL DIMENSIONS SHOWN ARE FRAMING DIMENSIONS (FACE OF STUDUAMB) UNLESS OTHERWISE NOTED.
 A.2 FASTENERS, ANCHORS, CLIPS, STRAPS, ETC WHICH ARE IN CONTACT WITH PRESERVATIVE AND/OR FIRE TREATED WOOD SHALL BE OF 0-186 HOT DIPPED ZINC COATED GALVANIZED STEEL, STAINLESS STEEL, OR AN APPROVED EQUAL.
 A.3 REFER TO CIVIL AND LANDSCAPE FOR LOCATIONS OF WALLS, BOLLARDS, LANDSCAPING AREAS, FLAG POLE, AND OTHER SITE ITEMS.
 A.4 REFER TO INTERIOR ELEVATIONS FOR LOCATIONS AND TYPES OF CORNER GUARDS.
 A.5 CONTRACTOR TO COORDINATE LOCATION OF POLE MOUNTED EXTERIOR CAMERA WITH STRONG SISTER AND INSTALL UNDERGROUND CONDUIT AS REQUIRED. RE ELECTRICAL.
 A.6 SPECIFICATIONS, CONTACT OWNER FOR SEATING LAYOUT & SPECIFICATIONS.
 A.7 REFER TO ACCESSIBILITY PLAN AND OWNER DRAWINGS FOR CONDIMENT COUNTERS AND TRASH RESEPTIBLES.
 A.8 REFER TO IT WALLBOARD USER GUIDE FOR WALLBOARD INSTALLATION, IF APPLICABLE.
 A.9 REFER TO MILLWORK PLAN FOR RAISED CONCRETE CURB LOCATIONS.
 A.10 FREEZER AND COOLER DOORS AND HARDWARE SUPPLIED BY FREEZER COOLER MANUFACTURER.

B1 FLOOR PLAN
 1/8" = 1'-0"



BRACE INTERIOR PARTITIONS AS REQUIRED FOR COMPLIANCE WITH LOCAL BUILDING CODE. REFER TO REFLECTED CEILING PLAN FOR DRAFTSTOPPING PARTITION LOCATIONS THAT EXTEND TO CEILING.

WOOD STUD WALL	
W4	2x4 WOOD STUDS
W5	2x6 WOOD STUDS
W6	2x8 WOOD STUDS

METAL STUD WALL	
M4	3/8" METAL STUDS
M6	6" METAL STUDS
M8	8" METAL STUDS

BATT INSULATION

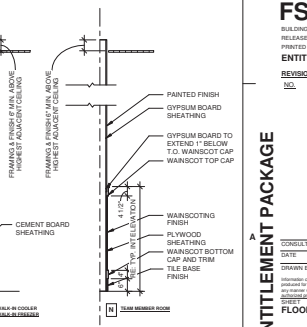
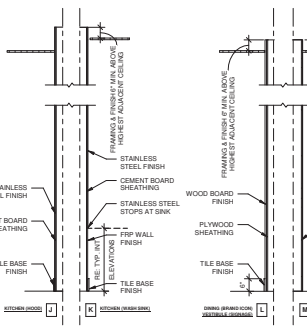
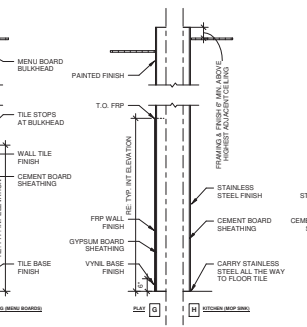
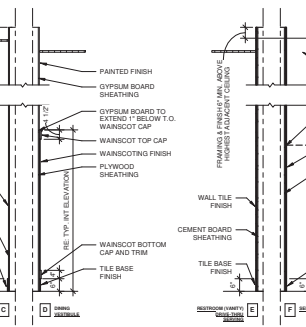
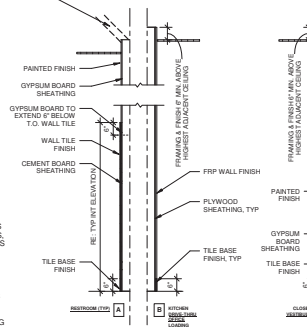
NOTE 1: WALL BLOCKING SHALL BE THE GENERAL CONTRACTOR'S RESPONSIBILITY. BLOCKING SHALL INCLUDE BUT IS NOT LIMITED TO: AREAS INDICATED ON INTERIOR ELEVATIONS FOR GRAB BARS, SHELVING BRACKETS, MONITORS, FIXTURES, ETC. AS WELL AS BLOCKING FOR WINDOWS, CANOPIES ROOF FRAMING, ROOF TOP UNITS, ETC.

NOTE 2: REFER TO STRUCTURAL DRAWINGS AND WALL SECTIONS FOR EXTERIOR WALL CONSTRUCTION.

NOTE 3: REFER TO FINISH PLAN FOR WALL FINISH INFO AND SPECIFICATIONS FOR WALL SHEATHING INFO.

NOTE 4: GENERAL CONTRACTOR TO PROVIDE AND/OR VERIFY FIRE BLOCKING AT 10 MAX VERTICAL SPACING AND AT CEILING HEIGHT IN ALL COMBUSTIBLE STUD WALLS, ACCORDING TO LOCAL CODE REQUIREMENTS.

WALL TYPES LEGEND
 N.T.S.



9/20/2023 12:37:39 PM
 BIM 360://CA_05122_Hwy 4 & Lone Tree Way FSU_2023_6_FSR#05122_Hwy 4 & Lone Tree Way FSU_ARC.rvt
 10-SE-05122-A-201-FLOOR PLAN



Chick-fil-A
5200 Buffington Road
Atlanta, Georgia
30349-2998

WARE MALCOMB
Leading Design for Commercial Real Estate

2777 E. Camelback Rd, Suite #325
Phoenix, AZ, 85016
P 480.767.1001

CHICK-FIL-A
HWY 4 & LONE TREE WAY
5705 LONE TREE WAY
ANTIOCH, CA 94531

FSR#05122

BUILDING TYPE: (DATE: P13 SE MED
RELEASE: 21.11)

PRINTED FOR
ENTITLEMENT PACKAGE

REVISION SCHEDULE
NO. DATE DESCRIPTION

CONSULTANT PROJECT # PH022-0168-00

DATE: 09/20/2022

DRAWN BY: JMA

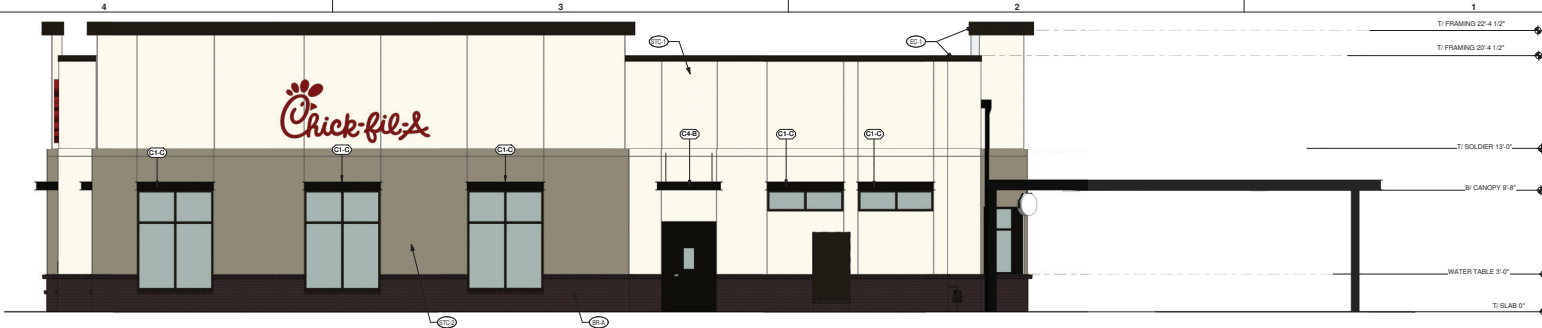
Approved on this drawing and all digital files
indicated by their registration key and signature in
this document. No other information or other content has
been added, modified, or deleted.

EXTERIOR ELEVATIONS
(COLOR)

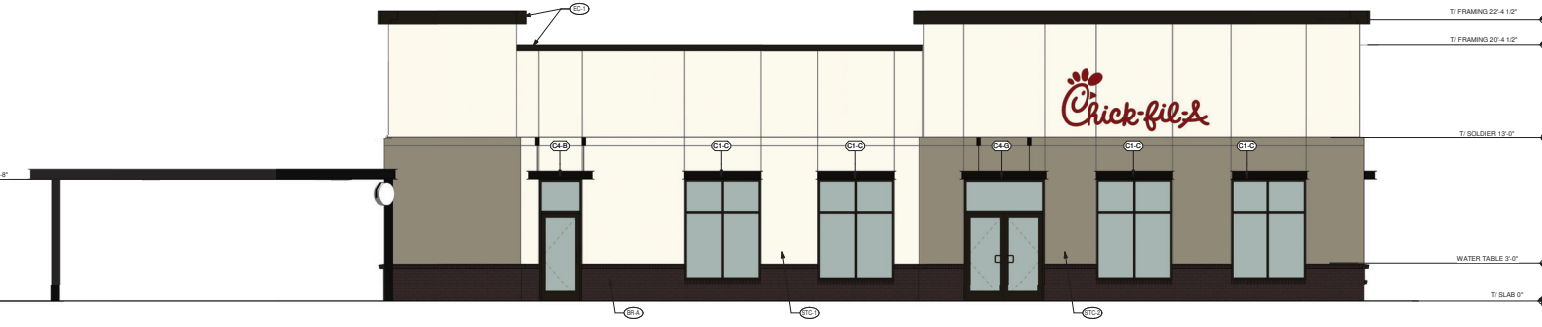
ENTITLEMENT PACKAGE

STREET NUMBER

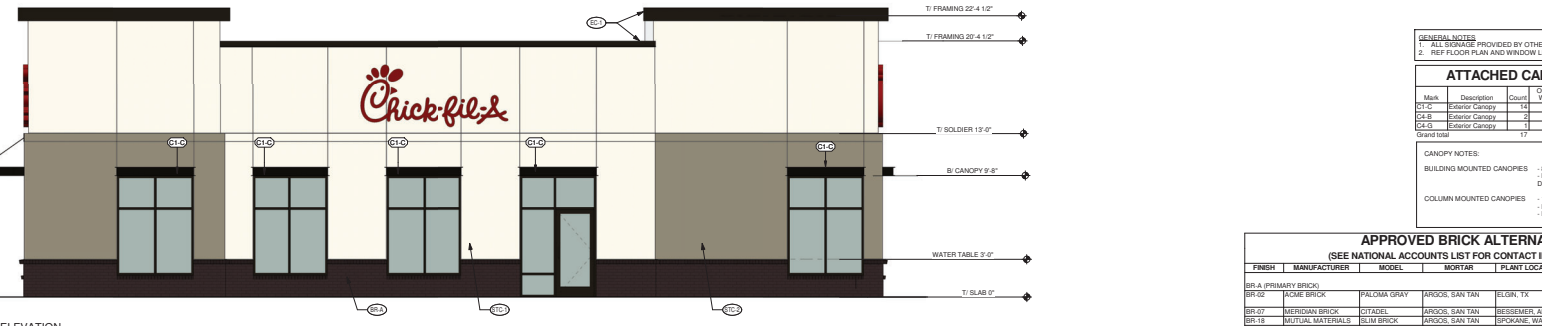
A-301



1 EXTERIOR ELEVATION - NORTH
1/4" = 1'-0"



2 EXTERIOR ELEVATION - SOUTH
1/4" = 1'-0"



3 EXTERIOR ELEVATION
1/4" = 1'-0"



4 EXTERIOR ELEVATION
1/4" = 1'-0"

GENERAL NOTES:
1. ALL SOURCE PROVIDED BY OTHERS
2. REF FLOOR PLAN AND WINDOW LEGEND FOR STOREFRONT INFORMATION

ATTACHED CANOPY SCHEDULE

Mark	Description	Color	Overall Width	Overall Depth	To Back Mounting (Offset From Top)	Integral Light/Fix
CT-C	Exterior Canopy	14	6'-4"	1'-0"	0"	No
CT-B	Exterior Canopy	2	6'-4"	4'-0"	2'-4"	Yes
CT-D	Exterior Canopy	1	7'-0"	4'-0"	2'-4"	Yes
Grand Total		17				

CANOPY NOTES:
BUILDING MOUNTED CANOPIES - 8" THICK CANOPY FINISH OF STRUCTURE, FASCIA & DECKING TO MATCH (C1)
COLUMN MOUNTED CANOPIES - 10" THICK CANOPY FINISH OF STRUCTURE TO BE (C2) FINISH OF DECKING TO BE (C3)

APPROVED BRICK ALTERNATES
(SEE NATIONAL ACCOUNTS LIST FOR CONTACT INFORMATION)

FINISH	MANUFACTURER	MODEL	MORTAR	PLANT LOCATION	PREFERRED REGIONS
BR-A	PRIMARY BRICK				
BR-02	ACME BRICK	PALOMA GRAY	ARJOS, SAN TAN	ELGIN, TX	SOUTHEAST, ATLANTIC, NORTHEAST, WEST
BR-22	MERIDIAN BRICK	CITADEL	ARJOS, SAN TAN	REISEMER, AL	ALL
BR-18	NATURE MATERIALS	SUN BRICK	ARJOS, SAN TAN	EPKORNE, WA	WEST
BR-20	GLENNERY	POWELL MATY	ARJOS, SAN TAN	HARRIS, PA	SOUTHEAST, ATLANTIC, NORTHEAST

FINISH SCHEDULE - EXTERIOR

MARK	DESCRIPTION	MANUFACTURER	MODEL NAME	MODEL NUMBER	COLOR	NOTE
BR-A	BRICK, VENEER (PRIMARY)		SUN BRICK		WINDBERT SKY	(SEE APPROVED BRICK ALTERNATES)
SP-1	CANOPY METAL FASCIA		SUBA CYCAT	OCT05/2003	BLACK BRONZE	OIL RUBBER BRONZE METALLIC TEXTURE PVD
SP-2	CANOPY METAL DECK				WHITE	SMOOTH WHITE, HIGH GLOSS
SC-1	PARAPET WALL		EPOXYLAST		BROWN/SLATE BRONZE	
SC-2	COPING		EXCEPTIONAL METALS		BLACK BRONZE MATTE	
ST-1	STOREFRONT BRICK		YES 4E			
STC-1	STUCCO		STO		POWERWALL	WESTRIGHLAND WHITE FINISH: SAND MEDIUM
STC-2	STUCCO		STO		POWERWALL	HARDWARE FINISH: SAND MEDIUM

LEGEND

CT-C EXPANSION JOINT COLOR: WESTRIGHLAND WHITE 400766	CT-D EXPANSION JOINT SEALANT COLOR TO MATCH MORTAR COLOR	CT-E COPPER SEE A2 (A-50)	CT-F DOWNSPOUT SEE A3 (A-50)	CT-G C2D FILL BOX - RE: KITCHEN
CT-H EXPANSION JOINT COLOR: WESTRIGHLAND WHITE 400766	CT-I CARD READER BY VENDOR - RE: ELEC	CT-J MOR RE: ELECTRICAL	CT-K LIGHT FIXTURE - RE: ELECTRICAL	CT-L CT CABINET SEE A3 (A-50) RE: ELECTRICAL

9/22/2022 2:28:22 PM BM 360/COA_05122_Hwy 4 & Lone Tree Way FSU_A301_Ext Exterior Elevations (COLOR)
 10-SE-05122-A-301-EXTERIOR ELEVATIONS (COLOR)



PERSPECTIVE VIEW



PERSPECTIVE VIEW



PERSPECTIVE VIEW



PERSPECTIVE VIEW



Chick-fil-A

Chick-fil-A
5200 Buffington Road
Atlanta, Georgia
30349-2998

WARE MALCOMB
Leading Design for Commercial Real Estate

2777 E. Camelback Rd, Suite #325
PHOENIX, AZ, 85016
P 480.767.1001

CHICK-FIL-A
HWY 4 & LONE TREE FSU
5705 LONE TREE WAY
ANTIOCH, CA 94531

FSR#05122

BUILDING TYPE / SIZE: P13 SE MED
RELEASE: 21.11
PRINTED FOR:
ENTITLEMENT PACKAGE
REVISION SCHEDULE

NO.	DATE	DESCRIPTION

ENTITLEMENT PACKAGE

CONSULTANT PROJECT # PH022-0168-00

DATE: 09/20/2023

DRAWN BY: J.S.A.

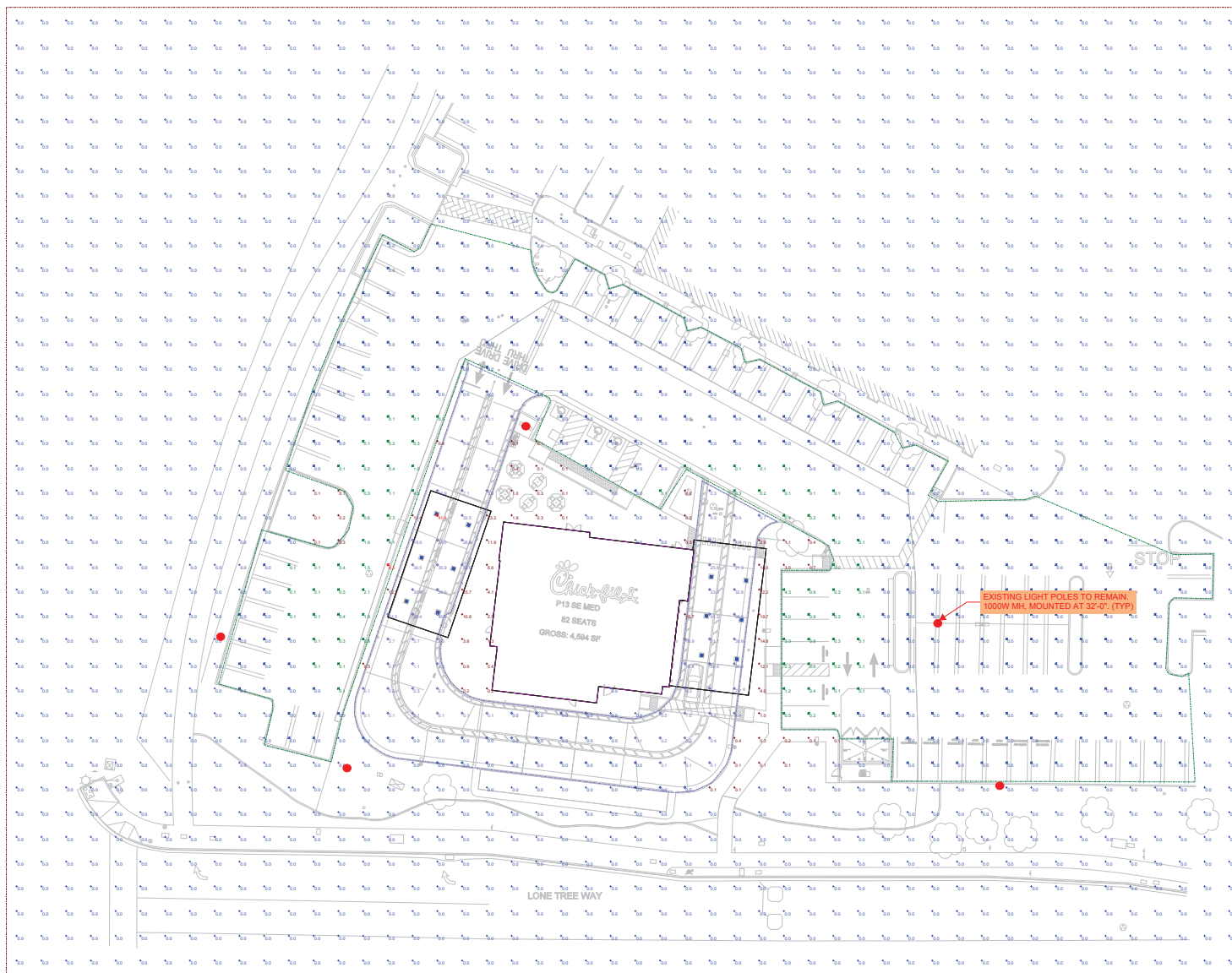
REVISIONS: 01

DESCRIPTION: EXTERIOR PERSPECTIVES

EXTERIOR PERSPECTIVES

STREET NUMBER:

A-302



Plan View
Scale: 1" = 20'

Quantity	Description	Unit	Material	Notes
22				

Statistics					
Description	Symbol	Avg	Max	Min	Max/Min Avg/Min
Drive-thru Lanes	◇	8.0 fc	41.4 fc	0.0 fc	N/A N/A

CHICK-FIL-A #05122
5705 LONE TREE WAY - ANTIPOCHI, CA 94531

REVIEW SET
ONLY NOT FOR
CONSTRUCTION

Designer
Date 09/21/2022
Scale AS NOTED
Drawing No. ES_0
Summary

PRESENTED TO



Chick-Fil-A #5122 Hwy 4 & Lone Tree Way FSU
5705 Lone Tree Way, Antioch, CA 94531



National Sign & Marketing Corporation

GOVERNING CODES:
2019 California Building Code
2019 California Fire Codes
2019 California Mechanical Codes
2019 California Electrical Codes
2019 California Energy Conservation Codes

DRAWING #29815R1

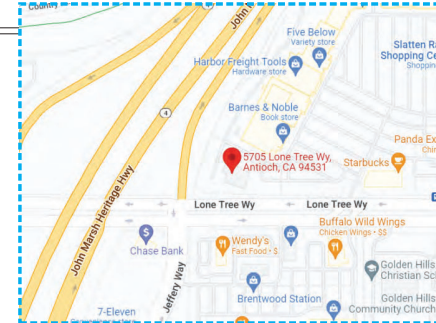
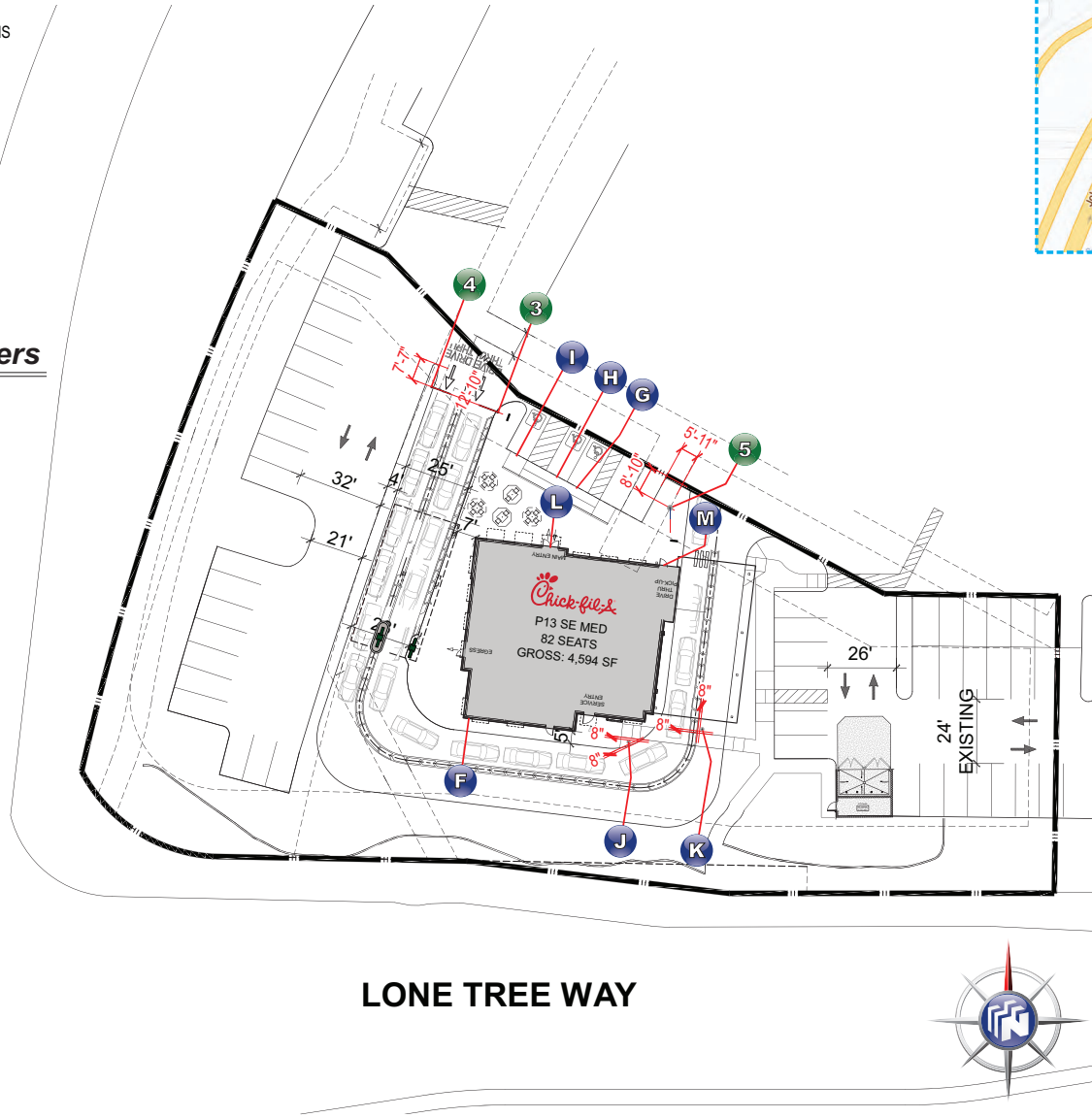
13580 5th Street • Chino, CA 91710 • Tel: 909.591.4742 • FAX: 909.747.6446 • Toll Free: 877.877.NSMC

SCOPE OF WORK

- F** NEW SINTRA ADDRESS NUMERALS
- G H I** NEW HANDICAP PARKING SIGNS
- J K** NEW PEDESTRIAN SIGN
- L** NEW STORE HOURS VINYL
- M** NEW TEAM MEMBER ENTRANCE VINYL

Install Only Manufacturing By Others

- 3 4** DRIVE-THRU CLEARANCE ARM
- 5** FLAG POLE



VICINITY MAP

SIGN ID LETTER	FACE A	FACE B
F	5705	N/A
H		N/A
I G		N/A
J		
K		
L	FACE A & C 5705	N/A
M	Team Member Entrance	N/A
3		N/A
4		N/A
5		N/A

National Sign & Marketing Corporation
 13580 So. St. Chino, CA 91710
 Tel: 909.591.4742 Fax: 909.747.6446
 e-mail: sales@nsmc.com
 Lic# 745030 - Exp. 01/31/24

Project Name:
 Chick-Fil-A #5122
 Hwy 4 & Lone Tree Way FSU

Address:
 5705 Lone Tree Way,
 Antioch, CA 94531

Account Mgr.
 Steve Rosenbloom

Approved by:

Date:

Drawing Number
29815R1

Revision

NO.	DATE	DESCRIPTION
08/28/22	RL	Relocate flag pole.

Designer: Date:
 R. Luna 09/23/2022

SITE PLAN

Scale: Page 2
 1" = 40'-0"

THIS IS AN ORIGINAL UNPUBLISHED DRAWING CREATED FOR YOUR PERSONAL USE IN CONNECTION WITH A PROJECT PLANNED FOR YOU BY NSMC. IT IS NOT TO BE SHOWN OUTSIDE YOUR ORGANIZATION NOR USED, REPRODUCED, COPIED OR EXHIBITED IN ANY FASHION UNLESS AUTHORIZED IN WRITING BY AN OFFICER OF NSMC.

This sign intended to be in accordance with the requirements of Article 600 of the National Electrical Code and/or other applicable local codes. This includes proper grounding and bonding of this sign.

VESCO
 ELECTRONIC SIGNS

8"

5705

ADDRESS APPLIED
FIRST SURFACE

Do not cut gray background
for illustration only

3'-5 1/4"

5 1/2"

2 1/2"

1"

3/4"

3/4"

7 1/4"

3/4"

3/4"

7 1/4"

1"

3/4"

6 1/2"

1"

1'-1"

3/4"

3/4"


1'-4 1/2"

SERVING HOURS

DINING ROOM
MON-SAT 7:00AM - 9:00PM

DRIVE-THRU
MON-SAT 7:00AM - 9:00PM

CLOSED SUNDAY



SMOKE FREE PROPERTY
NO SOLICITING

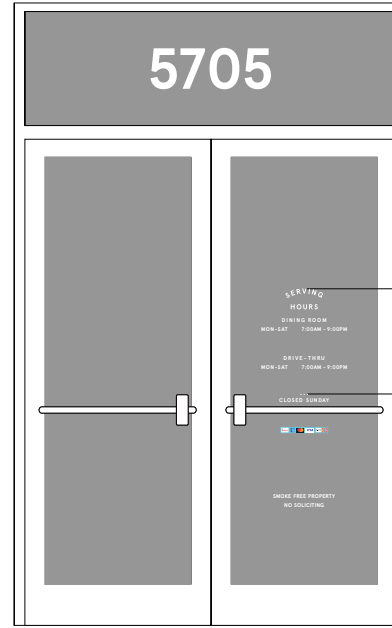
DINING HOURS APPLIED
SECOND SURFACE

Light blue are cut lines only should
not show in final installation

Credit Card icons should be individually
cut out, printed on clear substrate

Do not print gray background
for illustration only

STORE HOURS TO BE VERIFIED



DOUBLE DOOR LAYOUT

5'-5"

3'-8 5/8"

L NEW STORE HOURS VINYL

Sign Specs:

STORE HOURS: WHITE VINYL AND DIGITALLY PRINTED VINYL APPLIED TO APPROPRIATE SURFACE

Colors:

3M 7725-10 OPAQUE WHITE



National Sign & Marketing Corporation
13580 5th St., Chino, CA 91710
Tel 909.591.4742 Fax 909.747.6446
Email: sales@nsmc.com
Lic# 745030 - Exp. 01/31/24

Project Name:

Chick-Fil-A #5122
Hwy 4 & Lone Tree Way FSU

Address:

5705 Lone Tree Way,
Antioch, CA 94531

Account Mgr.

Steve Rosenbloom

Approved by:

Date:

Drawing Number

29815R1

Revision

09/28/22 RL - Relocate flag pole.

Designer:

R. Luna

Date:

09/23/2022

**STORE/DRIVE THRU
HOURS VINYL
1 LINE SCHEDULE**

Scale: Page 15

1 1/2" = 1'-0"

THIS IS AN ORIGINAL UNPUBLISHED DRAWING CREATED FOR YOUR PERSONAL USE IN CONNECTION WITH A PROJECT PLANNED FOR YOU BY NSMC. IT IS NOT TO BE SHOWN OUTSIDE YOUR ORGANIZATION NOR USED, REPRODUCED, COPIED OR EXHIBITED IN ANY FASHION UNLESS AUTHORIZED IN WRITING BY AN OFFICER OF NSMC.

This sign intended to be in accordance with the requirements of Article 600 of the National Electrical Code and/or other applicable local codes. This includes proper grounding and bonding of this sign.



