

**TENANT
IMPROVEMENT**

PARCEL NO: 074-051-005

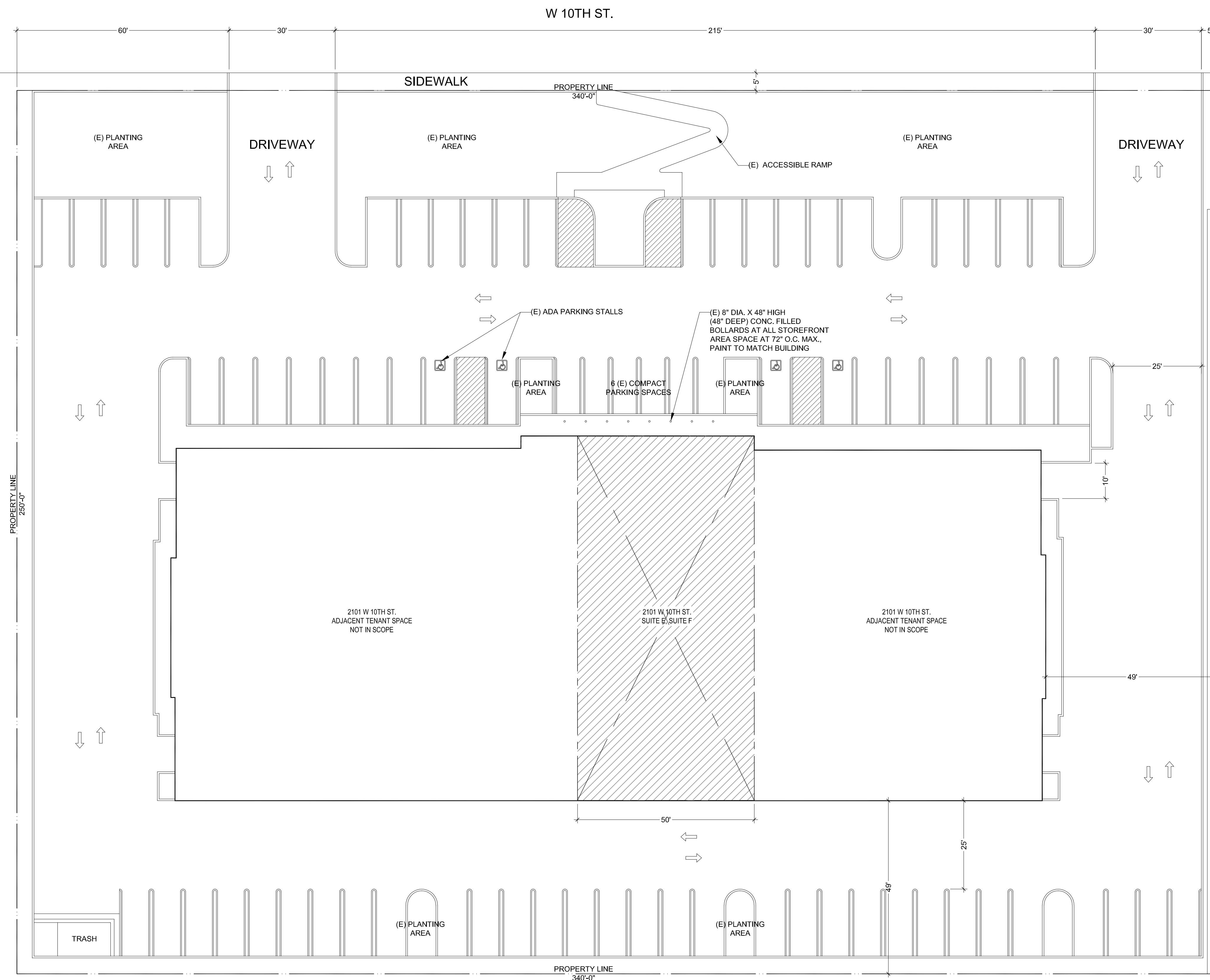
2101 W 10TH ST., SUITE E, F
ANTIOCH, CA 94509

DRAWING SUBMITTAL SCHEDULE
2021.07.27 USE PERMIT SUBMITTAL

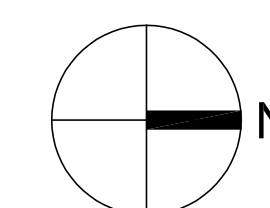
PROJECT NO: -

SITE PLAN

A-101

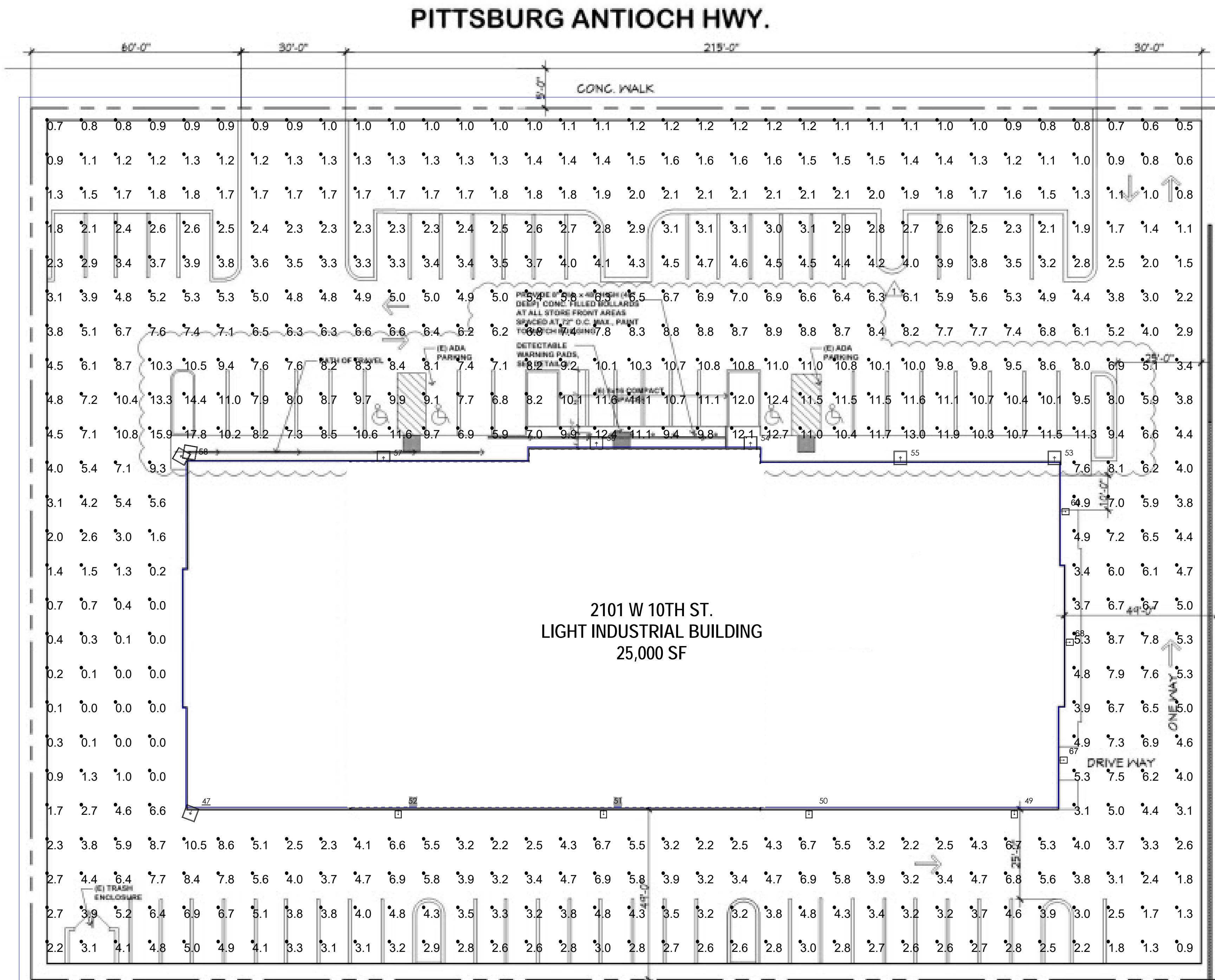


1 SITE PLAN
SCALE: 1/16"=1'-0"



Luminaire Schedule						
Symbol	Qty	Model Number	Arrangement	Lumens	LLF	Description
☐	6	ALED4T260SF-D10	SINGLE	31249	1.000	260 Watt LED Wall Mount w/ 5000K Color Temp (Mounted at 25'-0)
☐	7	ALED4T110SF-D10	SINGLE	13680	1.000	110 Watt LED Wall Mount w/ 5000K Color Temp (Mounted at 25'-0)
☐	1	ALED4T260SF-T70	TWIN 70 DEGREE	31249	1.000	(2) 260 Watt LED Wall Mount w/ 5000K Color Temp (Mounted at 25'-0)

Calculation Summary							
Label	CalcType	Units	Avg	Max	Min	Avg/Min	Max/Min
Parking	Illuminance	Fc	7.09	17.8	2.1	3.38	8.48
Rear Parking	Illuminance	Fc	4.21	10.5	2.2	1.91	4.77



PROJECT: Delta Business Park
 LOCATION: Antioch, CA
 CONTACT: Stephen C.
 DATE: 6/4/2021

Page Number:
 1

A-102

Ownership and copyright for all documents created by LED Spot hereunder shall remain the exclusive property of LED Spot. They are not to be used by the Owner or Client on other projects or on extensions of this project except by agreement in writing and with appropriate compensation to LED Spot. The lighting designer shall not be responsible for the means, methods, techniques, sequences, or procedures on construction or installation, or for the acts and omissions of the Client. This design is based on IES files that were lab tested or computer generated. This lighting design is based on information supplied by others. Changes in electrical supply, area geometry and/or objects within the lighted area may produce illumination values different from the predicted results shown on this layout.

FOR PURCHASING INFORMATION OF APPROVED EQUIPMENT SPECIFIED ON THIS PLAN CONTACT:

LED Spot
 8850 Jameel Road, Ste. 170A
 Houston, Texas 77040
 Email: info@ledspot.com
 Voice Number: 713-863-1184
 Fax Number: 713-979-1429

**TENANT
IMPROVEMENT**

PARCEL NO: 074-051-005

2101 W 10TH ST., SUITE E, F
ANTIOCH, CA 94509

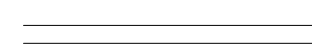

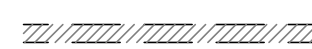
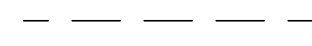
DRAWING SUBMITTAL SCHEDULE
2021.07.27 USE PERMIT SUBMITTAL

PROJECT NO: -

EXISTING FLOOR PLAN

A-201

WALL LEGEND

- (E) WALL TO REMAIN 
- (E) 1-HR RATED WALL
VERIFY IN FIELD 
- (E) WALL TO BE DEMOLISHED 
- (E) TO BE DEMOLISHED 

TENANT SPACE
SUITE G - N.I.C

TENANT SPACE
SUITE F - 2,500 SF
TO BE RENOVATED

TENANT SPACE
SUITE E - 2,500 SF
TO BE RENOVATED

TENANT SPACE
SUITE D - N.I.C

(E) ELEC. PANEL
250 AMP 3 PH.

(E) ELEC. PANEL
250 AMP 3 PH.

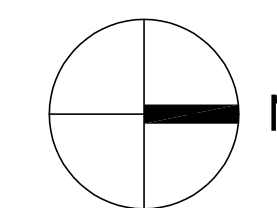
(E) PLANTING
AREA

(E) 8" DIA. X 48" HIGH
(48" DEEP) CONC. FILLED
BOLLARDS AT ALL STOREFRONT
AREA SPACE AT 72" O.C. MAX.,
PAINT TO MATCH BUILDING

6 (E) COMPACT
PARKING SPACES

6 COMPACT PARKING
8'-6" X 16'-0"



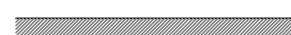
(E) PLANTING
AREA



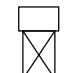
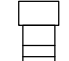
TENANT IMPROVEMENT

PROPOSED FLOOR PLAN

WALL LEGEND:

- (E) WALL TO REMAIN 
- (E) 1-HR RATED WALL
VERIFY IN FIELD 
- (N) WALL 

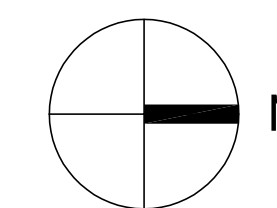
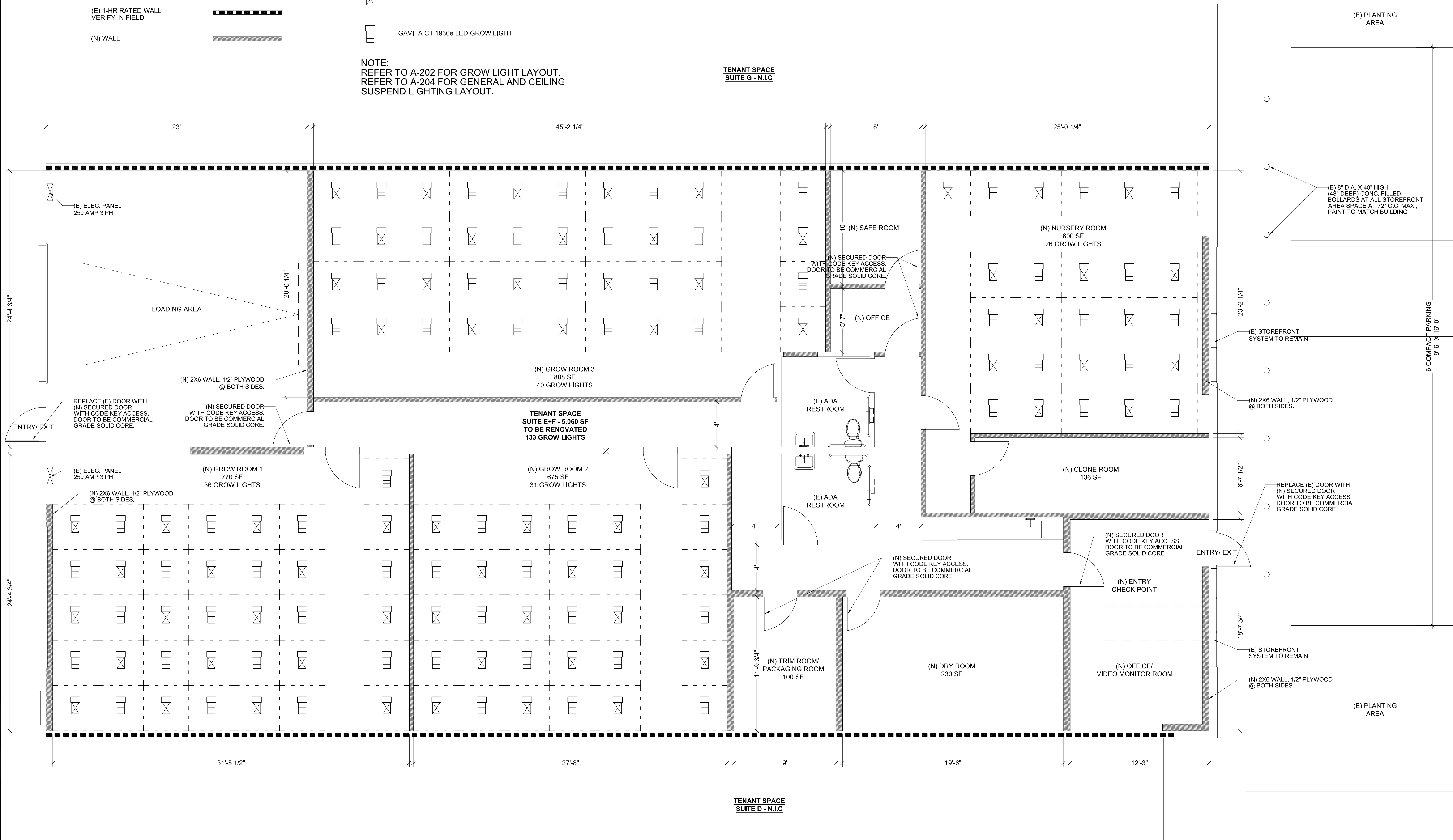
LIGHTING LEGEND:

-  LUX-DE100-277-M19 GROW LIGHT
-  GAVITA CT 1930e LED GROW LIGHT

NOTE:
 REFER TO A-202 FOR GROW LIGHT LAYOUT.
 REFER TO A-204 FOR GENERAL AND CEILING
 SUSPEND LIGHTING LAYOUT.

TENANT SPACE
 SUITE G - N.I.C

TENANT SPACE
 SUITE D - N.I.C



**TENANT
IMPROVEMENT**

PARCEL NO: 074-051-005

2101 W 10TH ST., SUITE E, F
ANTIOCH, CA 94509

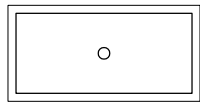
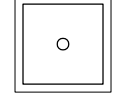
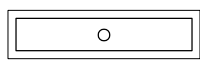
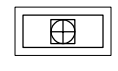
DRAWING SUBMITTAL SCHEDULE
2021.07.27 USE PERMIT SUBMITTAL




PROJECT NO: -

**PROPOSED LIGHTING
PLAN**

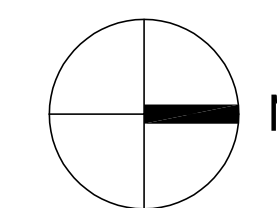
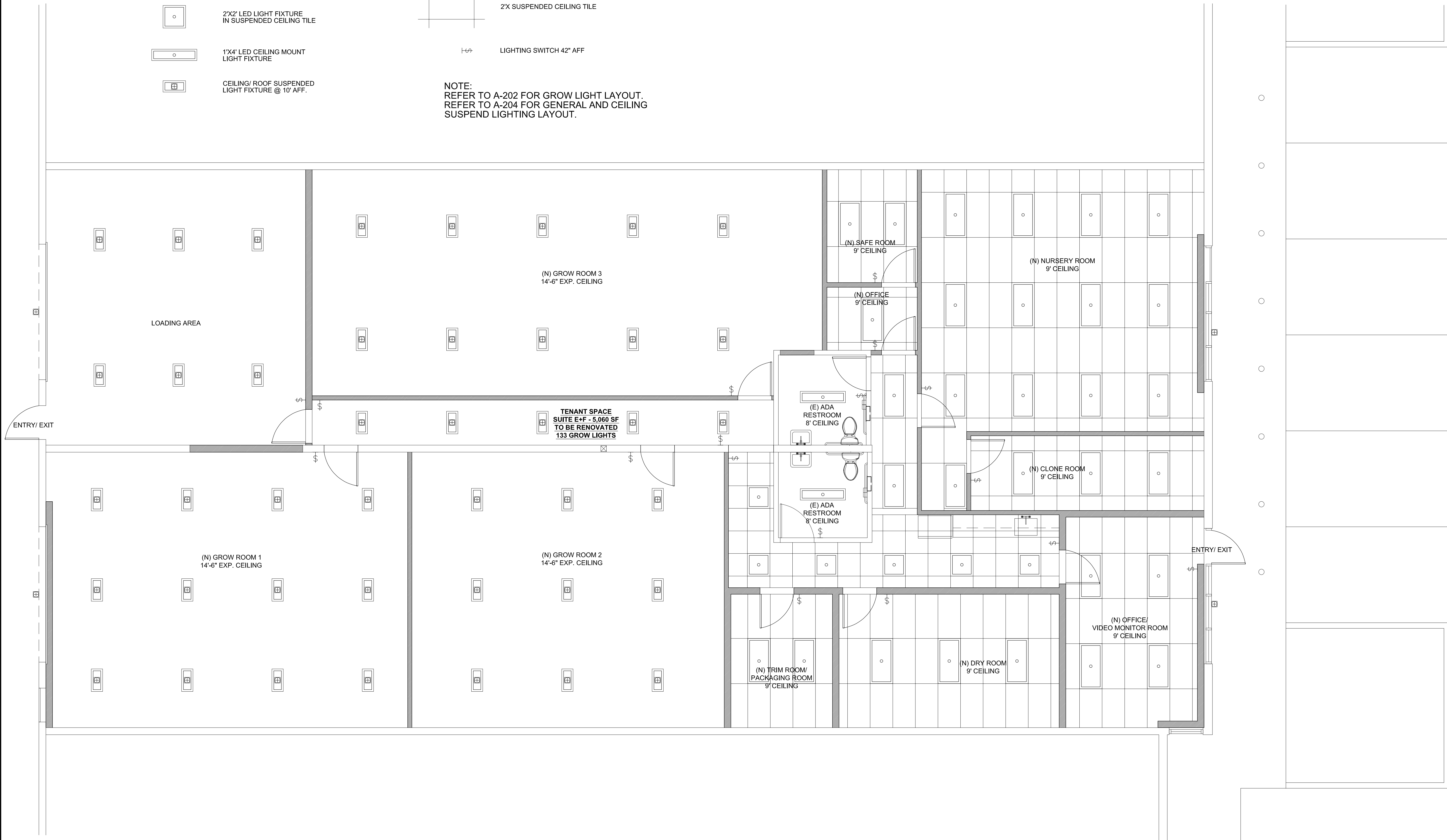
A-204

CEILING LEGEND:

-  2'X4' LED LIGHT FIXTURE
IN SUSPENDED CEILING TILE
-  2'X2' LED LIGHT FIXTURE
IN SUSPENDED CEILING TILE
-  1'X4' LED CEILING MOUNT
LIGHT FIXTURE
-  CEILING/ ROOF SUSPENDED
LIGHT FIXTURE @ 10' AFF.

-  WALL MOUNT EXTERIOR LIGHT FIXTURE
@ 12' AFF. EQUIP W/ DAYLIGHT SENSOR
-  2'X SUSPENDED CEILING TILE
-  LIGHTING SWITCH 42" AFF

NOTE:
REFER TO A-202 FOR GROW LIGHT LAYOUT.
REFER TO A-204 FOR GENERAL AND CEILING
SUSPEND LIGHTING LAYOUT.



TENANT
IMPROVEMENT

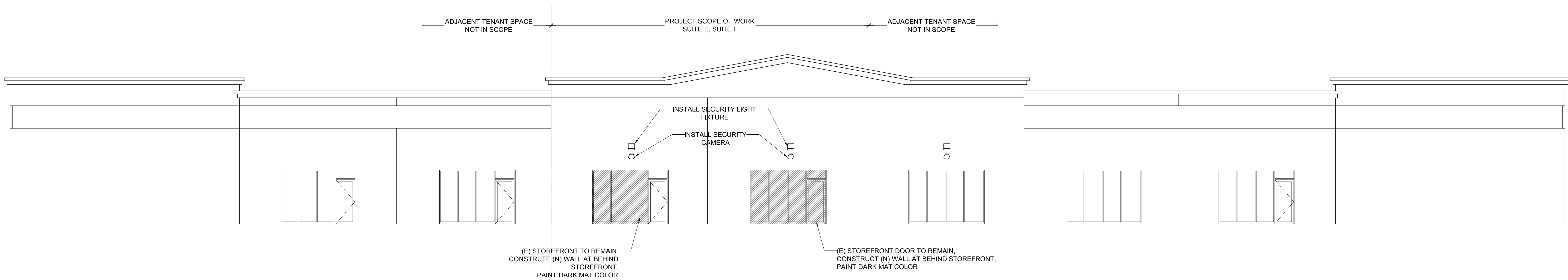
PARCEL NO: 074-051-005

2101 W 10TH ST., SUITE E, F
ANTIOCH, CA 94509

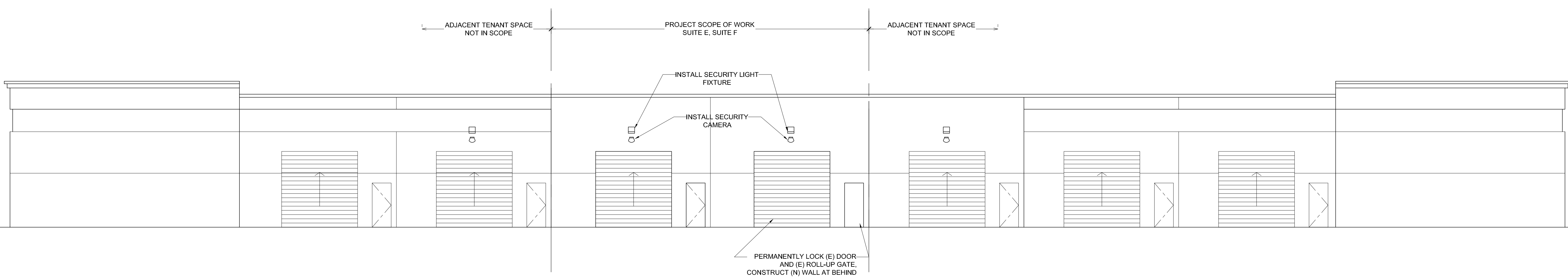
DRAWING SUBMITTAL SCHEDULE
2021.07.27 USE PERMIT SUBMITTAL

PROJECT NO: -

EXTERIOR ELEVATIONS



2 PROPOSED FRONT (NORTH) ELEVATION
SCALE: 1/8"=1'-0"



1 PROPOSED REAR (SOUTH) ELEVATION
SCALE: 1/8"=1'-0"