

## **PARKS & RECREATION COMMISSION MEETING**

**Council Chambers  
200 H Street  
Antioch, CA 94509**

**Thursday  
February 21, 2019  
7:00 p.m.**

### **AGENDA**

**I. CALL TO ORDER**

**II. PLEDGE OF ALLEGIANCE**

**III. ROLL CALL**

**IV. PUBLIC COMMENTS**

Residents are given the opportunity to address the Commission on Park and Recreation issues not on the regular agenda.

**V. APPROVAL OF MINUTES**

Recommended Action:

1. Motion to approve annotated agenda minutes of the Parks and Recreation Commission meeting of January 17, 2019.

**VI. BUSINESS**

1. Playground Renovation at Chichibu, Jacobsen and Marchetti Parks:  
Recommendation to City Council
2. Resolution of Support for a Transportation Development Act Grant for the Mokelumne Trail Bicycle Path Improvements (P.W. 404-11)

**VII. COMMUNICATIONS (Announcements and Correspondence)**

1. Staff Communication
2. Commission Communication

**VIII. ADJOURNMENT**

*The meetings are accessible to those with disabilities. Auxiliary aides will be made available for persons with hearing or vision disabilities upon request in advance at (925) 779-7078 or TDD (925) 779-7081. Agenda and related writings provided to Commission members are available for viewing by the public during normal office hours at the Antioch Community Center, located at 4703 Lone Tree Way, Antioch, CA 94531, as well as at the Committee meeting. Individuals may view the agenda and related writings on the City of Antioch website: [www.ci.antioch.ca.us](http://www.ci.antioch.ca.us)*



## **PARKS & RECREATION COMMISSION MEETING**

**Council Chambers  
200 H Street  
Antioch, CA 94509**

**Thursday  
January 17, 2019  
7:00 p.m.**

### **ANNOTATED AGENDA**

#### **I. CALL TO ORDER**

*Call to Order by Chair McClelland at 7:15 pm*

#### **II. PLEDGE OF ALLEGIANCE**

*Chair McClelland led the Pledge of Allegiance*

#### **III. ROLL CALL**

*Commissioners Present: Eubanks, Foster, Knight, McClelland  
Commissioners Absent: Othman  
Staff Present: Nancy Kaiser, Parks and Recreation Director  
Wayne Burgess, Public Works Department*

#### **IV. PUBLIC COMMENTS**

Residents are given the opportunity to address the Commission on Park and Recreation issues not on the regular agenda.

*There were no public comments*

#### **V. APPROVAL OF MINUTES**

Recommended Action:

1. Motion to approve annotated agenda minutes of the Parks and Recreation Commission meeting of December 20, 2018.

*Motion to Approve Minutes for Meeting of December 20, 2018 4 Yes / 0 No*

#### **VI. BUSINESS**

1. Appointment of Commission Chair for 2019

*Motion to Appoint Rodney McClelland Chair for 2019 4 yes / 0 No*

2. Appointment of Commission Vice-Chair for 2019

*Motion to Appoint Beverly Knight Vice-Chair for 2019 4 yes / 0 No*

*The meetings are accessible to those with disabilities. Auxiliary aides will be made available for persons with hearing or vision disabilities upon request in advance at (925) 779-7078 or TDD (925) 779-7081. Agenda and related writings provided to Commission members are available for viewing by the public during normal office hours at the Antioch Community Center, located at 4703 Lone Tree Way, Antioch, CA 94531, as well as at the Committee meeting. Individuals may view the agenda and related writings on the City of Antioch website: [www.ci.antioch.ca.us](http://www.ci.antioch.ca.us)*

3. Adopt a 2019 Meeting Schedule

*Motion to Adopt a 2019 Meeting Schedule that includes monthly regular meetings on the third Thursday of the month; follows the Council schedule for recess when practical; and host up to three outdoor meetings.*

4 yes / 0 No

4. Discussion Regarding Placement of No Smoking Signs in Parks

*Staff provided an update to the Commission regarding the schedule for installing "no smoking" signs in parks. Current ordinances allow for the placement of signs to address health and safety standards. The Commission discussed locations for signs and came to consensus that playgrounds and picnic areas were priority locations to prohibit smoking. The following locations were noted as high priority: City Park, Harbor Park, Antioch Community Park, Hansen Park, Williamson Ranch Park, Prosserville Park, Contra Loma Estates, Prewett Park playground and Grand Plaza, Chichibu Park, Gentrytown Park, Jacobsen Park, Eagle Ridge Park, Marchetti Park.*

**VII. COMMUNICATIONS** (Announcements and Correspondence)

1. Staff Communication

*Public Works reported that staff was beginning to address pre-season tasks to prepare parks for the season and update features to meet standards. Thirty-two picnic tables will be upgraded or replaced and three new playgrounds will be renovated later this year.*

*Recreation staff noted that water park training classes have begun in preparation for the 2019 season and new classes are underway including cooking, pre-school and Jr. Warriors. The Senior Citizens Club installed their new Club officers. The MLK Day of Service is receiving positive support from the community and Commissioners were encouraged to participate.*

2. Commission Communication

*Commissioners inquired about the process for appointing citizens to fill the two vacancies and staff updated them. A request was made to invite East Bay Regional Park District to make a presentation to the Commission about their future plans in the region.*

**VIII. ADJOURNMENT**

*The meeting adjourned at 8:00pm*



## **STAFF REPORT TO THE PARKS AND RECREATION COMMISSION**

**DATE:** Regular Meeting of February 21, 2019

**TO:** Parks and Recreation Commission

**SUBMITTED BY:** Nancy Kaiser, Parks and Recreation Director  
Jon Blank, Public Works Director/City Engineer

**SUBJECT:** Review the Designs and Estimated Costs for Playground Renovation at Chichibu, Jacobsen and Marchetti Parks and Recommend the Project Development to Antioch's City Council

---

### **RECOMMENDED ACTION**

It is recommended that the Parks and Recreation Commission review and select a proposed playground design for the renovation of the playgrounds at Chichibu, Jacobsen and Marchetti Parks; and recommend the project developments to the City Council.

### **STRATEGIC PURPOSE**

Long Term Goal J: Parks and Recreation. Provide outstanding facilities and programs for the community.

- Strategy J-1: Increase the use of the City's recreation facilities
- Strategy J-4: Continue to focus on community enhancements

Long Term Goal K: Public Works & Engineering.

- Strategy K-1: Ensure well maintained public facilities, rights-of-ways and parks

### **DISCUSSION**

The City of Antioch Capital Improvement Program (CIP) includes funding each fiscal year for city wide park and facilities upgrades.

Staff has performed a citywide playground facility assessment and identified the top priorities as Chichibu Park and Jacobsen Park for playground replacements and Marchetti Park for playground enhancements. In recent years First 5 Contra Costa, a children and families commission, identified a priority list of Antioch parks for rehabilitation that is consistent with City staff's analysis. The following parks have received playground replacements in the last few years: Mira Vista Park, Contra Loma Estates Park and Prosserville Park.



Miracle Play Systems, a State of California Multiple Award Schedules (CMAS) approved vendor, provided design alternatives for consideration by the Parks and Recreation Commission. The recommendations are identified in Attachments A-C.

Following are the project costs per park; the detailed costs are included in Attachment D:

Chichibu Park, Longview Road	\$371,243
Jacobsen Park, Jacobsen Drive	\$246,382
Marchetti Park, Kendree Street	\$15,294

The City Council will consider park improvement options, including the Parks and Recreation Commission recommendations. The improvement schedule identifies Chichibu Park in Fiscal Year 2018/19 and Jacobsen Park and Marchetti Park on schedule for Fiscal Year 2019/20.

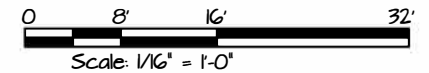
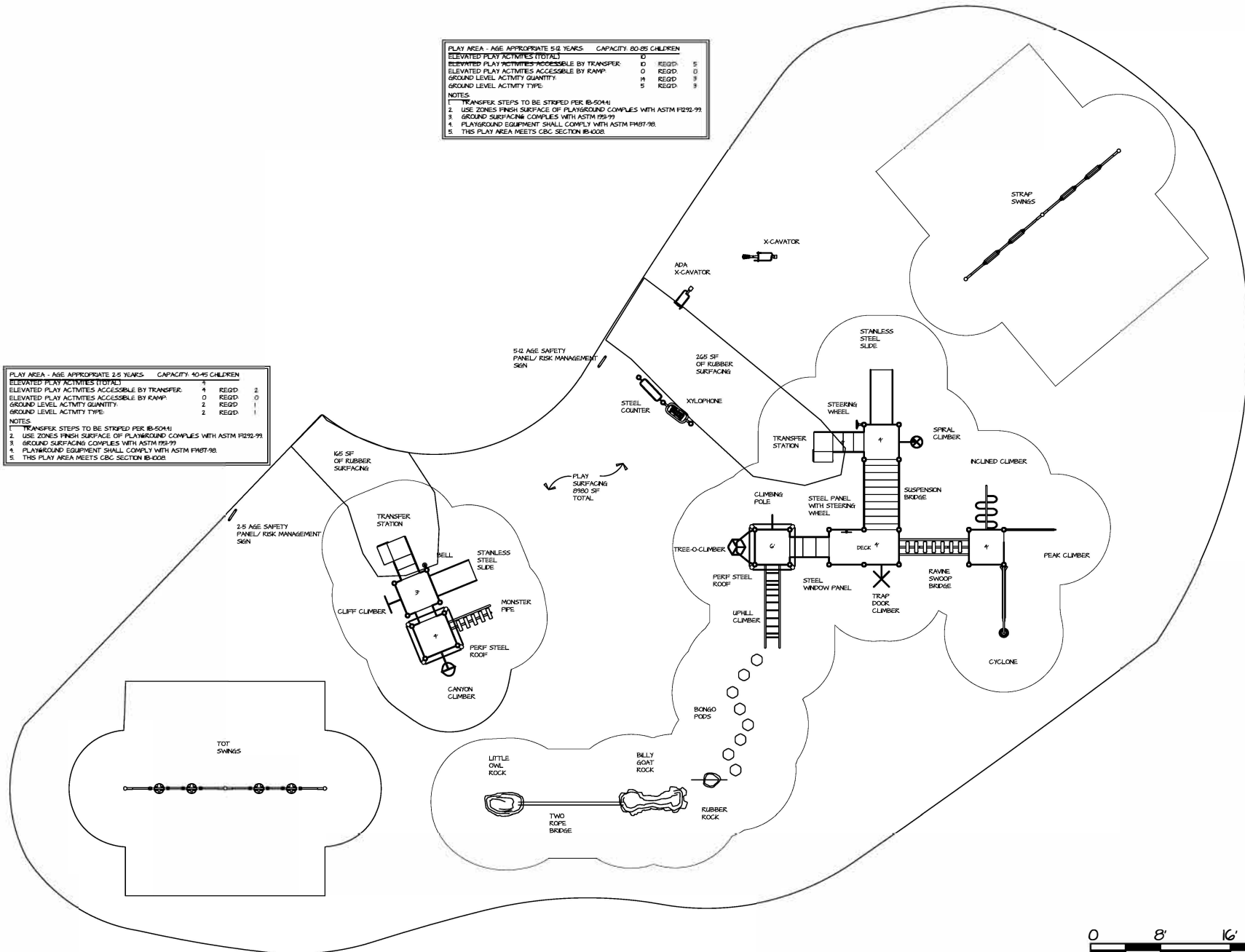
#### **ATTACHMENTS**

- A: Chichibu Park Site Plans & Concept Designs
- B: Jacobsen Park Site Plans & Concept Designs
- C: Marchetti Park Site Plan & Concept Design
- D: Miracle Play Systems Estimated Cost Summaries

# ATTACHMENT A

PLAY AREA - AGE APPROPRIATE 5-12 YEARS	CAPACITY: 80-85 CHILDREN
ELEVATED PLAY ACTIVITIES (TOTAL)	0 REGD: 5
ELEVATED PLAY ACTIVITIES ACCESSIBLE BY TRANSFER	0 REGD: 0
ELEVATED PLAY ACTIVITIES ACCESSIBLE BY RAMP	0 REGD: 3
GROUND LEVEL ACTIVITY QUANTITY	5 REGD: 3
GROUND LEVEL ACTIVITY TYPE	
NOTES:	
1. TRANSFER STEPS TO BE STORED PER 18-504.1	
2. USE ZONES FINISH SURFACE OF PLAYGROUND COMPLES WITH ASTM F1292-99	
3. GROUND SURFACING COMPLES WITH ASTM F195-99	
4. PLAYGROUND EQUIPMENT SHALL COMPLY WITH ASTM F1957-98	
5. THIS PLAY AREA MEETS CBC SECTION 18-4008	

PLAY AREA - AGE APPROPRIATE 2-5 YEARS	CAPACITY: 40-45 CHILDREN
ELEVATED PLAY ACTIVITIES (TOTAL)	4 REGD: 2
ELEVATED PLAY ACTIVITIES ACCESSIBLE BY TRANSFER	0 REGD: 0
ELEVATED PLAY ACTIVITIES ACCESSIBLE BY RAMP	2 REGD: 1
GROUND LEVEL ACTIVITY TYPE	
NOTES:	
1. TRANSFER STEPS TO BE STORED PER 18-504.1	
2. USE ZONES FINISH SURFACE OF PLAYGROUND COMPLES WITH ASTM F1292-99	
3. GROUND SURFACING COMPLES WITH ASTM F195-99	
4. PLAYGROUND EQUIPMENT SHALL COMPLY WITH ASTM F1957-98	
5. THIS PLAY AREA MEETS CBC SECTION 18-4008	



ALL DRAWINGS ARE SUBJECT TO CHANGE AND SHOULD BE REVIEWED BEFORE FINAL SALE. ALL SITE DIMENSIONS WILL NEED TO BE VERIFIED PRIOR TO SALE AND INSTALLATION.

LINEAR FEET:	LF
CRITICAL FALL HEIGHT:	8'
15_0051_chichibu_002	

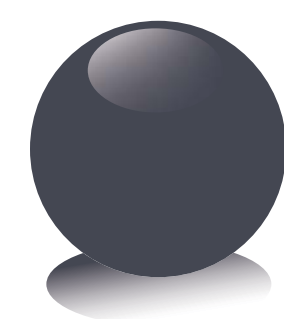
SITE AREA:	8980 SF
SCALE:	1/16" = 1'-0"
DRAWN BY:	DT
DATE:	10-16-18

Chichibu Park  
Antioch, CA.

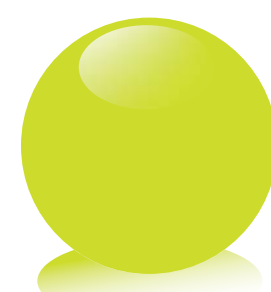




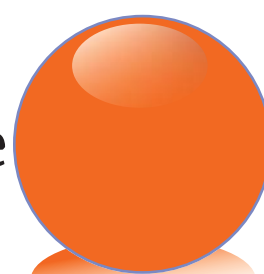
Colors Used In Rendering



Grey



Chartreuse



Orange



Green

## ChichiBu Park

Antioch, CA.

10/16/18

15\_0051\_ChichiBu\_002



CREATING FUN  
PLAY ENVIRONMENTS  
TO ENRICH COMMUNITIES





# ChichiBu Park

Antioch, CA.

10/16/18

15\_0051\_ChichiBu\_002

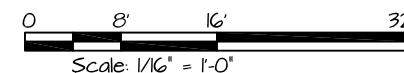
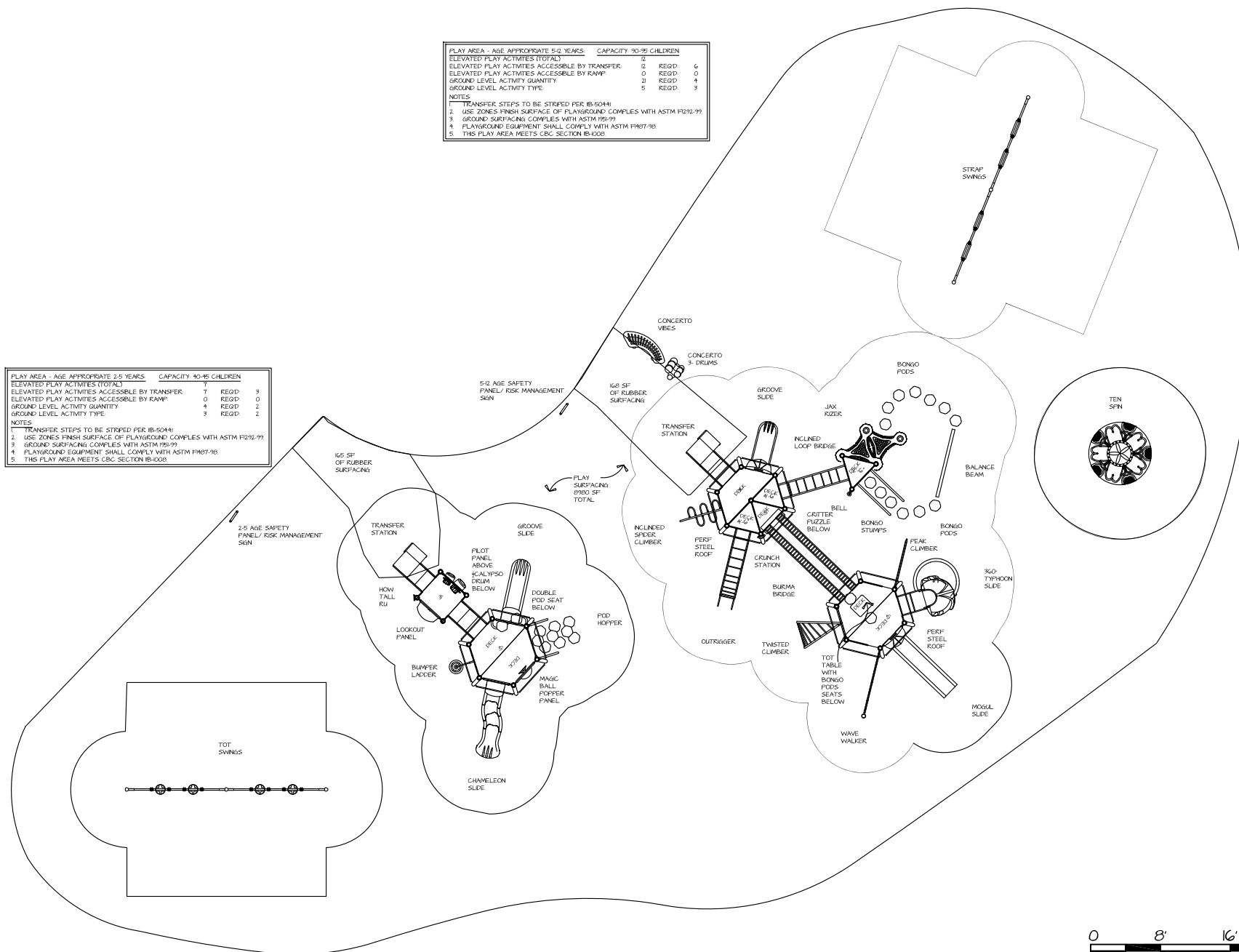


CREATING FUN  
PLAY ENVIRONMENTS  
TO ENRICH COMMUNITIES



PLAY AREA - AGE APPROPRIATE 5-12 YEARS	CAPACITY 10-15 CHILDREN
ELEVATED PLAY ACTIVITIES (TOTAL)	0 REGD. 6
ELEVATED PLAY ACTIVITIES ACCESSIBLE BY TRANSFER	0 REGD. 0
ELEVATED PLAY ACTIVITIES ACCESSIBLE BY RAMP	2 REGD. 1
GROUND LEVEL ACTIVITY QUANTITY	5 REGD. 3
GROUND LEVEL ACTIVITY TYPE	
NOTES	
1. TRANSFER STEPS TO BE STORIED PER IB-10041	
2. USE ZONES FINISH SURFACE OF PLAYGROUND COMPLES WITH ASTM F1292-99	
3. GROUND SURFACING COMPLES WITH ASTM F195-99	
4. PLAYGROUND EQUIPMENT SHALL COMPLY WITH ASTM F1967-98	
5. THIS PLAY AREA MEETS CBC SECTION IB-1008	

PLAY AREA - AGE APPROPRIATE 2-5 YEARS	CAPACITY 10-15 CHILDREN
ELEVATED PLAY ACTIVITIES (TOTAL)	7 REGD. 3
ELEVATED PLAY ACTIVITIES ACCESSIBLE BY TRANSFER	0 REGD. 0
ELEVATED PLAY ACTIVITIES ACCESSIBLE BY RAMP	4 REGD. 2
GROUND LEVEL ACTIVITY QUANTITY	3 REGD. 2
GROUND LEVEL ACTIVITY TYPE	
NOTES	
1. TRANSFER STEPS TO BE STORIED PER IB-10041	
2. USE ZONES FINISH SURFACE OF PLAYGROUND COMPLES WITH ASTM F1292-99	
3. GROUND SURFACING COMPLES WITH ASTM F195-99	
4. PLAYGROUND EQUIPMENT SHALL COMPLY WITH ASTM F1967-98	
5. THIS PLAY AREA MEETS CBC SECTION IB-1008	



ALL DRAWINGS ARE SUBJECT TO CHANGE AND SHOULD BE REVIEWED BEFORE FINAL SALE. ALL SITE DIMENSIONS WILL NEED TO BE VERIFIED PRIOR TO SALE AND INSTALLATION.

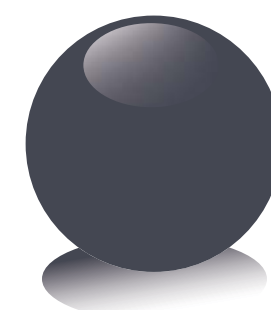
LINEAR FEET:	LF
CRITICAL FALL HEIGHT:	8'
15_0051_chichibu_003	
SITE AREA:	8980 SF
SCALE:	1/16"=1'-0"
DRAWN BY:	DT
DATE:	10-16-18

Chichibu Park  
Antioch, CA.

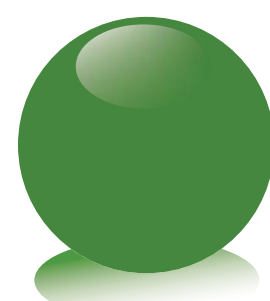




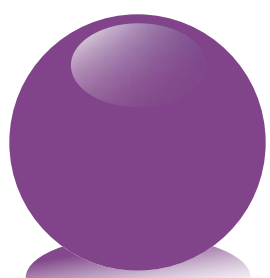
Colors Used In Rendering



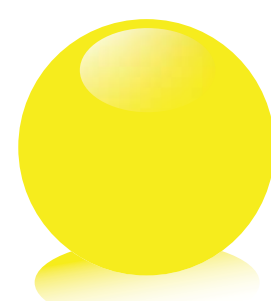
Grey



Green



Plum



Yellow

# ChichiBu Park

Antioch, CA.

10/16/18

15\_0051\_ChichiBu\_003



CREATING FUN  
PLAY ENVIRONMENTS  
TO ENRICH COMMUNITIES





## ChichiBu Park

Antioch, CA.

10/16/18

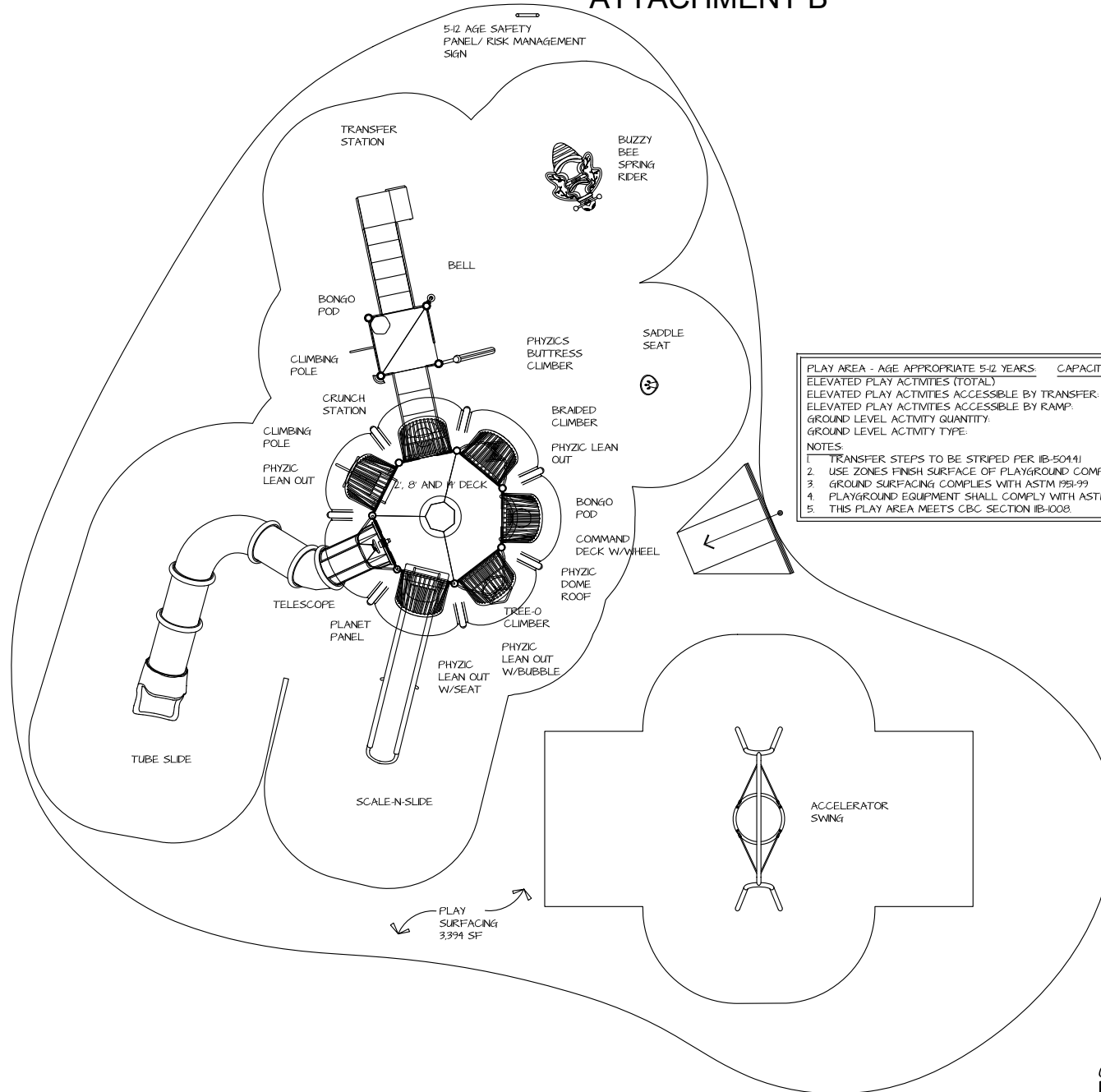
15\_0051\_ChichiBu\_003



CREATING FUN  
PLAY ENVIRONMENTS  
TO ENRICH COMMUNITIES



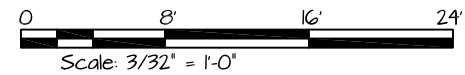
# ATTACHMENT B



PLAY AREA - AGE APPROPRIATE 5-12 YEARS		CAPACITY: 120-125 CHILDREN	
ELEVATED PLAY ACTIVITIES (TOTAL)	14		
ELEVATED PLAY ACTIVITIES ACCESSIBLE BY TRANSFER	7	REQD.	7
ELEVATED PLAY ACTIVITIES ACCESSIBLE BY RAMP	0	REQD.	0
GROUND LEVEL ACTIVITY QUANTITY	6	REQD.	5
GROUND LEVEL ACTIVITY TYPE	5	REQD.	3

NOTES:

1. TRANSFER STEPS TO BE STRIPED PER IB-5041.
2. USE ZONES FINISH SURFACE OF PLAYGROUND COMPLIES WITH ASTM F1292-99.
3. GROUND SURFACING COMPLIES WITH ASTM F951-99.
4. PLAYGROUND EQUIPMENT SHALL COMPLY WITH ASTM F1487-98.
5. THIS PLAY AREA MEETS CBC SECTION 1B-1008.



ALL DRAWINGS ARE SUBJECT TO CHANGE AND SHOULD BE REVIEWED BEFORE FINAL SALE. ALL SITE DIMENSIONS WILL NEED TO BE VERIFIED PRIOR TO SALE AND INSTALLATION.

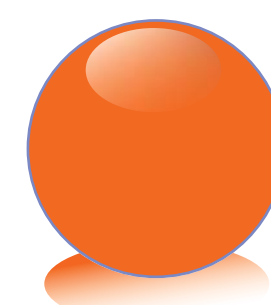
LINEAR FEET:	LF	SITE AREA:	3,394 SF
CRITICAL FALL HEIGHT:	8'	SCALE:	3/32"=1'-0"
18_1369_Jacobson_001		DRAWN BY:	DT
		DATE:	10-16-18

Jacobson Park  
Antioch, CA.

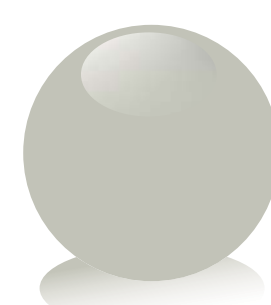




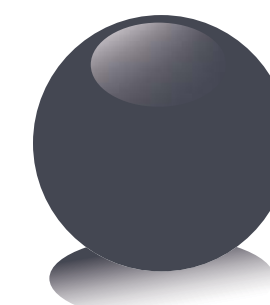
Colors Used In Rendering



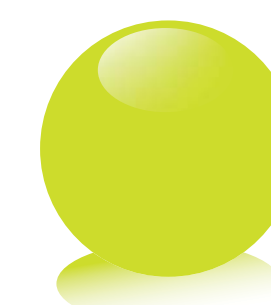
Orange



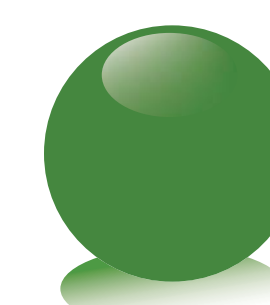
Light Grey



Grey



Chartreuse



Green

Jacobson Park

Antioch, CA.

12/11/18

18\_1369\_Jacobson\_001



CREATING FUN  
PLAY ENVIRONMENTS  
TO ENRICH COMMUNITIES





## Jacobson Park

Antioch, CA.

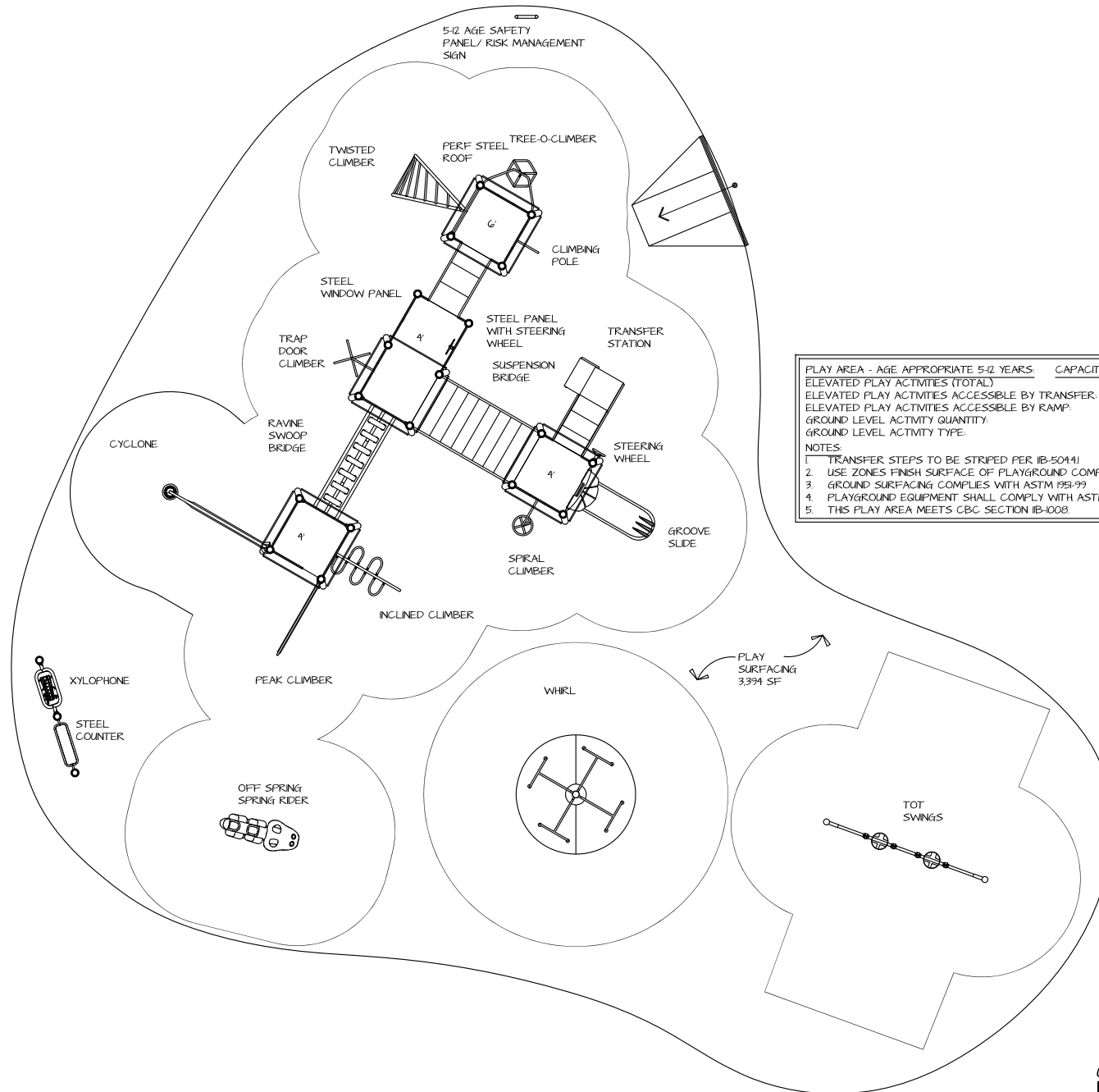
12/11/18

18\_1369\_Jacobson\_001

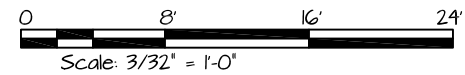


CREATING FUN  
PLAY ENVIRONMENTS  
TO ENRICH COMMUNITIES





PLAY AREA - AGE APPROPRIATE 5-1/2 YEARS		CAPACITY: 95-100 CHILDREN	
ELEVATED PLAY ACTIVITIES (TOTAL)	10	REQD.	5
ELEVATED PLAY ACTIVITIES ACCESSIBLE BY TRANSFER:	0	REQD.	0
ELEVATED PLAY ACTIVITIES ACCESSIBLE BY RAMP:	7	REQD.	3
GROUND LEVEL ACTIVITY QUANTITY:	6	REQD.	3
GROUND LEVEL ACTIVITY TYPE:			
NOTES:			
1. TRANSFER STEPS TO BE STRIPED PER IB-5041.			
2. USE ZONES FINISH SURFACE OF PLAYGROUND COMPLIES WITH ASTM F1292-99.			
3. GROUND SURFACING COMPLIES WITH ASTM F951-99.			
4. PLAYGROUND EQUIPMENT SHALL COMPLY WITH ASTM F1487-98.			
5. THIS PLAY AREA MEETS CBC SECTION IB-1008.			



ALL DRAWINGS ARE SUBJECT TO CHANGE AND SHOULD BE REVIEWED BEFORE FINAL SALE. ALL SITE DIMENSIONS WILL NEED TO BE VERIFIED PRIOR TO SALE AND INSTALLATION.

LINEAR FEET:	LF
CRITICAL FALL HEIGHT:	8'
18-1369-Jacobson-002	

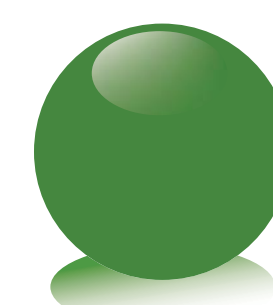
SITE AREA:	3,394 SF
SCALE:	3/32"=1'-0"
DRAWN BY:	DT
DATE:	10-16-18

Jacobson Park  
Antioch, CA.

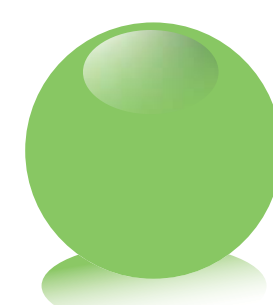




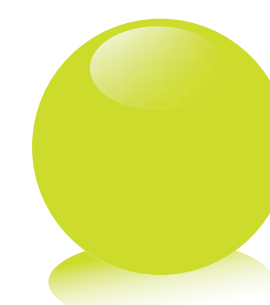
Colors Used In Rendering



Green



Lime



Chartreuse

## Jacobson Park

Antioch, CA.

12/11/18

18\_1369\_Jacobson\_002



CREATING FUN  
PLAY ENVIRONMENTS  
TO ENRICH COMMUNITIES





# Jacobson Park

Antioch, CA.

12/11/18

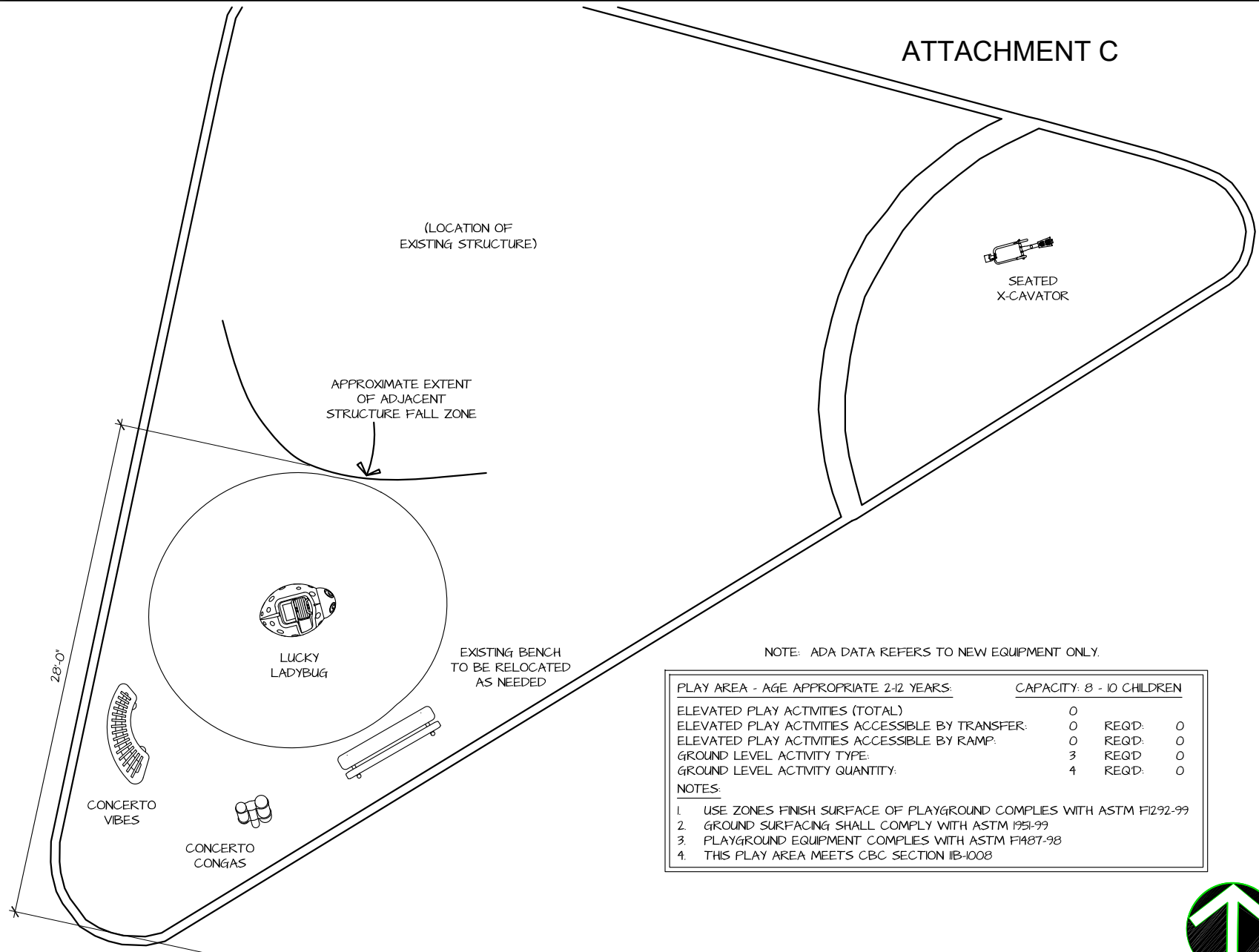
18\_1369\_Jacobson\_002



CREATING FUN  
PLAY ENVIRONMENTS  
TO ENRICH COMMUNITIES



# ATTACHMENT C

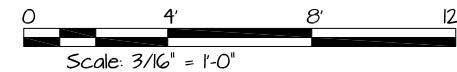


NOTE: ADA DATA REFERS TO NEW EQUIPMENT ONLY.

PLAY AREA - AGE APPROPRIATE 2-12 YEARS:		CAPACITY: 8 - 10 CHILDREN	
ELEVATED PLAY ACTIVITIES (TOTAL)	0	REQD:	0
ELEVATED PLAY ACTIVITIES ACCESSIBLE BY TRANSFER:	0	REQD:	0
ELEVATED PLAY ACTIVITIES ACCESSIBLE BY RAMP:	0	REQD:	0
GROUND LEVEL ACTIVITY TYPE:	3	REQD:	0
GROUND LEVEL ACTIVITY QUANTITY:	4	REQD:	0

## NOTES:

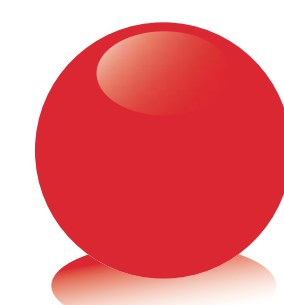
1. USE ZONES FINISH SURFACE OF PLAYGROUND COMPLIES WITH ASTM F1292-99
2. GROUND SURFACING SHALL COMPLY WITH ASTM 1951-99
3. PLAYGROUND EQUIPMENT COMPLIES WITH ASTM F1487-98
4. THIS PLAY AREA MEETS CBC SECTION 11B-1008



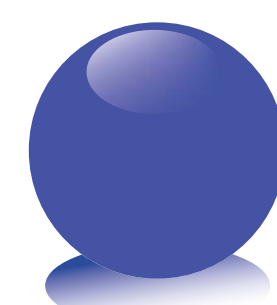




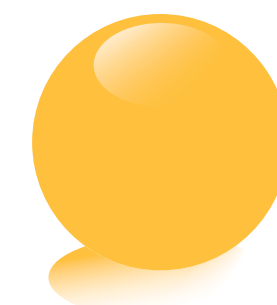
Colors Used In Rendering:



Red



Blue



Tropical Yellow

## Marchetti Park Playground Additions

Antioch, CA.

12-11-2018

18\_1370\_Marchetti\_001



CREATING FUN  
PLAY ENVIRONMENTS  
TO ENRICH COMMUNITIES



# ATTACHMENT D

## ChichiBu, Jacobson, & Marchetti Parks: Antioch-Estimated Cost Summary

1/23/2019



Description	Cost	Estimated Tax	Estimated Freight	Subtotal
<b>15_0051_ChiChiBu Park 003</b>				
<b>Equipment per plan 003</b>	\$99,710	\$8,725	\$8,974	\$117,409
Demo and removal of existing equipment	\$4,800			\$4,800
Installation of new play equipment per plan 003 to factory spec*	\$38,887	\$0	\$0	\$38,887
Offload of equipment by installer	\$850		\$0	\$850
Construction fencing for duration of project	\$3,600	\$315	\$0	\$3,915
Loading, removal and haul off of existing sand to city supplied site in contractor's truck. Estimated to be 18" deep at 668 yards***	\$16,800			\$16,800
<b>Equipment/Install Totals:</b>				<b>\$182,660</b>
<b>Optional Pour in place rubber surfacing throughout play area</b>				
Base rock subbase at approx. 18" at 8980 sf	\$31,200	\$2,730		\$33,930
Hauling of Base rock to site	\$4,800			\$4,800
Compaction of base rock to accommodate rubber surfacing	\$12,000			\$12,000
Rubber surfacing material ONLY (quoted as 50/50 mix of black with standard color: Blue, green, Terra Cotta, Tan) with aromatic binder at 8' CFH	\$74,085	\$6,482		\$80,567
Rubber surfacing installation LABOR ONLY (quoted as 50/50 mix of black with standard color: Blue, green, Terra Cotta, Tan) with aromatic binder at 8' CFH	\$74,085			\$74,085
<b>Pour in Place Access Total:</b>				<b>\$188,582</b>
<b>Grand Total (Inclusive of Site Prep, Equipment, Installation, and Pour-n-Place Surfacing)</b>				<b>\$371,243</b>
Description	Cost	Estimated Tax	Estimated Freight	Subtotal
<b>18_1369_Jacobson Park 001</b>				
<b>Equipment per plan 001</b>	\$99,847	\$8,737	\$8,986	\$117,570
Demo and removal of existing equipment	\$3,900			\$3,900
Installation of new play equipment per plan 001 to factory spec*	\$38,940	\$0	\$0	\$38,940
Offload of equipment by installer	\$850		\$0	\$850
Construction fencing for duration of project	\$2,250	\$197	\$0	\$2,447
Loading, removal and haul off of existing sand to city supplied site in contractor's truck. Estimated to be 18" deep at 250 yards***	\$10,400			\$10,400
Saw cut seat wall to allow opening in playbox	\$2,700			\$2,700
<b>Equipment/Install Totals:</b>				<b>\$176,807</b>
<b>Optional Pour in place rubber surfacing throughout play area</b>				
Base rock subbase at approx. 18" at 3394 sf	\$11,700	\$1,024		\$12,724
Hauling of Base rock to site	\$2,400			\$2,400
Compaction of base rock to accommodate rubber surfacing	\$6,000			\$6,000
Rubber surfacing material ONLY (quoted as 50/50 mix of black with standard color: Blue, green, Terra Cotta, Tan) with aromatic binder at 8' CFH	\$28,001	\$2,450		\$30,451
Rubber surfacing installation LABOR ONLY (quoted as 50/50 mix of black with standard color: Blue, green, Terra Cotta, Tan) with aromatic binder at 8' CFH	\$28,001			\$28,001
<b>Pour in Place Access Total:</b>				<b>\$79,575</b>



<b>Grand Total: (Inclusive of Site Prep, Equipment, Installation, and Pour-n-Place Surfacing)</b>				<b>\$256,382</b>
<b>Description</b>	<b>Cost</b>	<b>Estimated Tax</b>	<b>Estimated Freight</b>	<b>Subtotal</b>
<b>18_1370_Marchetti Park 001</b>				
<b>Equipment per plan 001</b>	\$8,323	\$728	\$749	\$9,800
Installation of new play equipment per plan 001 to factory spec*, to include spring rider, X-Cavator, and Musical Components. Pricing inclusive of rubber patch work under new play components; excluding sand play area	\$5,493	\$0	\$0	\$5,493
<b>Grand Total: (Equipment/Install)</b>				<b>\$15,294</b>

**Notes:**

For Budgetary puposes only-Not for ordering or construction

CMAS pricing applied

Lead time on Equipment estimated at 8 weeks

Sales tax based on 8.75%

\*Prevailing wages applied to installation services

\*\*\*If sand is deeper, quote to be revised. City can also mitigate cost by removing and disposal by city. Sand to be disposed of at City approved site.

Permits,\*\* bonding, and engineered drawings, and structural calculations not included in scope

ADA accessibility to box not in scope of work

Spoils and excavated material to be disposed of at city location.

Pricing Valid until 3/30/19

For Marchetti Installation cost to include patching of pour in place at spring rider.

Not to exceed 25 SF. Should bench need to be relocated, additonal cost for PIP

patching and re-installation will be quoted at that time.



## **STAFF REPORT TO THE PARKS AND RECREATION COMMISSION**

**DATE:** Regular Meeting of February 21, 2019

**TO:** Parks and Recreation Commission

**SUBMITTED BY:** Tracy Tope, Assistant Engineer

**REVIEWED BY:** Scott Buening, Project Manager

**APPROVED BY:** Jon Blank, Public Works Director/City Engineer

**SUBJECT:** Resolution of Support for a Transportation Development Act Grant for the Mokelumne Trail Bicycle Path Improvements (P.W. 404-11)

---

### **RECOMMENDED ACTION**

It is recommended that the Parks and Recreation Commission, acting as the Pedestrian and Bicycle Advisory Committee (PBAC) for the City of Antioch, adopt the attached Resolution of Support for Mokelumne Trail Bicycle Path Improvements Project Transportation Development Act Article 3 grant application for the widening of the sidewalk on the eastern side of Hillcrest Avenue between the East Bay Municipal Utility District right of way and Lone Tree Way.

### **DISCUSSION**

Members of the Countywide Bicycle Advisory Committee (CBAC) recommended improvements to the Metropolitan Transportation Commission that would improve access along the Mokelumne Aqueduct Trail. City staff met with a representative of the CBAC to discuss the project definition and grant application and agreed to prepare and submit an application to request grant funding prior to the grant deadline of January 31, 2019.

On February 5, 2019, the City Council approved a resolution authorizing the submission of an application requesting an allocation of Transportation Development Act Article 3 Pedestrian/Bicycle Project Funds to widen the sidewalk on the eastern side of Hillcrest Avenue between East Bay Municipal Utility District right of way and Lone Tree Way. This portion of the Mokelumne Aqueduct Trail currently consists of a five-foot-wide meandering sidewalk. This pathway is sufficient for a quiet residential street but is inadequate to handle the expected increase in bicycle and pedestrian traffic that will be generated along the Mokelumne Aqueduct Trail once the bridge across Highway 4 opens.

### **ATTACHMENTS**

- A: Resolution
- B: Exhibit A

**ATTACHMENT "A"**

**RESOLUTION NO. 2019/\*\*  
RESOLUTION OF THE CITY PARKS AND RECREATION COMMISSION  
OF THE CITY OF ANTIOCH, ACTING AS THE CITY OF ANTIOCH PEDESTRIAN  
AND BICYCLE ADVISORY COMMITTEE, RESOLUTION OF SUPPORT FOR THE  
MOKELUMNE TRAIL BICYCLE PATH IMPROVEMENTS PROJECT TDA ARTICLE 3  
GRANT APPLICATION  
P.W. 404-11**

**WHEREAS**, on August 11, 2015, the Antioch City Council appointed the Parks and Recreation Commission as the Pedestrian and Bicycle Advisory Committee (PBAC) for the City of Antioch; and

**WHEREAS**, on May 19, 2016, the Parks and Recreation Commission acting as the Pedestrian and Bicycle Advisory Committee (PBAC) for the City of Antioch recommended safety projects as one of the priorities for bicycle and pedestrian improvements in the City; and

**WHEREAS**, the City of Antioch desires to submit a request to MTC for the allocation of TDA Article 3 funds to support the projects described in Exhibit A to this resolution, which are for the exclusive benefit and/or use of pedestrians and/or bicyclists;

**NOW, THEREFORE, BE IT RESOLVED**, that the project was reviewed on February 21, 2019 by the Parks and Recreation Commission, the designated PBAC for the City of Antioch and the designated representative; and furthermore, be it

**RESOLVED**, that the Mokelumne Trail Bicycle Path Improvements Project will provide improved safety for bicyclists and pedestrians; and furthermore, be it

**RESOLVED**, that a certified copy of this resolution and its attachments, and any accompanying supporting materials shall be forwarded to the congestion management agency, countywide transportation planning agency, or county association of governments, as the case may be, of Contra Costa County for submission to MTC as part of the countywide coordinated TDA Article 3 claim.

\* \* \* \* \*

**I HEREBY CERTIFY** that the foregoing resolution was passed and adopted by the Parks and Recreation Commission of the City of Antioch, acting as the City's PBAC, at a regular meeting thereof held on the 21<sup>st</sup> day of February, 2019 by the following vote:

**AYES:**

**NOES:**

**ABSENT:**

---

**NANCY KAISER  
CLERK TO THE PARKS AND  
RECREATION COMMISSION**

## EXHIBIT "A"

Re: Request to the Metropolitan Transportation Commission for the Allocation of Fiscal Year 2019 Transportation Development Act Article 3 Pedestrian/Bicycle Project Funding

### Findings

1. That the City of Antioch is not legally impeded from submitting a request to the Metropolitan Transportation Commission for the allocation of Transportation Development Act (TDA) Article 3 funds, nor is the City of Antioch legally impeded from undertaking the project(s) described in Exhibit A of this resolution.
2. That the City of Antioch has committed adequate staffing resources to complete the project(s) described in Exhibit A.
3. A review of the project(s) described in Exhibit A has resulted in the consideration of all pertinent matters, including those related to environmental and right-of-way permits and clearances, attendant to the successful completion of the project(s).
4. Issues attendant to securing environmental and right-of-way permits and clearances for the projects described in Exhibit A have been reviewed and will be concluded in a manner and on a schedule that will not jeopardize the deadline for the use of the TDA funds being requested.
5. That the project(s) described in Exhibit A comply with the requirements of the California Environmental Quality Act (CEQA, Public Resources Code Sections 21000 et seq.).
6. That as portrayed in the budgetary description(s) of the project(s) in Exhibit A, the sources of funding other than TDA are assured and adequate for completion of the project(s).
7. That the project(s) described in Exhibit A are for capital construction and/or design engineering; and/or for the maintenance of a Class I bikeway which is closed to motorized traffic; and/or for the purposes of restriping Class II bicycle lanes; and/or for the development or support of a bicycle safety education program; and/or for the development of a comprehensive bicycle and/or pedestrian facilities plan, and an allocation of TDA Article 3 funding for such a plan has not been received by the City of Antioch within the prior five fiscal years.
8. That the project(s) described in Exhibit A is included in a locally approved bicycle, pedestrian, transit, multimodal, complete streets, or other relevant plan.
9. That any project described in Exhibit A that is a bikeway meets the mandatory minimum safety design criteria published in Chapter 1000 of the California Highway Design Manual.
10. That the project(s) described in Exhibit A will be completed before the funds expire.
11. That City of Antioch agrees to maintain, or provide for the maintenance of, the project(s) and facilities described in Exhibit A, for the benefit of and use by the public.

## TDA Article 3 Project Application Form

Fiscal Year of this Claim: 2019-2020

Applicant: City of Antioch

Contact person: Tracy Tope

Mailing Address: P.O. Box 5007, Antioch, CA 94531-5007

E-Mail Address: [ttope@ci.antioch.ca.us](mailto:ttope@ci.antioch.ca.us)

Telephone: 925-779-6130

Secondary Contact (in event primary not available): Scott Buenting

E-Mail Address: [sbuenting@ci.antioch.ca.us](mailto:sbuenting@ci.antioch.ca.us)

Telephone: 925-779-6129

**Short Title Description of Project: Mokelumne Aqueduct Trail Improvements**

Amount of claim: \$ 120,000

**Functional Description of Project:**

This project would widen the sidewalk on the eastern side of Hilcrest Avenue between Mokelumne Aqueduct Trail and Lone Tree Way to a width of ten feet provided that fencing within EBMUD right of way can be relocated. This work would be built in anticipation of the increased traffic due to the future bridge that will cross Highway 4 connecting the trail to the planned e-BART expansion in Brentwood. This project will also smooth the transition from trail to sidewalk, creating a more comfortable ride and increasing usability for riders of all skill level.

**Financial Plan:**

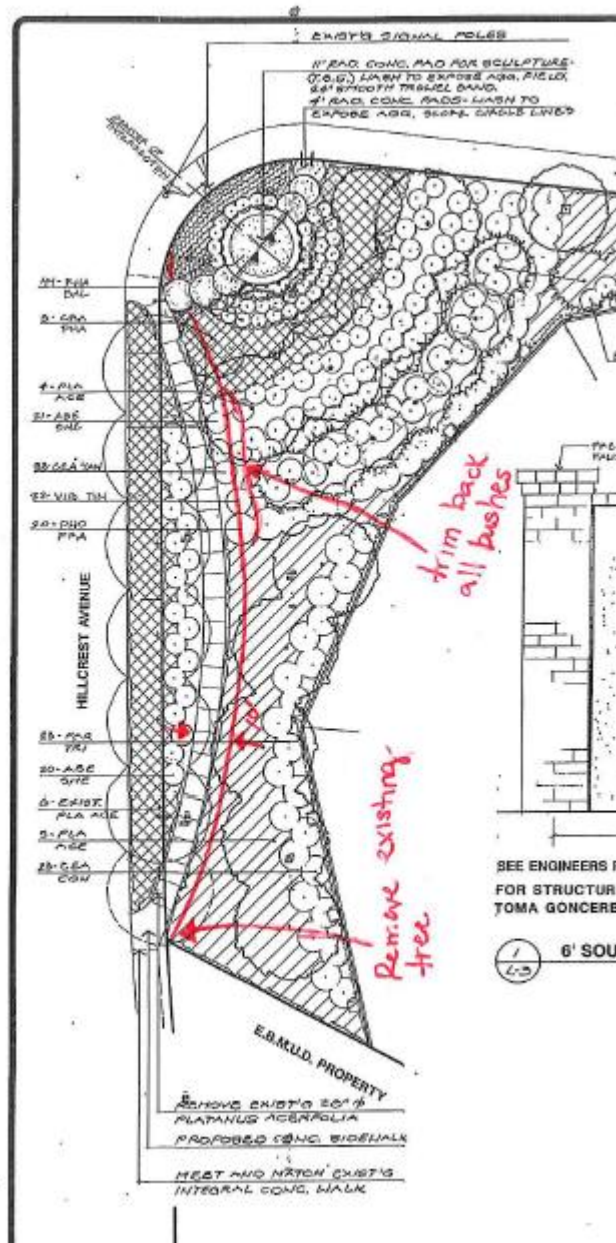
List the project elements for which TDA funding is being requested (e.g., planning, engineering, construction, contingency). Use the table below to show the project budget for the phase being funded or total project. Include prior and proposed future funding of the project. Planning funds may only be used for comprehensive bicycle and pedestrian plans. Project level planning is not an eligible use of TDA Article 3.

**Project Elements:** This project includes excavation, removing and replacing existing sidewalk, removal of trees and shrubbery and relocation of existing irrigation system and East Bay Regional Park fence (upon approval).

Funding Source	All Prior FYs	Application FY	Next FY	Following FYs	Totals
TDA Article 3					
list all other sources: Local match: \$30,000					
1. ROW, Mobilization, Traffic Control		\$25,000			\$25,000
2. Clear and Grub		\$10,000			\$10,000
3. Irrigation Relocation		\$25,000			\$25,000
4. Sidewalk Construction		\$90,000			\$90,000
<b>Totals</b>		\$150,000			\$150,000

Project Eligibility:	YES?/NO?
<b>A.</b> Has the project been approved by the claimant's governing body? (If "NO," provide the approximate date approval is anticipated). February 5, 2019	No
<b>B.</b> Has this project previously received TDA Article 3 funding? If "YES," provide an explanation on a separate page.	No
<b>C.</b> For "bikeways," does the project meet Caltrans minimum safety design criteria pursuant to Chapter 1000 of the California Highway Design Manual? (Available on the internet via: <a href="http://www.dot.ca.gov">http://www.dot.ca.gov</a> ).	Yes
<b>D.</b> Has the project been reviewed by a Bicycle Advisory Committee (BAC)? (If "NO," provide an explanation). Enter date the project was reviewed by the BAC: 12/10/2018	Yes
<b>E.</b> Has the public availability of the environmental compliance documentation for the project (pursuant to CEQA) been evidenced by the dated stamping of the document by the county clerk or county recorder? (required only for projects that include construction).	No
<b>F.</b> Will the project be completed before the allocation expires? Enter the anticipated completion date of project (month and year) May 2020	Yes
<b>G.</b> Have provisions been made by the claimant to maintain the project or facility, or has the claimant arranged for such maintenance by another agency? (If an agency other than the Claimant is to maintain the facility provide its name: )	Yes

# Site Plan





## RELOCATION OF EXISTING FENCE



**Fence Location**

