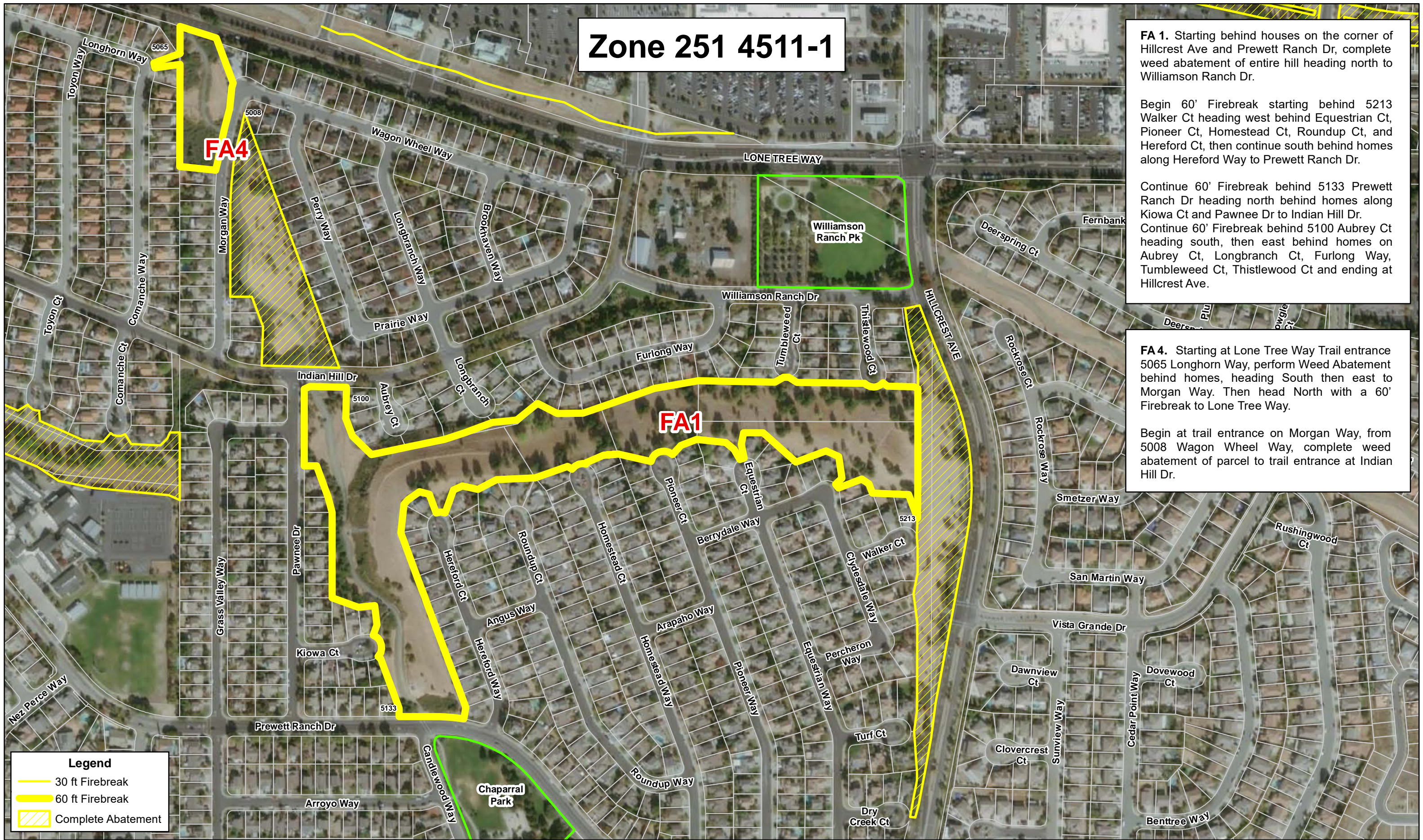


# Zone 251 4511-1



**FA 1.** Starting behind houses on the corner of Hillcrest Ave and Prewett Ranch Dr, complete weed abatement of entire hill heading north to Williamson Ranch Dr.

Begin 60' Firebreak starting behind 5213 Walker Ct heading west behind Equestrian Ct, Pioneer Ct, Homestead Ct, Roundup Ct, and Hereford Ct, then continue south behind homes along Hereford Way to Prewett Ranch Dr.

Continue 60' Firebreak behind 5133 Prewett Ranch Dr heading north behind homes along Kiowa Ct and Pawnee Dr to Indian Hill Dr. Continue 60' Firebreak behind 5100 Aubrey Ct heading south, then east behind homes on Aubrey Ct, Longbranch Ct, Furlong Way, Tumbleweed Ct, Thistlewood Ct and ending at Hillcrest Ave.

**FA 4.** Starting at Lone Tree Way Trail entrance 5065 Longhorn Way, perform Weed Abatement behind homes, heading South then east to Morgan Way. Then head North with a 60' Firebreak to Lone Tree Way.

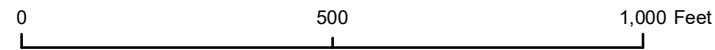
Begin at trail entrance on Morgan Way, from 5008 Wagon Wheel Way, complete weed abatement of parcel to trail entrance at Indian Hill Dr.

**Legend**

30 ft Firebreak

60 ft Firebreak

Complete Abatement





# Zone 251 4511-2

**FA 2.** Complete weed abatement starting behind 5124 Grass Valley Way to 5136 Grass Valley Way.

Continuing West from 5136 Grass Valley Way to sagebrush Dr.

Continue weed abatement North to Indian Hills Dr

From Indian Hills Dr head East to 5124 Sundance Ct, continuing east behind Sundance Ct, Toyon Ct, Comanche Ct and to the end of the property line at 5125 Comanche Ct.

**FA 3.** Perform 30 ft. firebreak along Deer Valley High School Pathway East to Sagebrush Drive

Head South along Sagebrush Dr to Prewett Ranch Dr complete Weed Abatement.

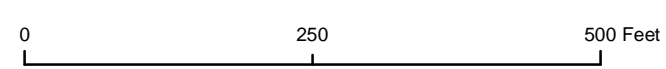
**FA3**

**FA3**

**FA2**

**Legend**

- 30 ft Firebreak
- 60 ft Firebreak
- Complete Abatement





# Zone 251 4512-1

**FB 1.** Start behind 2632 Strawberry Ct and end behind 2408 Mark Twain Dr

Continue Abatement of Slope heading Northwest behind 2342 Mark Twain Dr.

Head West behind homes with a 60' Firebreak to Mokelumne Drive

**FB 2.** Starting behind 2355 Croker Ct create 60' Firebreak to V Ditch and 2349 Forty Niner Ct

Continue with a 30' Firebreak behind homes on Forty Niner Way, Anita Ct, Elena Ct and Squaw Ct, Ending at Deer Valley Rd.

**FB1**

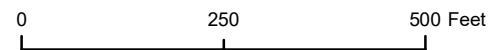
**FB2**

**FA3**



**Legend**

- 30 ft Firebreak
- 60 ft Firebreak
- Complete Abatement





# Zone 251 4512-2

**FB 3.** Start Behind 1948 Kern Mountain Way, perform 30' Firebreak to 1863 Mt. Conness Ct, continuing West to Dallas Ranch Rd.

**FB 4.** Start behind 5106 Sims Mountain Ct, perform 30' Firebreak behind houses heading East to Mokelumne Dr



0 250 500 Feet





# Zone 251 4512-3

**FB 5.** Start East of Dallas Ranch Rd, Starting at 1807 Tioga Pass Ct, Complete Abatement of Parcel heading east to 2035 Mokelumne Dr.

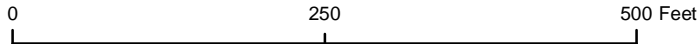
1807

**FB5**

2035

**Legend**

- 30 ft Firebreak
- 60 ft Firebreak
- Complete Abatement





# Zone 251 4513-1

**FC 1.** 60 ft firebreak of Lone Tree slope between Dallas Ranch and Golf Course Roads, behind Cougar Peak Ct and Sheffels Peak Ct. Finish behind 4703 Matterhorn Court. Top of hill along homes only.

Also, complete abatement of slope behind 4655 Golf Course Rd, heading West, then North to the entrance of 4655.

**FC 2.** Abate area behind houses on Cache Peak at Golf Course Rd that continues behind Matterhorn Way and then Crestone Needle Way then around water tank to behind Bedford Peak, Snowmass Peak, Shavano Peak, and Torreys Peak Court.

Along Golf Course Rd connect 60' Fuel break from Torreys Peak Ct North to Cache Peak Dr.

**FC2**

**FC1**

**Legend**

30 ft Firebreak

60 ft Firebreak

Complete Abatement



# Zone 251 4513-2

**FC 3.** Start 30' Weed Abatement behind houses on Mesa Ridge at north side of the trail entrance, continue behind houses on Woodhaven Way and Stonecrest Dr, end behind homes on Springcrest Ct at Dallas Ranch

**FC 4.** 30' Weed Abatement start behind 5101 Trailridge Ct, head West behind home to 1317 Stony Gorge Way, then only complete abatement of parcel adjoining Dallas Ranch Park

**FC 5.** Begin 30' abatement behind homes at 1133 Prewett Ranch Dr, heading west behind homes to Mesa Ridge Dr.

**FC3**

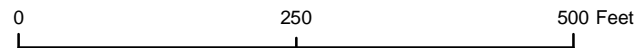
**FC4**

**FC5**

Dallas Ranch Park

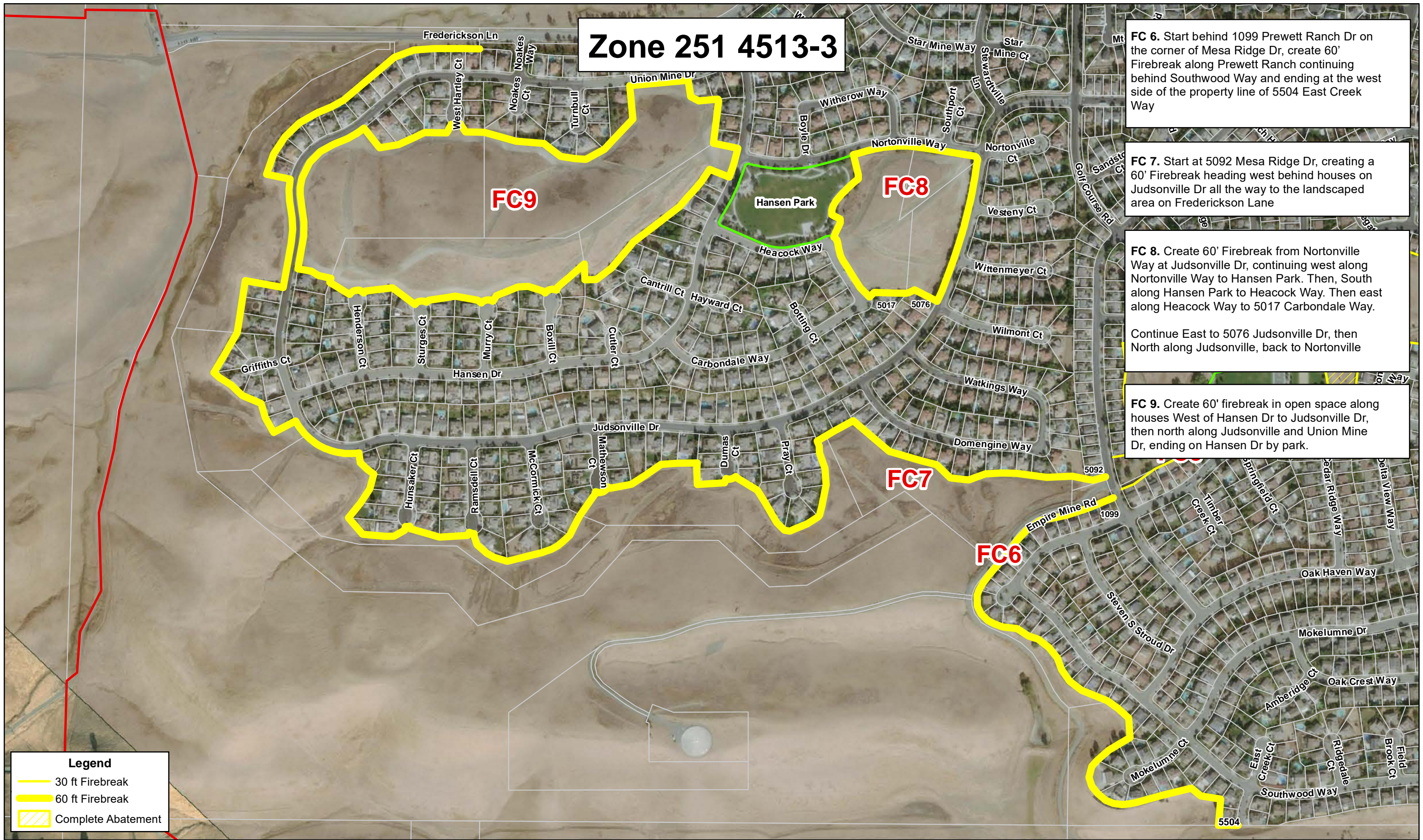
**Legend**

- 30 ft Firebreak
- 60 ft Firebreak
- Complete Abatement





# Zone 251 4513-3



**FC 6.** Start behind 1099 Prewett Ranch Dr on the corner of Mesa Ridge Dr, create 60' Firebreak along Prewett Ranch continuing behind Southwood Way and ending at the west side of the property line of 5504 East Creek Way

**FC 7.** Start at 5092 Mesa Ridge Dr, creating a 60' Firebreak heading west behind houses on Judsonville Dr all the way to the landscaped area on Frederickson Lane

**FC 8.** Create 60' Firebreak from Nortonville Way at Judsonville Dr, continuing west along Nortonville Way to Hansen Park. Then, South along Hansen Park to Heacock Way. Then east along Heacock Way to 5017 Carbondale Way.

Continue East to 5076 Judsonville Dr, then North along Judsonville, back to Nortonville

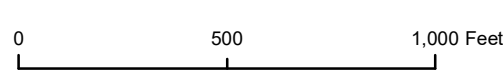
**FC 9.** Create 60' firebreak in open space along houses West of Hansen Dr to Judsonville Dr, then north along Judsonville and Union Mine Dr, ending on Hansen Dr by park.

**Legend**

30 ft Firebreak

60 ft Firebreak

Complete Abatement





# Zone 253 4531

**FD 1.** Trail beginning at Oakley Road east to Phillips Lane, both sides; complete abatement.

**FD 2.** Open lot between 3100 Filbert St and 3032 Beechnut Ct; complete abatement.

**FD 3.** Southwest parcel Wilson Street at 18th St; complete abatement

**FD3**

**FD2**

**FD1**

## Legend

- 30 ft Firebreak
- 60 ft Firebreak
- Complete Abatement

0 250 500 Feet



# Zone 254 4541-1

**FE 1.** Begin 60' firebreak at landscaped area behind 2820 Terrace View Ave continue behind homes to 3308 Terrace View Ave. Continue behind and next to the four houses on Hillcrest Avenue from 3501 to 3527

Adding 30' along westside of 3501 Hillcrest Ave, Hillcrest Ave, and along eastside 3457 Hillcrest Ave.

**FE 2.** Start 30' firebreak behind 3300 Baywood Circle, proceed north along Bellflower Dr, then west to 3112 Ferngrove Way. Continue south along fenceline behind Crestline Ct, Vista Hills Ct and Hidden Hills Ct, all the way to Terrace View Ave.

Starting again at 3300 Baywood Circle proceed south behind homes along Baywood Circle all the way back to Bellflower Dr at 3628 Baywood Circle.

Starting at 3201 Bellflower Dr, head north and then east with a 60' firebreak ending behind 3525 Leafwood Circle (APN 052-470-001).

Starting again at 3201 Bellflower Dr, 30' firebreak north to 3120 Sunflower Dr, then east behind homes to Larkspur Dr, by school entrance.

Legend

30 ft Firebreak

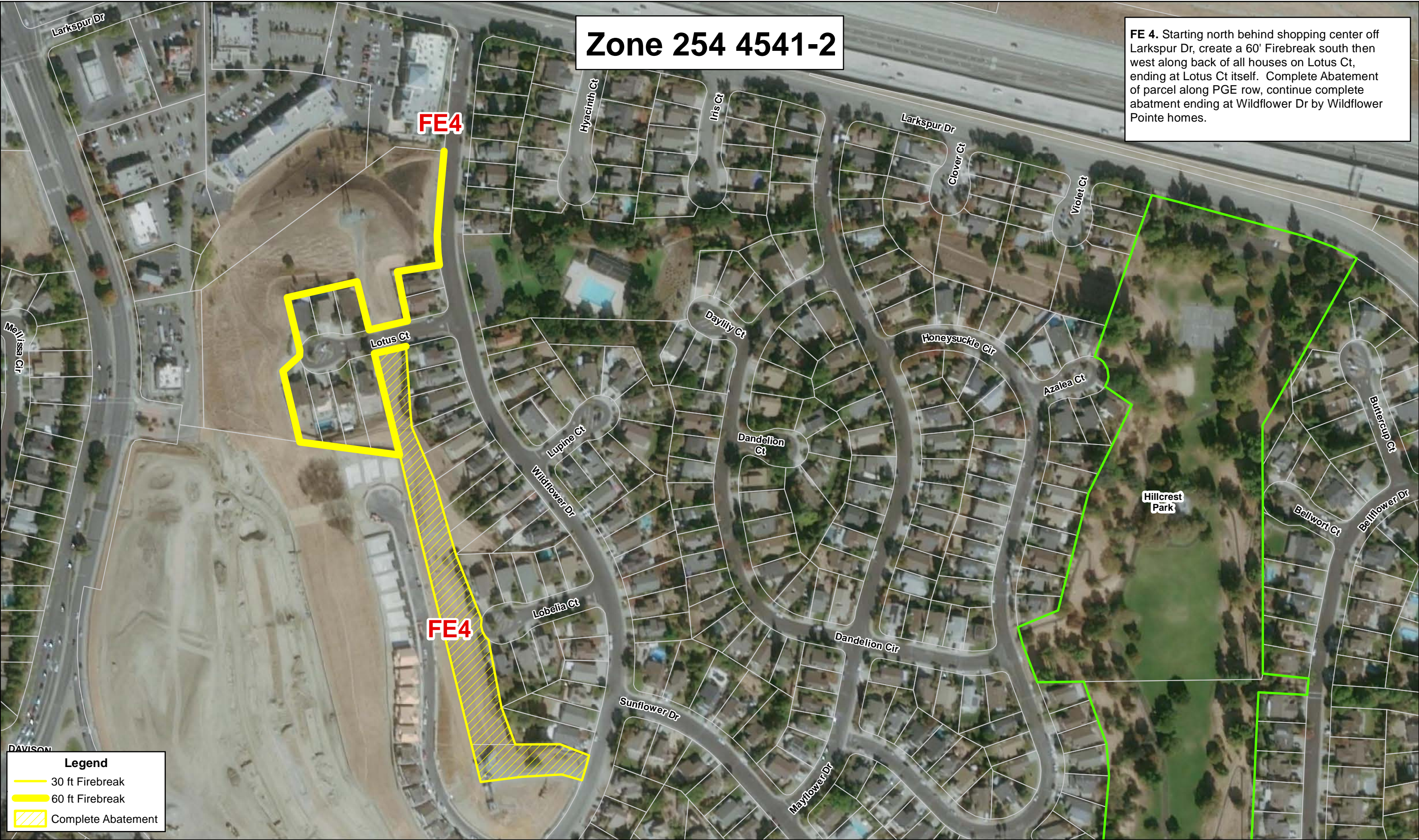
60 ft Firebreak

Complete Abatement



# Zone 254 4541-2

**FE 4.** Starting north behind shopping center off Larkspur Dr, create a 60' Firebreak south then west along back of all houses on Lotus Ct, ending at Lotus Ct itself. Complete Abatement of parcel along PGE row, continue complete abatement ending at Wildflower Dr by Wildflower Pointe homes.



**Legend**

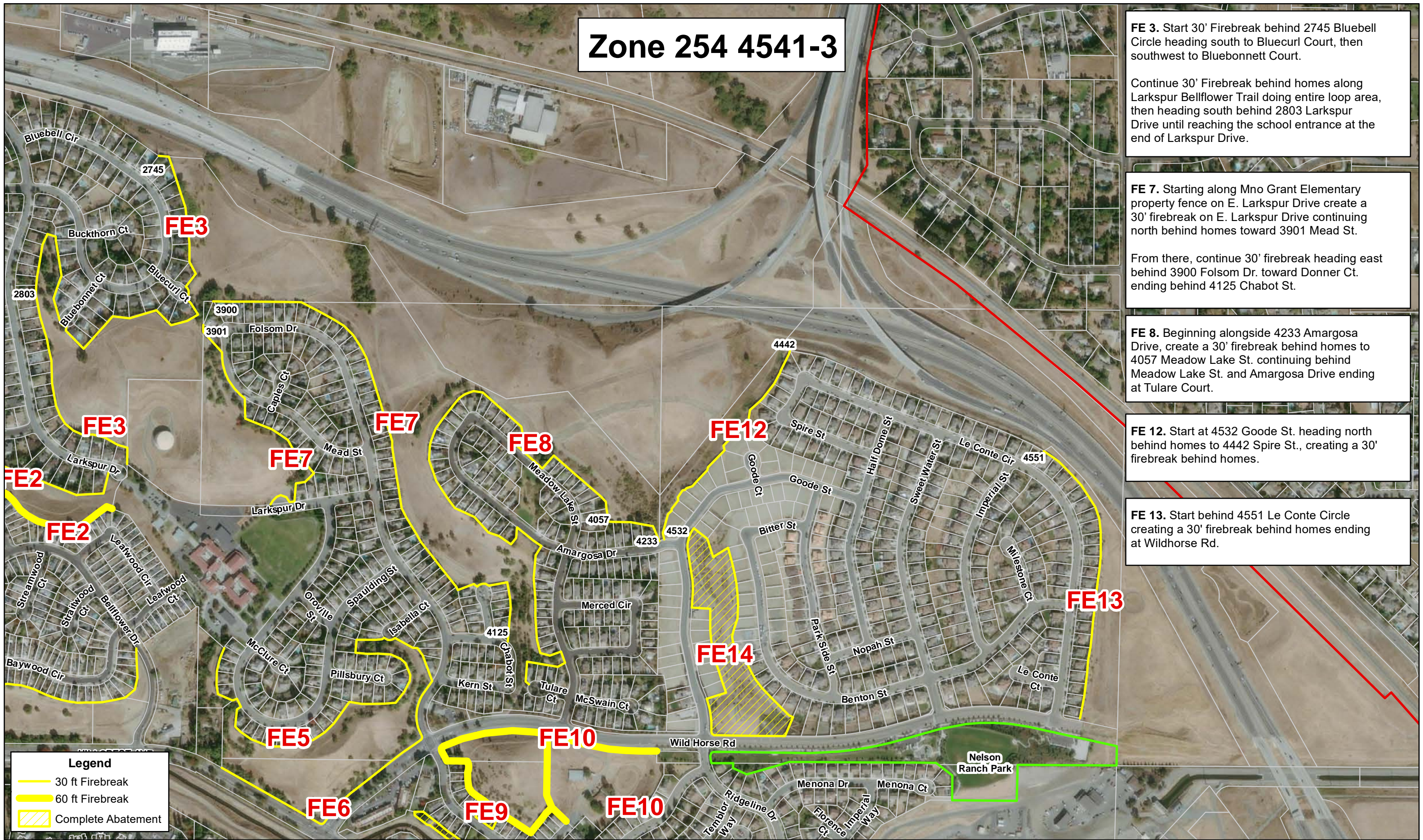
- 30 ft Firebreak
- 60 ft Firebreak
- Complete Abatement

0 250 500 Feet





# Zone 254 4541-3



**FE 3.** Start 30' Firebreak behind 2745 Bluebell Circle heading south to Bluecurl Court, then southwest to Bluebonnett Court.

Continue 30' Firebreak behind homes along Larkspur Bellflower Trail doing entire loop area, then heading south behind 2803 Larkspur Drive until reaching the school entrance at the end of Larkspur Drive.

**FE 7.** Starting along Mno Grant Elementary property fence on E. Larkspur Drive create a 30' firebreak on E. Larkspur Drive continuing north behind homes toward 3901 Mead St.

From there, continue 30' firebreak heading east behind 3900 Folsom Dr. toward Donner Ct. ending behind 4125 Chabot St.

**FE 8.** Beginning alongside 4233 Amargosa Drive, create a 30' firebreak behind homes to 4057 Meadow Lake St. continuing behind Meadow Lake St. and Amargosa Drive ending at Tulare Court.

**FE 12.** Start at 4532 Goode St. heading north behind homes to 4442 Spire St., creating a 30' firebreak behind homes.

**FE 13.** Start behind 4551 Le Conte Circle creating a 30' firebreak behind homes ending at Wildhorse Rd.

**Legend**

- 30 ft Firebreak
- 60 ft Firebreak
- Complete Abatement



# Zone 254 4541-4



**FE 5.** Begin at 4157 Folsom Dr. going behind Isabella Court and Pillsbury Court continuing behind 4233 Spaulding St. until reaching 4265 Spaulding St.

**FE 6.** Starting back at 4157 Folsom Drive creating 30' firebreak heading south toward Wildhorse Rd. continuing west behind 'Landscape' on Hillcrest Ave then finishing at the end of the property line of 4215 Hillcrest Ave.

**FE 9.** Complete abatement of open space between 4331 and 4337 Folsom Drive.

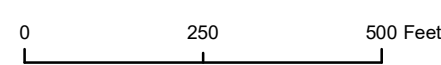
**FE 10.** Starting at the parking lot next to 4309 Folsom Drive create a 60' firebreak behind homes on Folsom Drive to 4315 Berryessa Ct. Continue north along the property line to Wildhorse Rd, then create a 60' firebreak back to the parking lot next to 4309 Folsom Dr.

**FE 11.** Complete abatement at trail entrance behind 4516 Loon Ct. to behind 4504 Temblor Way.  
Continue complete abatement of slope starting at 4500 Temblor to 4316 Folsom Dr. (CCWD Property to Ridge)

**FE 14.** Monterra Subdivision – Complete abatement from 4520 Benton St. to 4580 Benton St., then the Goode St. power tower continuing north behind homes on Goode St. to tower entrance.

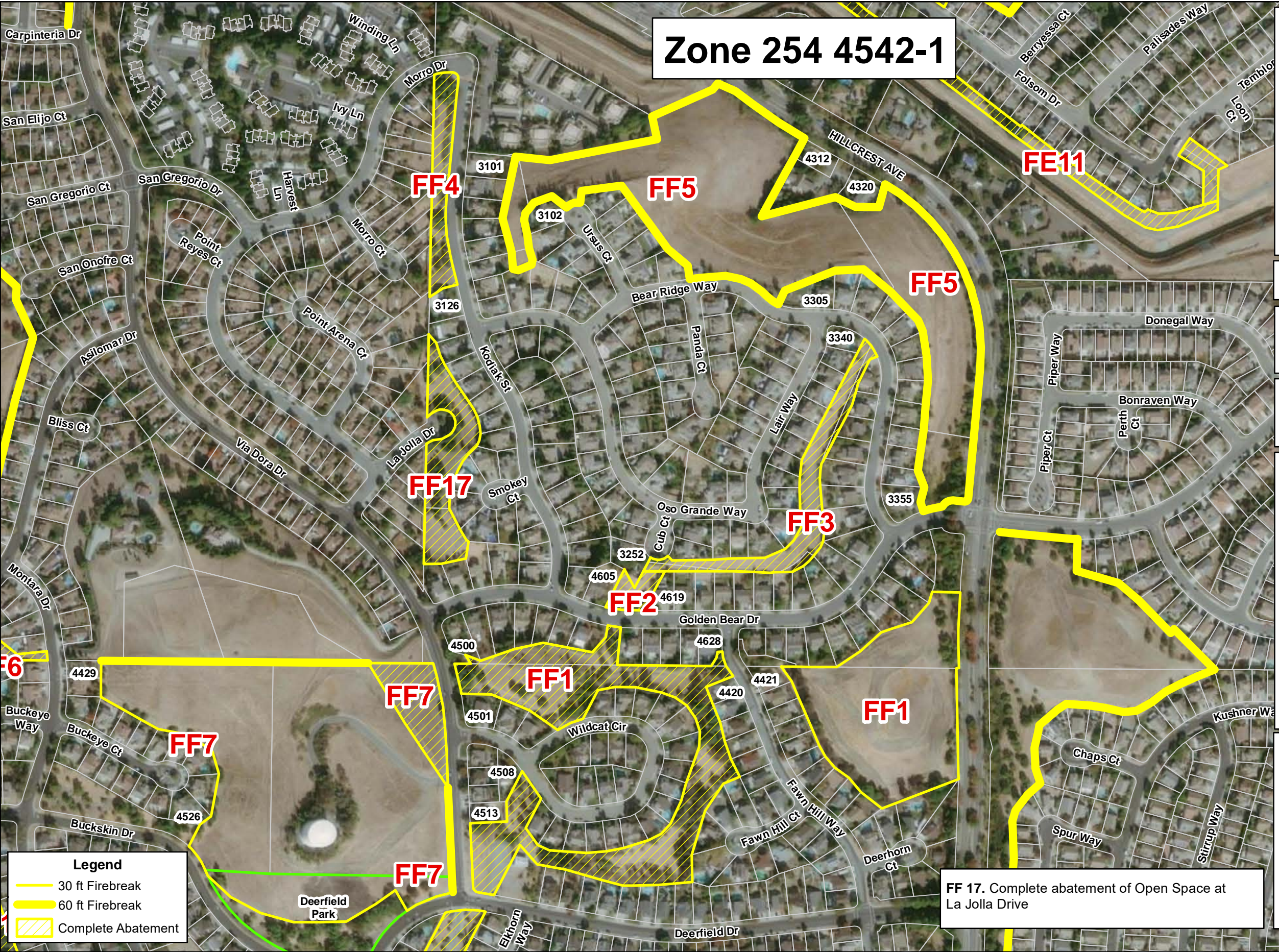
**Legend**

- 30 ft Firebreak
- 60 ft Firebreak
- Complete Abatement





# Zone 254 4542-1



**FF 1.** Complete abatement Greenbelt area behind Wildcat Circle from fire station on Deerfield Drive east to 4420 Fawn Hill Way then west to 4501 Wildcat Circle doing entire area from fence to fence including fescue and entrance areas.

From 4508 Wildcat Circle, proceed south back to fire station and west along 4531 Via Dora Dr, complete abatement.

Starting at 4421 Fawn Hill Way, go east along fencelines to Hillcrest Ave, north along Hillcrest Ave to Golden Bear houses, then west back to 4421 Fawn Hill, 30' firebreak.

**FF 2.** Weed Abate Entire lot between 4605 and 4619 Golden Bear Drive.

**FF 3.** Complete abatement at Bear Ridge Way in open space behind houses at 3340 Lair Way to 3252 Cub Court

**FF 4.** Complete abatement starting at 3126 Kodiak St heading north to the end of Morro Drive

**FF 5.** Creat 60' firebreak going behind 3355 Bear Ridge Way to 3305 Bear Ridge Way then heading west toward 3102 Ursus Court and ending behind 3101 Kodiak St.

Continue north behind 3101 Kodiak St., then east behind fence line of Hillcrest View Apts.

From there, continue along CCWD Canal fence line to Hillcrest Ave landscape, then head south along Hillcrest Ave. around homes to 4320 Hillcrest Ave.

Heading south, create 30' firebreak back to 3355 Golden Bear Dr.

**FF 7.** From 4429 Montara Drive create 30' firebreak behind houses to 4526 Buckeye Ct.

Heading east, create 30' firebreak to Via Dora Dr then heading North, create 60' firebreak along Via Dora Dr to Deerfield Tank entrance.

Complete abatement of entire lot North of the entrance to the water tank fence line. Then, create 60' firebreak along fence line to 4429 Montara Dr.

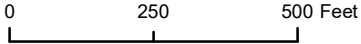
**FF 17.** Complete abatement of Open Space at La Jolla Drive

**Legend**

30 ft Firebreak

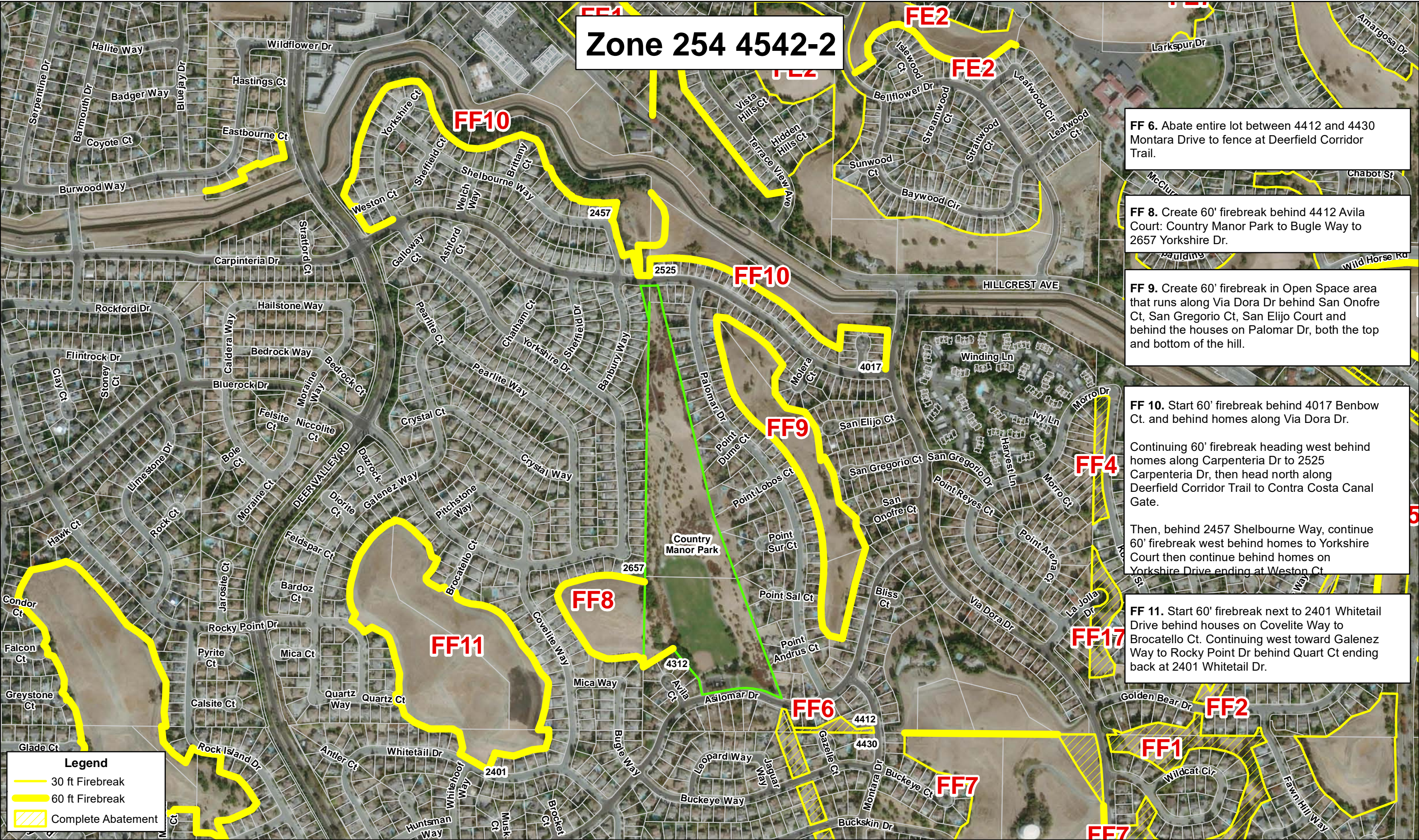
60 ft Firebreak

Complete Abatement





# Zone 254 4542-2



**FF 6.** Abate entire lot between 4412 and 4430 Montara Drive to fence at Deerfield Corridor Trail.

**FF 8.** Create 60' firebreak behind 4412 Avila Court: Country Manor Park to Bugle Way to 2657 Yorkshire Dr.

**FF 9.** Create 60' firebreak in Open Space area that runs along Via Dora Dr behind San Onofre Ct, San Gregorio Ct, San Elijo Court and behind the houses on Palomar Dr, both the top and bottom of the hill.

**FF 10.** Start 60' firebreak behind 4017 Benbow Ct. and behind homes along Via Dora Dr. Continuing 60' firebreak heading west behind homes along Carpenteria Dr to 2525 Carpenteria Dr, then head north along Deerfield Corridor Trail to Contra Costa Canal Gate. Then, behind 2457 Shelbourne Way, continue 60' firebreak west behind homes to Yorkshire Court then continue behind homes on Yorkshire Drive ending at Weston Ct.

**FF 11.** Start 60' firebreak next to 2401 Whitetail Drive behind houses on Covelite Way to Brocatello Ct. Continuing west toward Galenez Way to Rocky Point Dr behind Quart Ct ending back at 2401 Whitetail Dr.

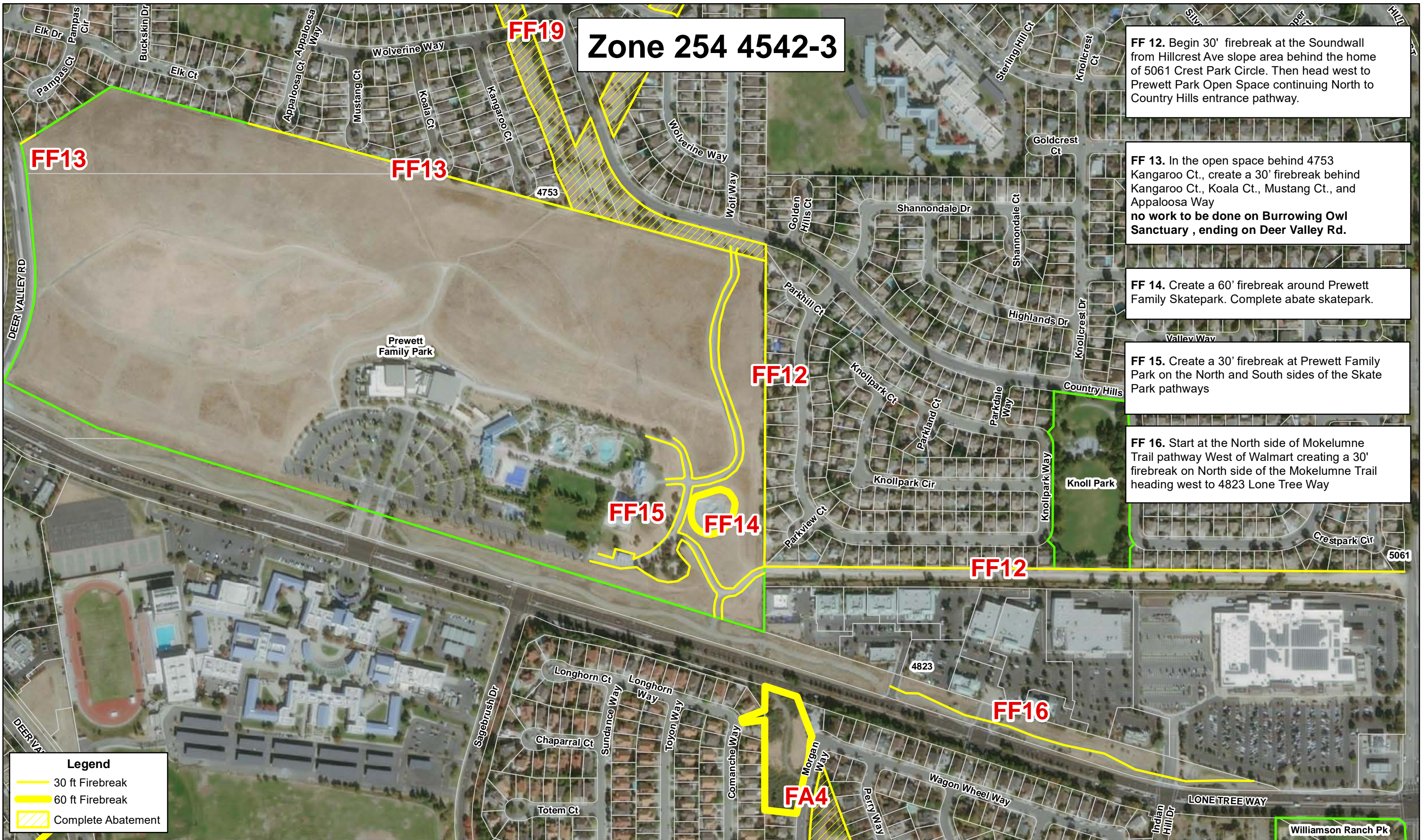
**Legend**

- 30 ft Firebreak
- 60 ft Firebreak
- Complete Abatement

0 275 550 Feet







# Zone 254 4542-3

**FF 12.** Begin 30' firebreak at the Soundwall from Hillcrest Ave slope area behind the home of 5061 Crest Park Circle. Then head west to Prewett Park Open Space continuing North to Country Hills entrance pathway.

**FF 13.** In the open space behind 4753 Kangaroo Ct., create a 30' firebreak behind Kangaroo Ct., Koala Ct., Mustang Ct., and Appaloosa Way  
**no work to be done on Burrowing Owl Sanctuary , ending on Deer Valley Rd.**

**FF 14.** Create a 60' firebreak around Prewett Family Skatepark. Complete abate skatepark.

**FF 15.** Create a 30' firebreak at Prewett Family Park on the North and South sides of the Skate Park pathways

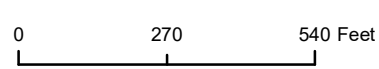
**FF 16.** Start at the North side of Mokelumne Trail pathway West of Walmart creating a 30' firebreak on North side of the Mokelumne Trail heading west to 4823 Lone Tree Way

**Legend**

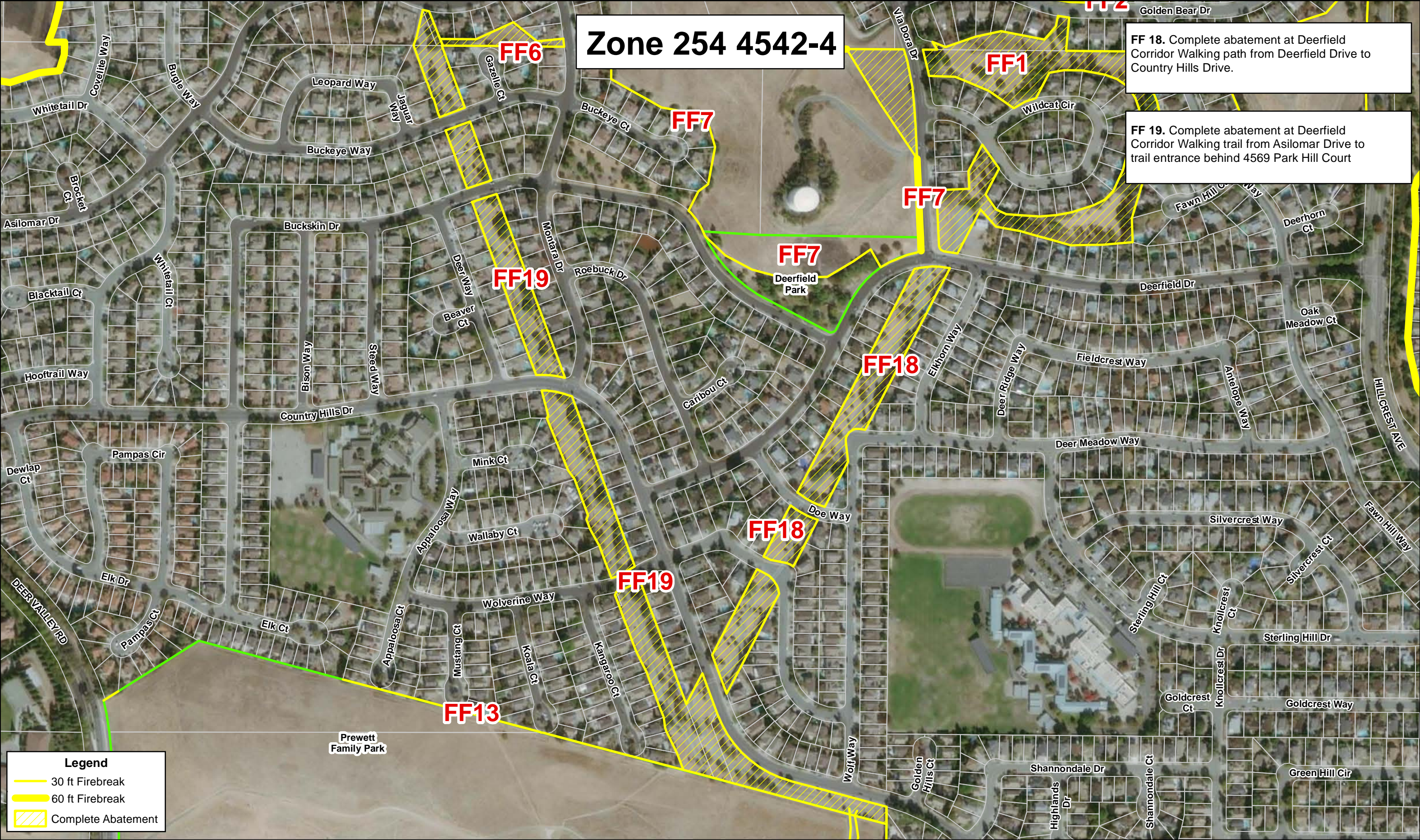
30 ft Firebreak

60 ft Firebreak

Complete Abatement







# Zone 254 4542-4

**FF 18.** Complete abatement at Deerfield Corridor Walking path from Deerfield Drive to Country Hills Drive.

**FF 19.** Complete abatement at Deerfield Corridor Walking trail from Asilomar Drive to trail entrance behind 4569 Park Hill Court

**Legend**

30 ft Firebreak

60 ft Firebreak

Complete Abatement



# Zone 254 4544-1

**FG1**

**FG1**

**FG4**

**FG3**

**FG 1.** Beginning at Hidden Glen and Hillcrest Ave create a 60' firebreak heading south behind homes on Braemar St. to 5017 Kushner Way.

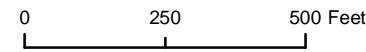
Continue behind Kushner Way heading toward Spur Way and ending behind 5048 Canada Hills Way.

**FG 3.** Start behind Filly Ct create a 30' firebreak continuing behind Colt Ct heading west behind homes along Carriage Way. Then, continue South behind homes along Woodbridge Way to end of Rodeo Ct., then east along houses behind Winterglen Ct to Trail entrance at 4700 Vista Grande Drive, then back to Filly Ct.

**FG 4.** Start behind 4717 Shetland Ct create 60' firebreak continuing behind Palomino Way to Laurel Rd

**Legend**

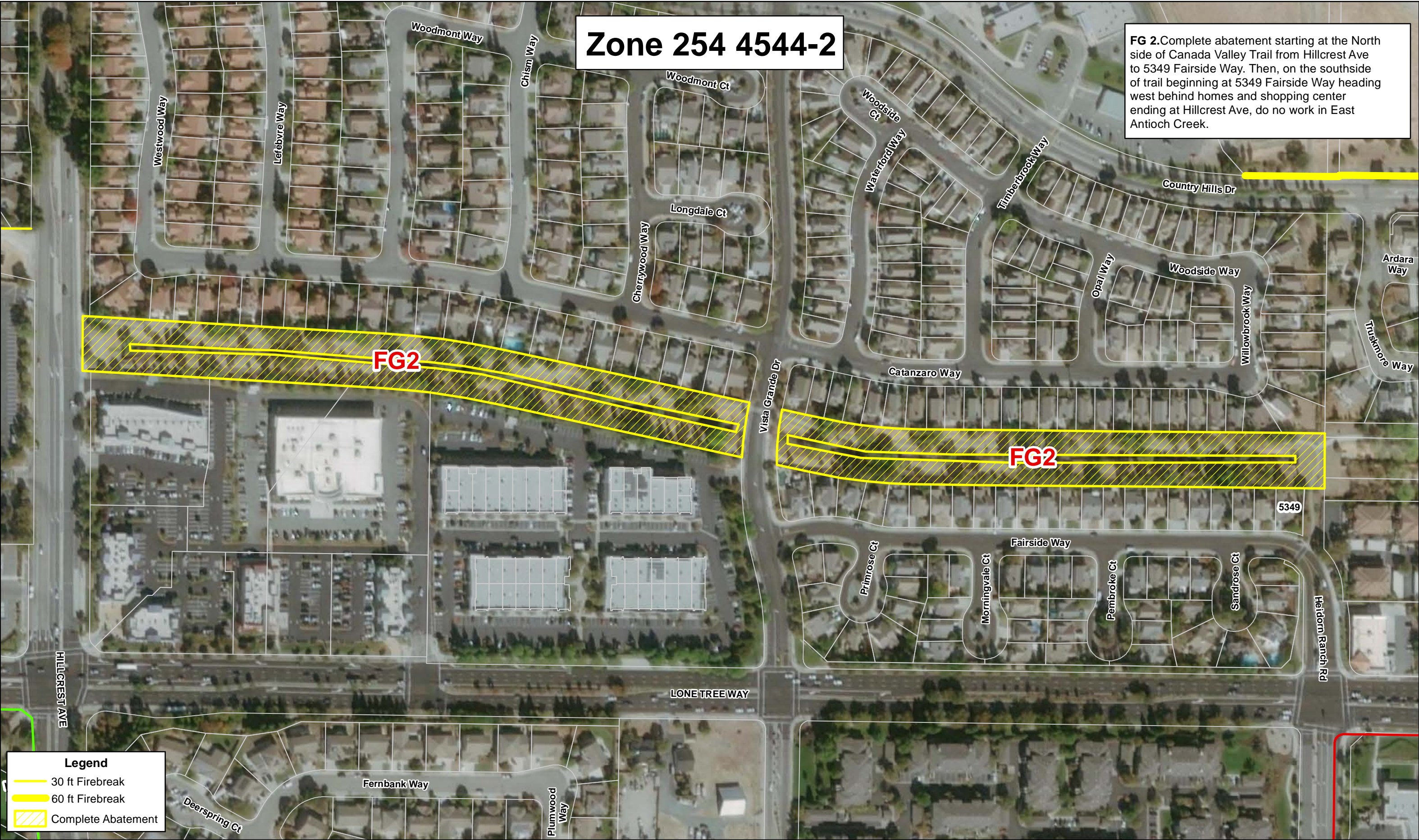
- 30 ft Firebreak
- 60 ft Firebreak
- Complete Abatement





# Zone 254 4544-2

**FG 2.**Complete abatement starting at the North side of Canada Valley Trail from Hillcrest Ave to 5349 Fairside Way. Then, on the southside of trail beginning at 5349 Fairside Way heading west behind homes and shopping center ending at Hillcrest Ave, do no work in East Antioch Creek.



**Legend**

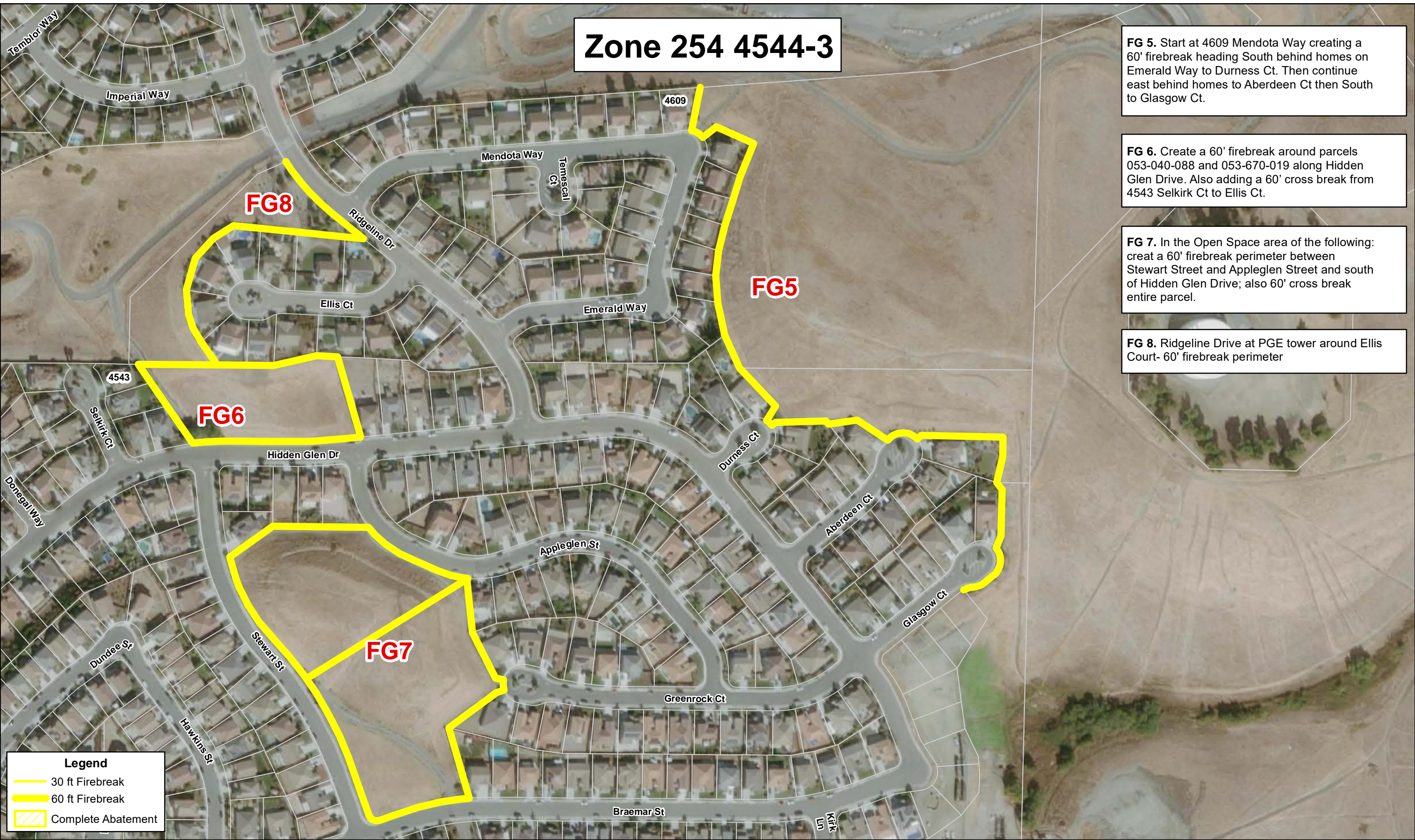
- 30 ft Firebreak
- 60 ft Firebreak
- Complete Abatement

0 250 500 Feet





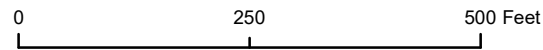
# Zone 254 4544-3



- FG 5.** Start at 4609 Mendota Way creating a 60' firebreak heading South behind homes on Emerald Way to Durness Ct. Then continue east behind homes to Aberdeen Ct then South to Glasgow Ct.
- FG 6.** Create a 60' firebreak around parcels 053-040-088 and 053-670-019 along Hidden Glen Drive. Also adding a 60' cross break from 4543 Selkirk Ct to Ellis Ct.
- FG 7.** In the Open Space area of the following: creat a 60' firebreak perimeter between Stewart Street and Appleglen Street and south of Hidden Glen Drive; also 60' cross break entire parcel.
- FG 8.** Ridgeline Drive at PGE tower around Ellis Court- 60' firebreak perimeter

**Legend**

- 30 ft Firebreak
- 60 ft Firebreak
- Complete Abatement





# Zone 255 4551

**FH 1.** Complete abatement- enter at Melon Ct by Markley Creek path, north to mobile home park then behind houses on Cathy Ct and Jennifer Ct to locked gate near Buchanan Rd.  
**\*\*Do no work in Markley Creek\*\***



**Legend**

- 30 ft Firebreak
- 60 ft Firebreak
- Complete Abatement

0 150 300 Feet





# Zone 256 4563

**FI 1.** In the lot next to 500 Gary on the corner of Cavallo Rd and Gary Ave; complete abatement.

**FI 2.** 30' firebreak behind 1800 to 1816 Trembath Street.

**FI 3.** 30' firebreak behind houses on Candace Ct and Geyser Ct, continuing behind 1701 Yellowstone Dr to 1737 Yellowstone Dr.

**FI 4.** Create a 60' Firebreak on the East side of the Hillcrest Retention Basin from 18th St, behind Hargrove Ct, Sandy Ct, and Sandy Wy to 1525 Hillcrest Ave, continuing South along Hillcrest Ave to Plymouth Ln.

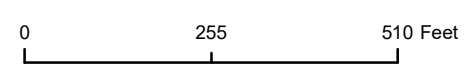
**FI 5.** Create a 60' Firebreak on the West side of the Hillcrest Retention Basin from 18th St to Hillcrest Ave.

**FI 6.** Behind 122 Southlake Dr West of Hillcrest Ave to 18th St; complete abatement.



**Legend**

- 30 ft Firebreak
- 60 ft Firebreak
- Complete Abatement





# Zone 256 4564

**FJ 1.** Complete abatement behind houses from 142 Hyde Place to end.

**FJ 2.** Create 60' firebreak from #2 Danridge Ct. east along property line, to Sunset Ln., then head south and west to #5 to Felicia Ct.

**FJ 3.** Create 30' firebreak, fence lines on both sides of PGE right-of-way parallel to Mountaire Dr from Harbour Park, crossing Garrow Dr and Tahoe Ct, continuing to Mountaire Park; also 30' firebreak both of the other sides of the PGE right of way behind houses on Christina Ct and next to houses on Garrow Dr and Elmo Rd ending at Mountaire Park.

**FJ 4.** Create a 60' firebreak starting behind 1012 Eastbourne Ct. heading west to 1008 Burwood Way



**Legend**

- 30 ft Firebreak
- 60 ft Firebreak
- Complete Abatement

0 250 500 Feet









# Zone 256 4566

FL 1. Complete abatement of Putnam Power Towers south to Contra Costa Canal property, between Polk Ct and Taft Ct.



**Legend**

- 30 ft Firebreak
- 60 ft Firebreak
- Complete Abatement



# Zone 256 4568

**FM 1.** Complete abatement of hillside and fence line from 2205 to 2080 Reseda Way

**FM 2.** Complete abatement of PGE trail from Silverado Dr at Quesada Ct to Warbler Dr

**FM 3.** Complete abatement alongside and behind 2331 Grimsby Court, to East Bay Regional Parks trail entrance.

**FM 4.** Create 60' firebreak starting behind 3901 Osprey Drive to behind 3833 Osprey Drive.

Abate Entire Parcel at Seeno Property at 2417 Cambridge Drive

**FM 5.** Create 60' firebreak starting at 3992 Finch Drive and continuing North behind homes to 3912 Finch Drive.

Then, complete abatement heading East to 2509 Cambridge Drive.

Create a 60' firebreak starting behind 3908 Finch Drive and ending at 2539 Cambridge Drive.

**FM 6.** Create 60' firebreak starting behind 3693 Mallard Ct. heading North behind homes on Mallard Way ending at 3598 Mallard Way.

**FM6**

**FM2**

**FM1**

**FQ1**

**FM5**

**FM5**

**FM4**

**FM4**

**FM3**

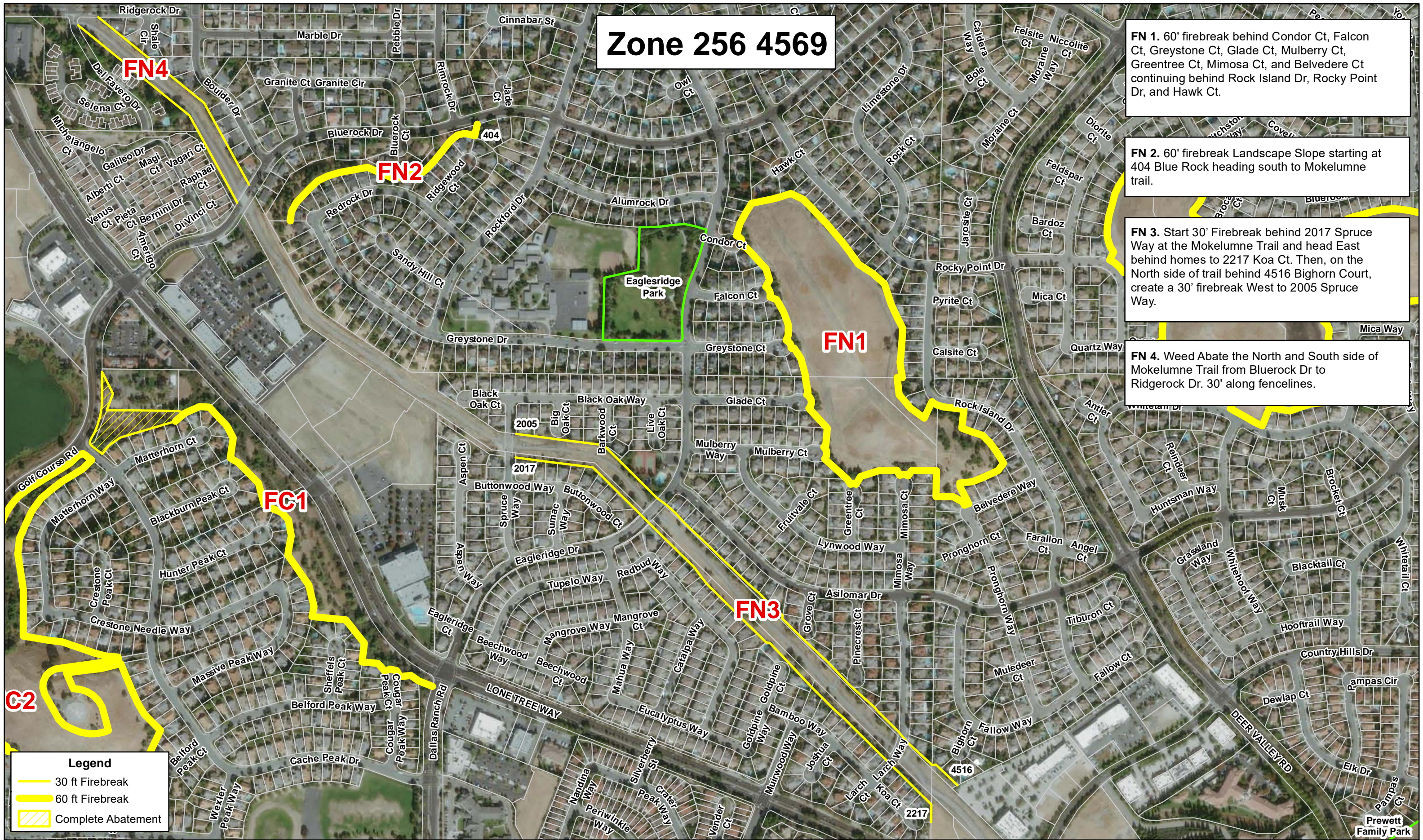
## Legend

- 30 ft Firebreak
- 60 ft Firebreak
- Complete Abatement

0 500 1,000 Feet



# Zone 256 4569



**FN 1.** 60' firebreak behind Condor Ct, Falcon Ct, Greystone Ct, Glade Ct, Mulberry Ct, Greentree Ct, Mimosa Ct, and Belvedere Ct continuing behind Rock Island Dr, Rocky Point Dr, and Hawk Ct.

**FN 2.** 60' firebreak Landscape Slope starting at 404 Blue Rock heading south to Mokelumne trail.

**FN 3.** Start 30' Firebreak behind 2017 Spruce Way at the Mokelumne Trail and head East behind homes to 2217 Koa Ct. Then, on the North side of trail behind 4516 Bighorn Court, create a 30' firebreak West to 2005 Spruce Way.

**FN 4.** Weed Abate the North and South side of Mokelumne Trail from Bluerock Dr to Ridgerock Dr. 30' along fencelines.

**Legend**

30 ft Firebreak

60 ft Firebreak

Complete Abatement



# Zone 256 4572



**FO 1.** Create 60' firebreak starting behind 4011 Moller Ranch Way heading North along houses to Markley Creek Park

**FO 2.** Create 60' firebreak starting behind 3529 Markley Creek Drive heading South to 3729 Markley Creek Drive

**FO 3.** Complete abatement at Open Space entrance at Summit Way by Heaton Ct., head West to James Donlon Blvd.

**FO 4.** Create 60' firebreak starting behind 4076 Barn Hollow Way heading South to 4092 Barn Hollow Way

**FO 5.** Create 60' firebreak, tractor mowing and string trimmers only, Somersville Drive at James Donlon Blvd., East side 2 parcels split by James Donlon Blvd. APN # 076-021-015 and APN # 076-021-014, cross breaks needed on northeast parcel only. This includes complete abatement of trail area near Somersville to James Donlon Blvd.

**FO 6.** Complete abatement of slope from Barn Hollow Way to Westridge

## Legend

- 30 ft Firebreak
- 60 ft Firebreak
- Complete Abatement

0 250 500 Feet

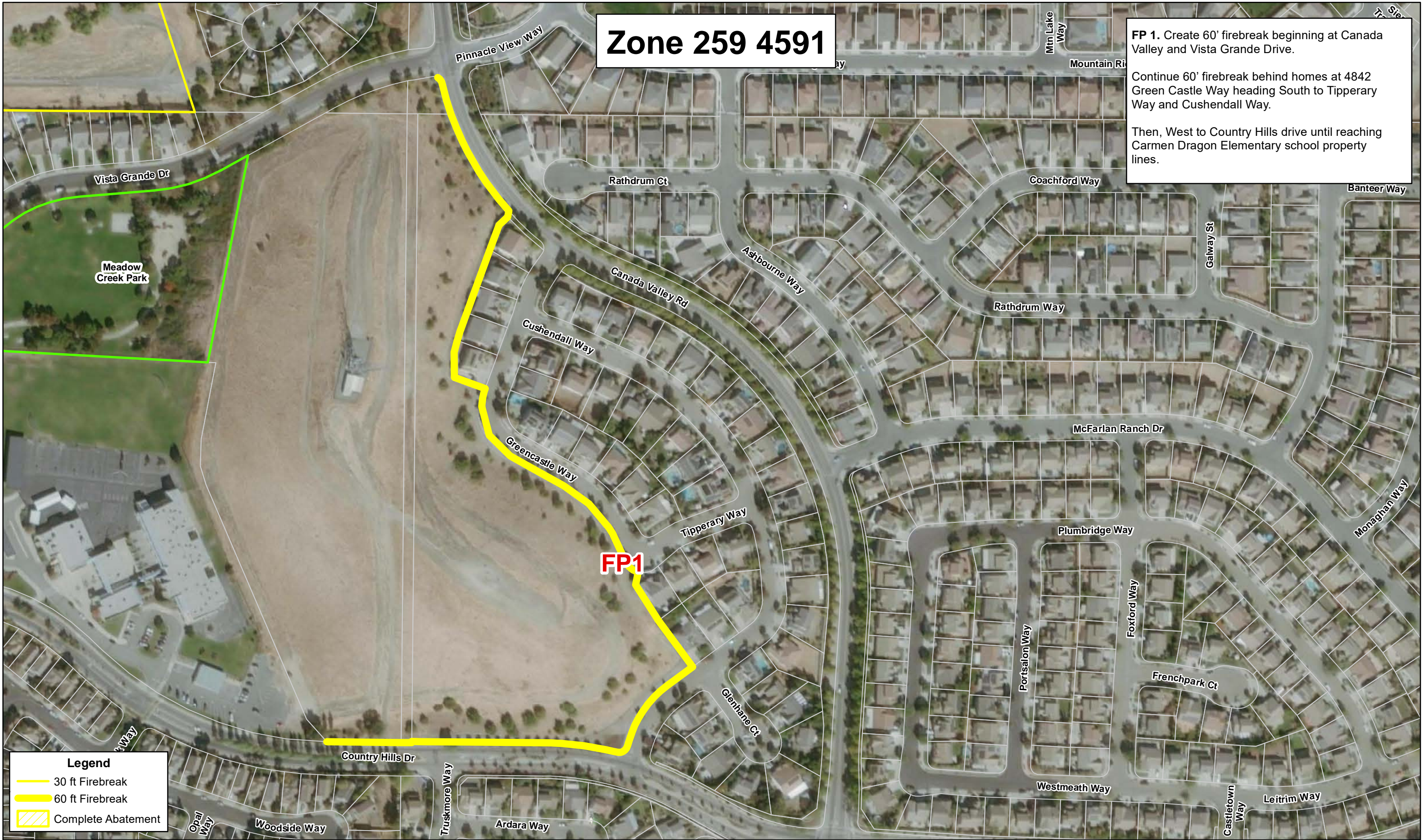


# Zone 259 4591

**FP 1.** Create 60' firebreak beginning at Canada Valley and Vista Grande Drive.

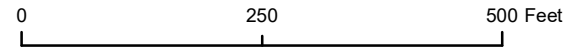
Continue 60' firebreak behind homes at 4842 Green Castle Way heading South to Tipperary Way and Cushendall Way.

Then, West to Country Hills drive until reaching Carmen Dragon Elementary school property lines.



**Legend**

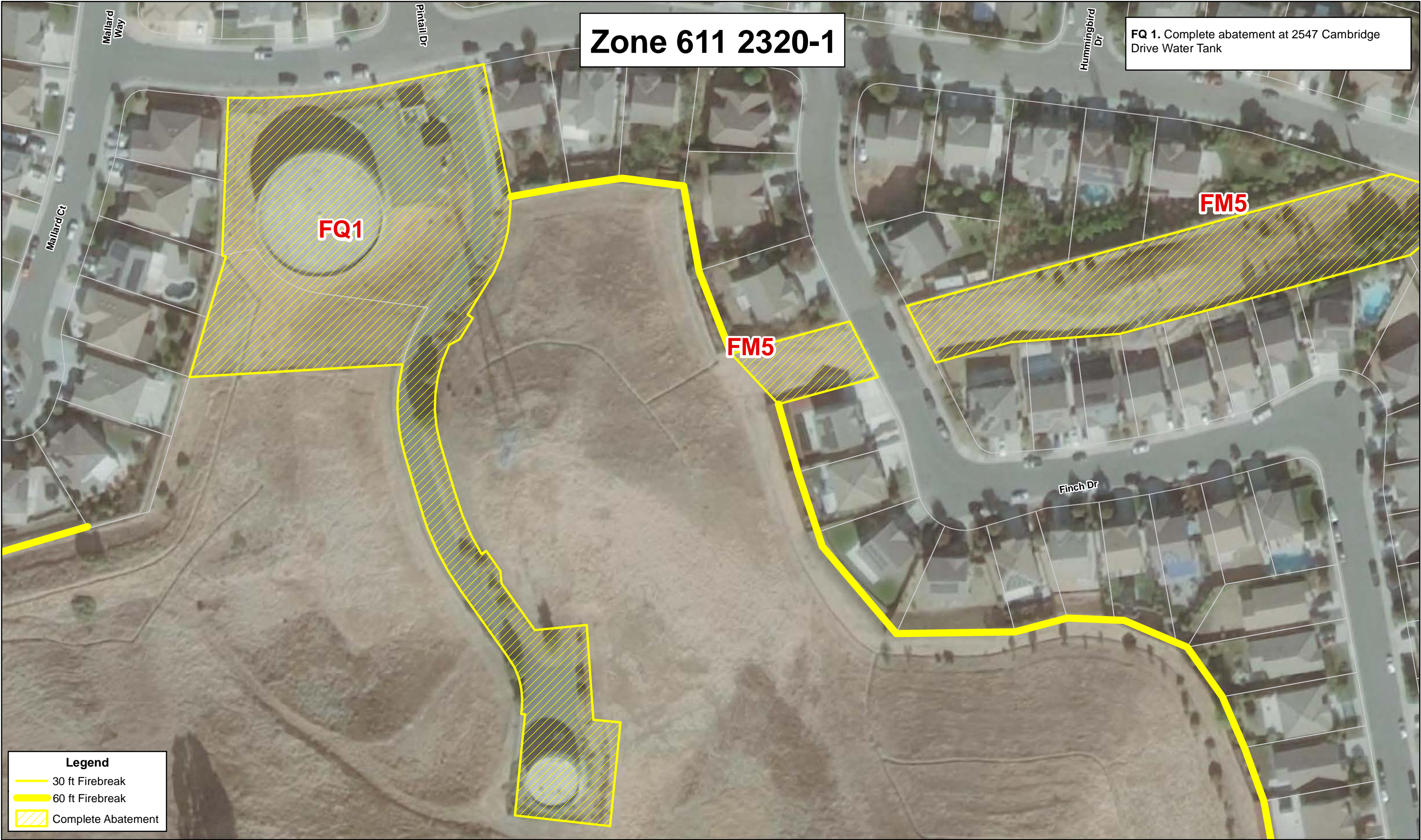
- 30 ft Firebreak
- 60 ft Firebreak
- Complete Abatement





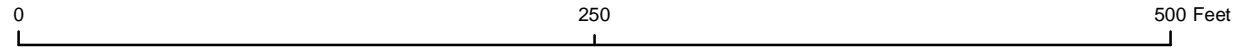
# Zone 611 2320-1

FQ 1. Complete abatement at 2547 Cambridge Drive Water Tank



**Legend**

- 30 ft Firebreak
- 60 ft Firebreak
- Complete Abatement





# Zone 611 2320-2

**FQ2**

**FQ3**

**FQ3**

**FQ4**

**FJ1**

**FQ 2.** Complete abatement water treatment holding pond access off of Whitehaven Ct. Next to 810 and off of Spartan Way.

**FQ 3.** Start at Water Treatment Plant behind 3233 View Dr, head West create 60' firebreak until reaching G St.

Continue 60' firebreak behind 829 Gloucester St. to 801 Gloucester St. then head north along property lines to fence behind Bourton Ct. then east along fence then south back to WTP.

**FQ 4.** Obtain access from the back gate at the Water Treatment Plant (401 Putnam Dr), and starting behind #2 to #30 Terranova Drive 60' firebreak, head North along WTP fence and along 3200 Lone Tree Way office building continuing West to WTP entrance gate.

Head South from WTP Main Gate, do 60' Firebreak back to WTP rear gate.

**Legend**

- 30 ft Firebreak
- 60 ft Firebreak
- Complete Abatement




# Zone 1002 2196-2

FR 1. Complete abatement of parcel parallel to Contra Loma Estates Park.



**Legend**

 Complete Abatement

0 75 150 Feet





# Zone 100 2196-1

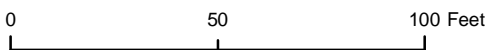
FR 2. The Northeast corner is paved, perform complete abatement at Northwest corner.

FR2

DELTA FAIR BLVD

Legend

Complete Abatement



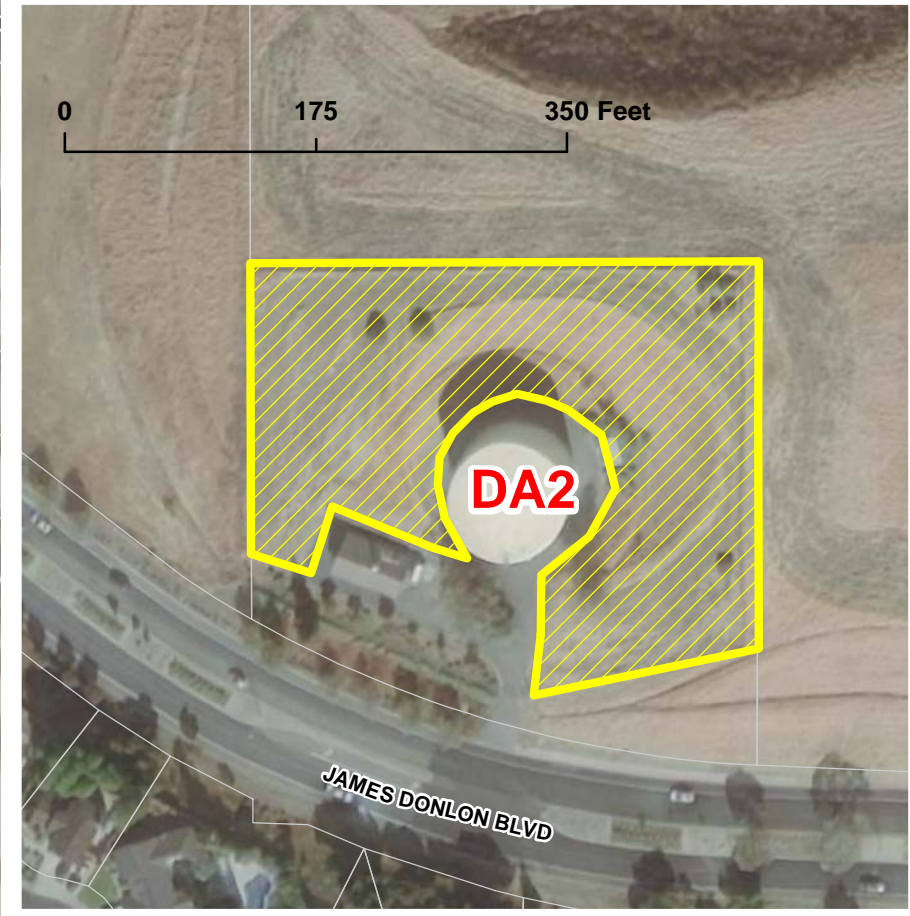
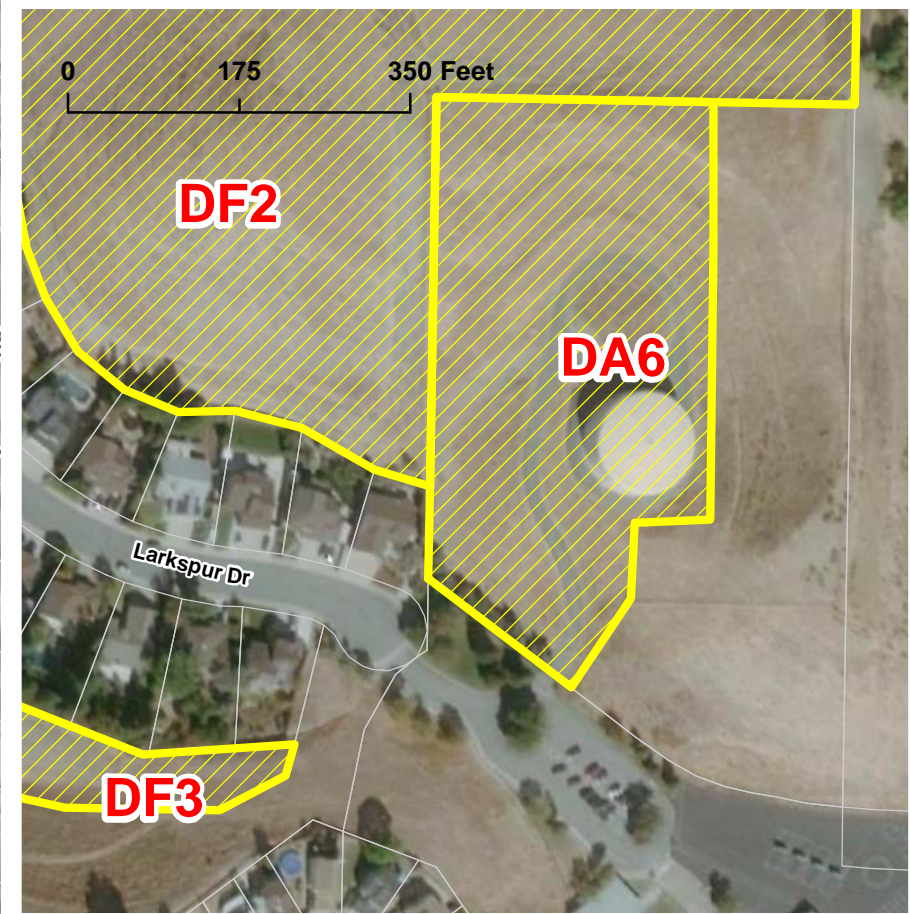


# Zone 611 2320-2


**DA 1.** Disk area surrounding Deerfield water tank on Via Dora Drive across from 4505 Via Dora Drive inside fence lines and area in back of tank. Note: watch out for sprinklers at edges of landscape.

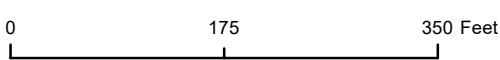
**DA 2.** Disk area surrounding James Donlon water tank, inside fence lines and add handwork around tank circumference where tractor can't access.

**DA 6.** Complete abatement Larkspur water tank inside fence lines and around Larkspur water tank hill.



**Legend**

 Complete Abatement





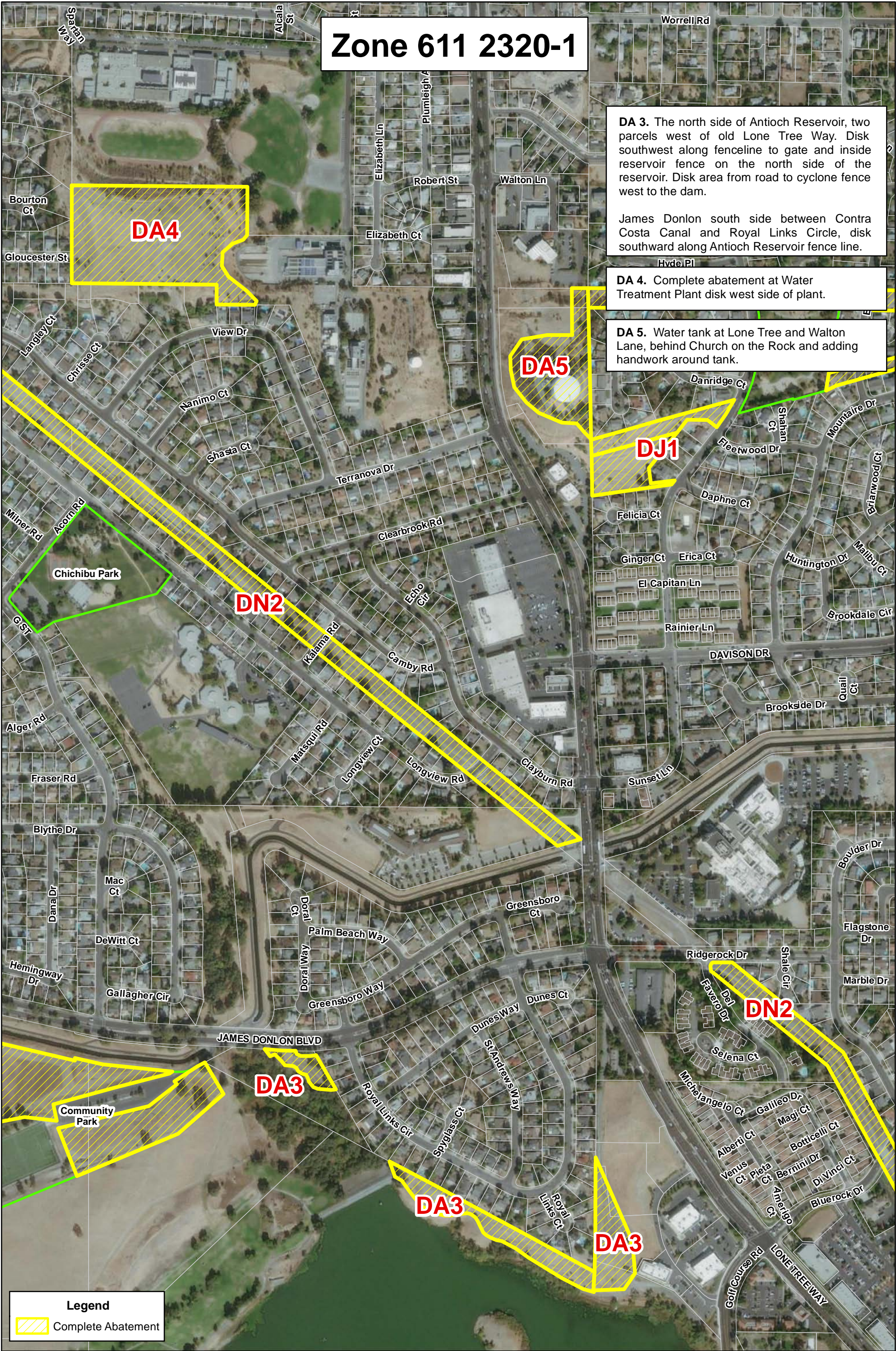
# Zone 611 2320-1

**DA 3.** The north side of Antioch Reservoir, two parcels west of old Lone Tree Way. Disk southwest along fenceline to gate and inside reservoir fence on the north side of the reservoir. Disk area from road to cyclone fence west to the dam.

James Donlon south side between Contra Costa Canal and Royal Links Circle, disk southward along Antioch Reservoir fence line.

**DA 4.** Complete abatement at Water Treatment Plant disk west side of plant.

**DA 5.** Water tank at Lone Tree and Walton Lane, behind Church on the Rock and adding handwork around tank.



0 500 1,000 Feet

ANTIOCH

City of Antioch GIS  
April 2020

N



# Zone 251 4512

**DB 1.** Complete abatement of Open space area East of Mokelumne Drive, South of Mark Twain Drive and North of Forty Niner Way.

**DB 2.** Open space area West of Mokelumne Drive, South of Badger Pass Way and North of Mount Conness Way to Mount Conness Court: Disk along back of houses and trail area. Split hillside and disk along trail.

**DB2**

**DB1**

Diablo West Park

## Legend

 Complete Abatement

0 250 500 Feet





# Zone 251 4513

**DC 1.** Open space area East of Hansen Park, South of Nortonville Way and North of Heacock Way: Disk along landscaping, splitting hills as required for 5 acre parcels.

**DC 2.** Disk Open space area West and North of Hansen Drive, east of Judsonville Drive and south of Union Mine Drive, splitting hills as required for 5 acre parcels.

**DC 3.** Open space area South of Judsonville Drive, from Empire Mine Road to 5281 Judsonville Drive: Disk behind houses and along fence lines, splitting hills as required for 5 acre parcels.


**DC 4.** Open space area West of Dallas Ranch Road, North and East of Dallas Ranch Park to Mesa Ridge Drive: Disk along houses and pathways, splitting hills as required for 5 acre parcels.

**DC2**

**DC1**

**DC4**

**DC3**

**Legend**  
 Complete Abatement

0 500 1,000 Feet





# Zone 254 4541

**DD 1.** PGE Power lines run North and South between Larkspur and Wildflower. The tower is on North side of Lotus Court. Go South along PGE right of way and around the back of houses only on Lotus Court. South of hill on hillcrest side toward Lobelia Court and South towards and around 2908 Wildflower. Do not continue power line South across Wildflower to Hillcrest.

**DD 2.** Disk Open space area behind 3029 Larkspur Drive along house fence lines North toward Bluebonnet Court and East to Bluecurl Court.

Continue Disking at entrance on Bluecurl Ct. then South along water tank fence line heading East along Mead St. Splitting hills as required for 5 acre parcels.

**DD 3.** Disk Easement across from 3008 Bellflower Drive, behind houses to 3024 Larkspur Drive.

**DD 4.** Disk Open space South of Baywood Circle and North of Hillcrest Ave. Splitting hills as required for 5 acre parcels.

**DD 5.** Disk in back of houses along Ferngrove Way, then south behind Crestline Ct., Vista Hills Ct. Hidden Hills Court then around to Bellflower Drive. Splitting hills as required.

**DD 6.** Disk Open space area East of Bluebell Circle, North of Folsom Drive and South to Donner Ct.

**DD 7.** Disk open space area North of Meadow Lake Street including abutting property by Monterra Subdivision. Splitting hills as required by CCCFPD mandates. Avoid storm run-off area.

**DD1**

**DD2**

**DA6**

**DD3**

**DD5**

**DD4**

**DD6**

**DD7**

## Legend

 Complete Abatement

Country Manor Park

Nelson Ranch Park

0 500 1,000 Feet





# Zone 254 4542

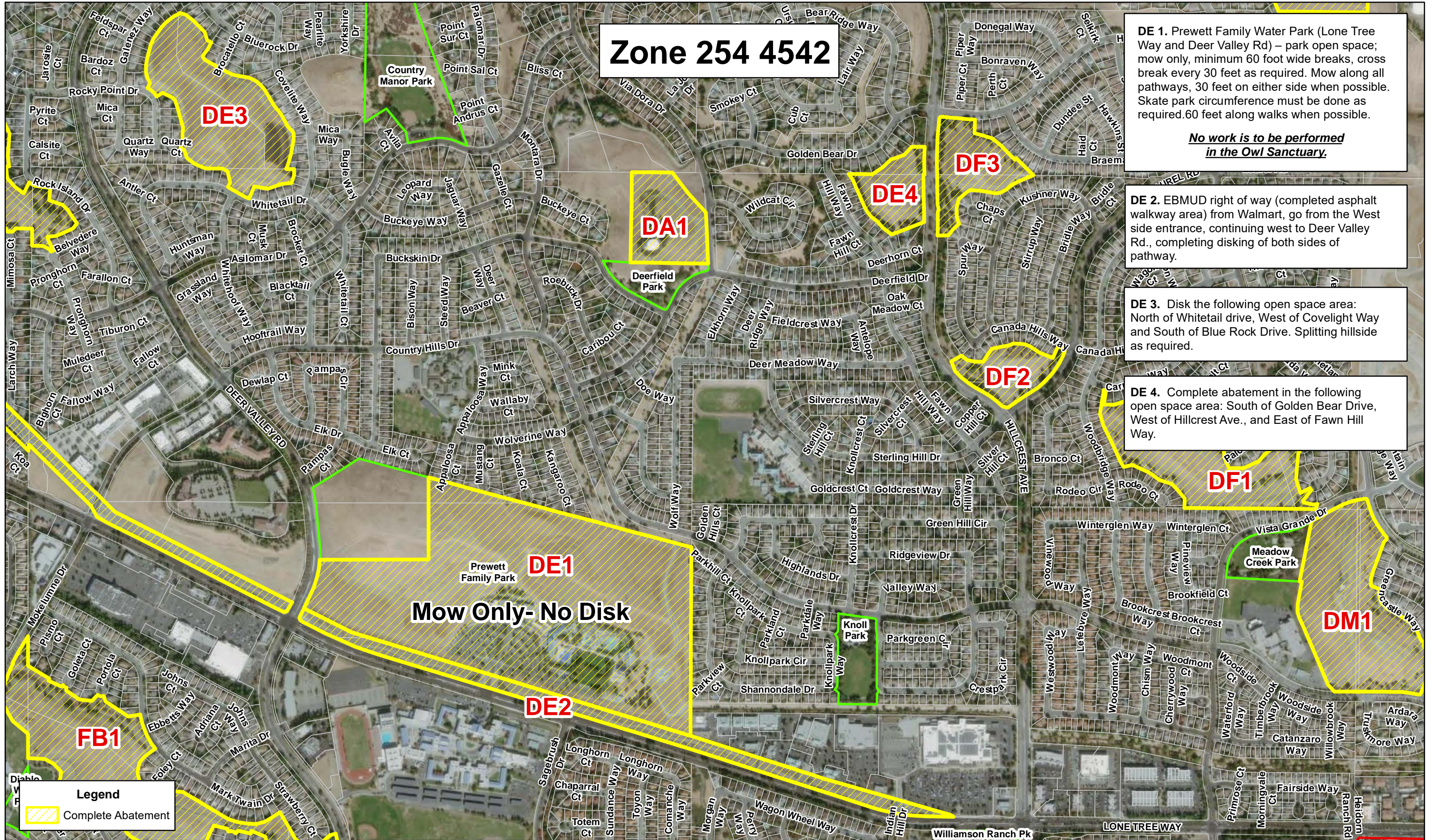
**DE 1.** Prewett Family Water Park (Lone Tree Way and Deer Valley Rd) – park open space; mow only, minimum 60 foot wide breaks, cross break every 30 feet as required. Mow along all pathways, 30 feet on either side when possible. Skate park circumference must be done as required.60 feet along walks when possible.

**No work is to be performed in the Owl Sanctuary.**


**DE 2.** EBMUD right of way (completed asphalt walkway area) from Walmart, go from the West side entrance, continuing west to Deer Valley Rd., completing diskling of both sides of pathway.

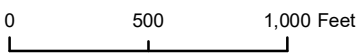
**DE 3.** Disk the following open space area: North of Whitetail drive, West of Covelight Way and South of Blue Rock Drive. Splitting hillside as required.

**DE 4.** Complete abatement in the following open space area: South of Golden Bear Drive, West of Hillcrest Ave., and East of Fawn Hill Way.



**Legend**

 Complete Abatement





# Zone 254 4544

**DM 1.** Disk perimeters and hillside as required of the following open space area:

East of Meadow Creek Park/Carmen Dragon Elementary

West of Canada Valley Rd.

**DF 1.** In the Open space area of the following: North of Vista Grande Drive, West of Steeplechase, Palomino and Colt Courts; Disk along houses and pathways as required, splitting hillside.

**DF 2.** Disk the Open space area of the following:

North of Laurel Rd.

East of Hillcrest Ave

South of Canada Hills Way

**DF 3.** Disk the Open space area of the following (Cross breaks and split hill as required):

Southeast corner of Hillcrest at Hidden Glen East to Braemar St.

South to homes along Spur Way and Chaps Ct.

**DF 4.** Disk APN 053-040-086 Mendota Way Trail South of CCWD Corp Yard to 4629 Durness Court then East to CCWD Water Tanks.



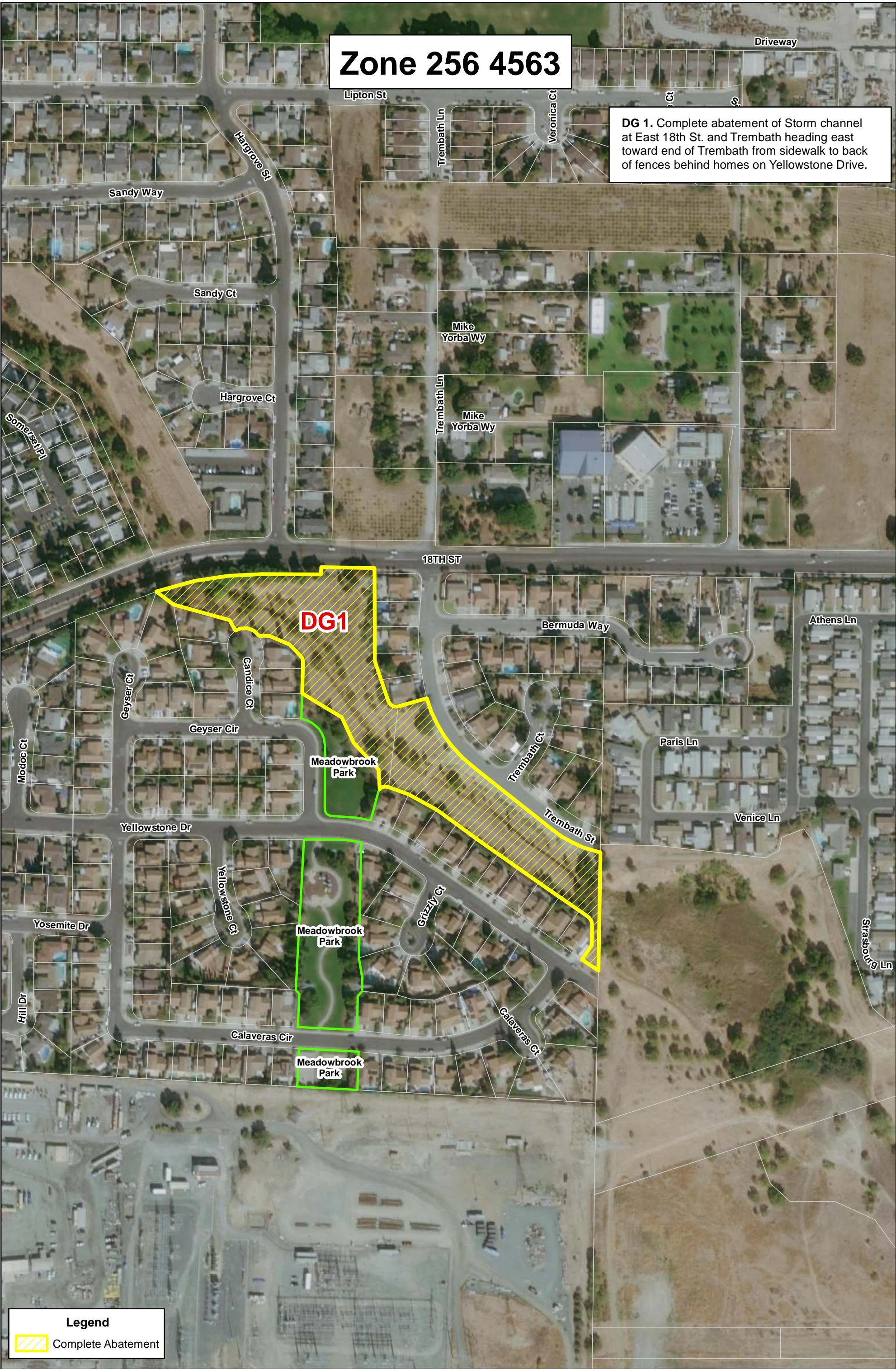
**Legend**

Complete Abatement



# Zone 256 4563

**DG 1.** Complete abatement of Storm channel at East 18th St. and Trembath heading east toward end of Trembath from sidewalk to back of fences behind homes on Yellowstone Drive.





# Zone 256 4564

**DH 1.** Complete abatement of PGE power line right of way on Sunset Lane across from Mountaire Park. Continue to disk west to water tank.

**DH 2.** Disk parcel behind homes on Felicia Ct, South to Cement V-ditch.

**DH 3.** PGE right of way, power lines on Elmo Rd. between Mountaire Drive and Greenridge Ct. Disk East towards Harbour Park at Ashurton Dr.


**DH 4.** PGE right of way power lines on Elmo Rd. between Greenridge Ct. and Hillside Rd. Disk East to Garrow Drive; continue East until power lines row joins together.

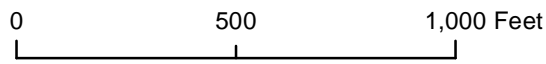
**DH 5.** Disk Lynn Avenue North to power line towers South of Shaddick Drive.

**DH 6.** Corner of Harris Drive and Shaddick Drive: disk under power lines to East Tregallas Rd.

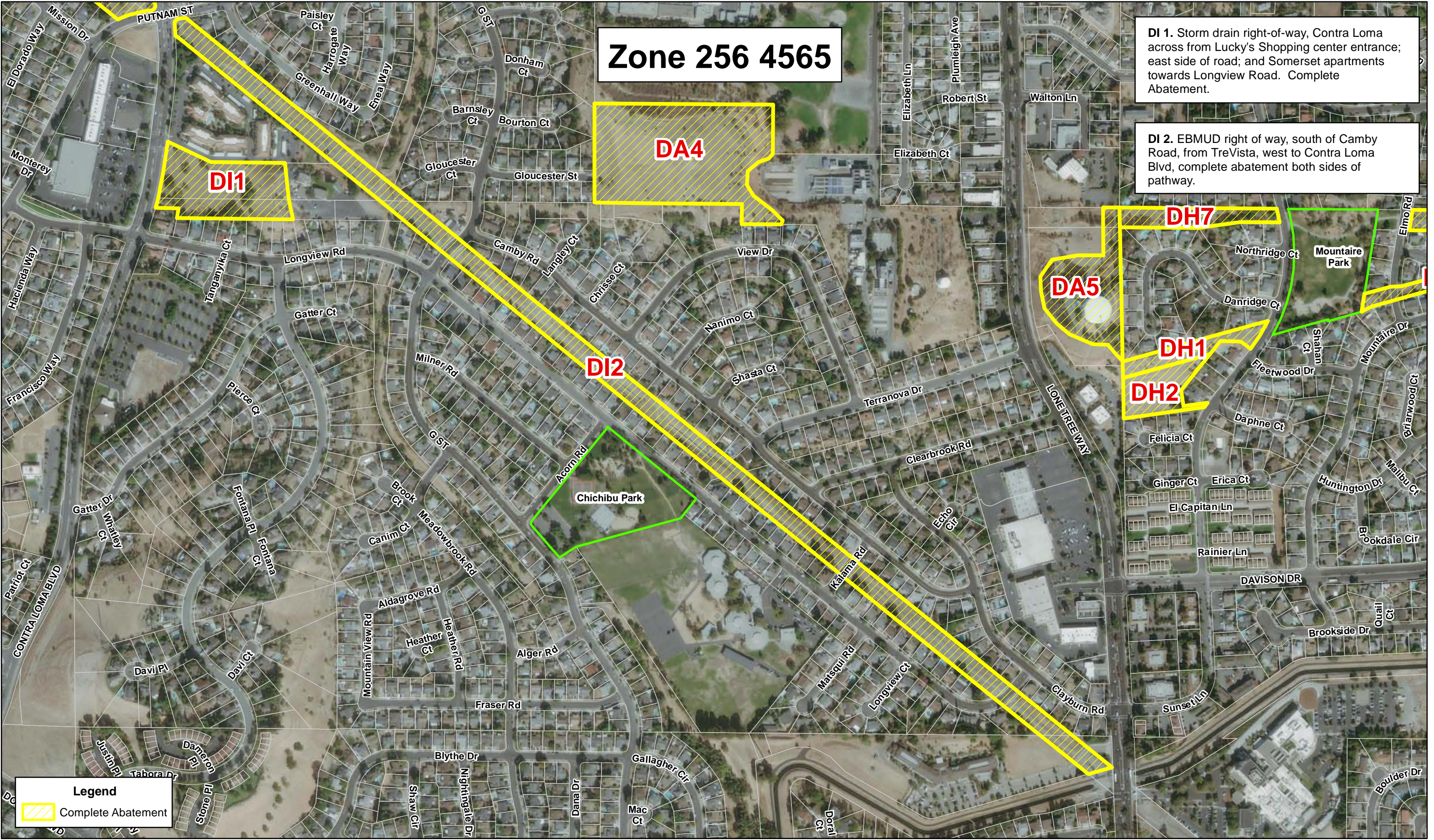
**DH 7.** West of Mountaire Park, North of Northridge and Danridge Cts. Hand work if needed.

**Legend**

 Complete Abatement








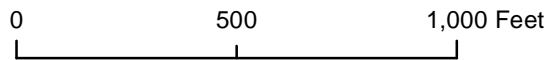
**Zone 256 4565**

**DI 1.** Storm drain right-of-way, Contra Loma across from Lucky's Shopping center entrance; east side of road; and Somerset apartments towards Longview Road. Complete Abatement.

**DI 2.** EBMUD right of way, south of Camby Road, from TreVista, west to Contra Loma Blvd, complete abatement both sides of pathway.

**Legend**

 Complete Abatement




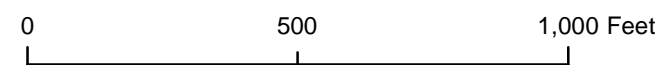


# Zone 256 4566

DJ 1. EBMUD right of way, starts at Contra Loma BLVD/ Putnam Street, continues to Rio Grande Drive, parallel to Mira Vista Court, then to Mission Drive, west of Mission continues to Gentrytown Drive, contiues to Buchanan road, complete abatement.

DJ1

**Legend**  
 Complete Abatement






# Zone 256 4568

DK 1. Open Space area south side of James Donlon, from east side of Community Park, north of soccer fields and parking lot, disk entire parcel.



**Legend**

 Complete Abatement

